

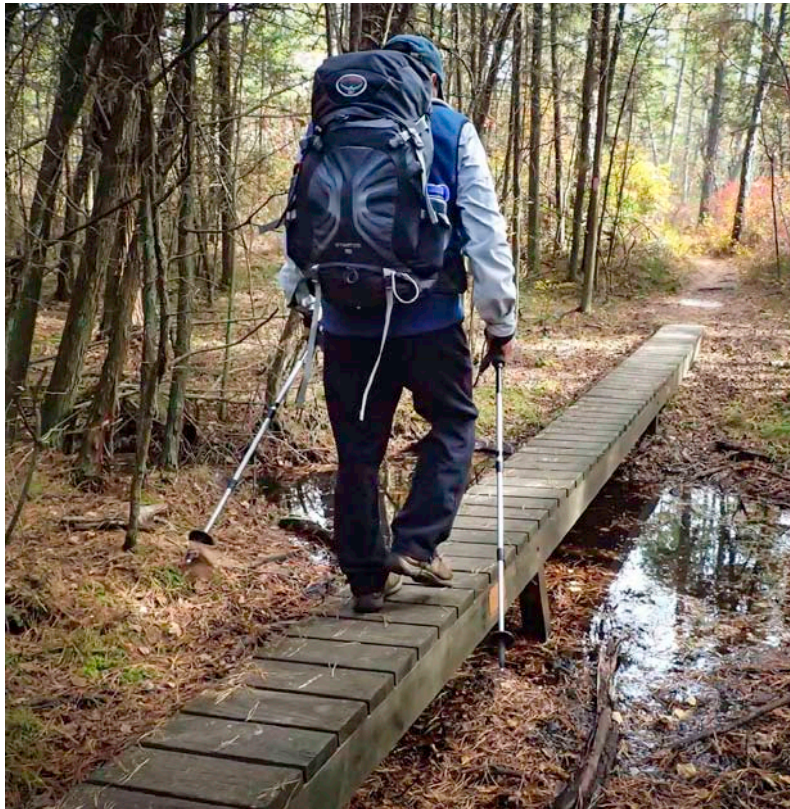


PINELANDS  
PRESERVATION  
ALLIANCE

# STATE OF THE pinelands

AN ANNUAL REPORT BY THE PINELANDS PRESERVATION ALLIANCE  
[WWW.PINELANDSALLIANCE.ORG](http://WWW.PINELANDSALLIANCE.ORG)

2017





# The New Jersey Pinelands

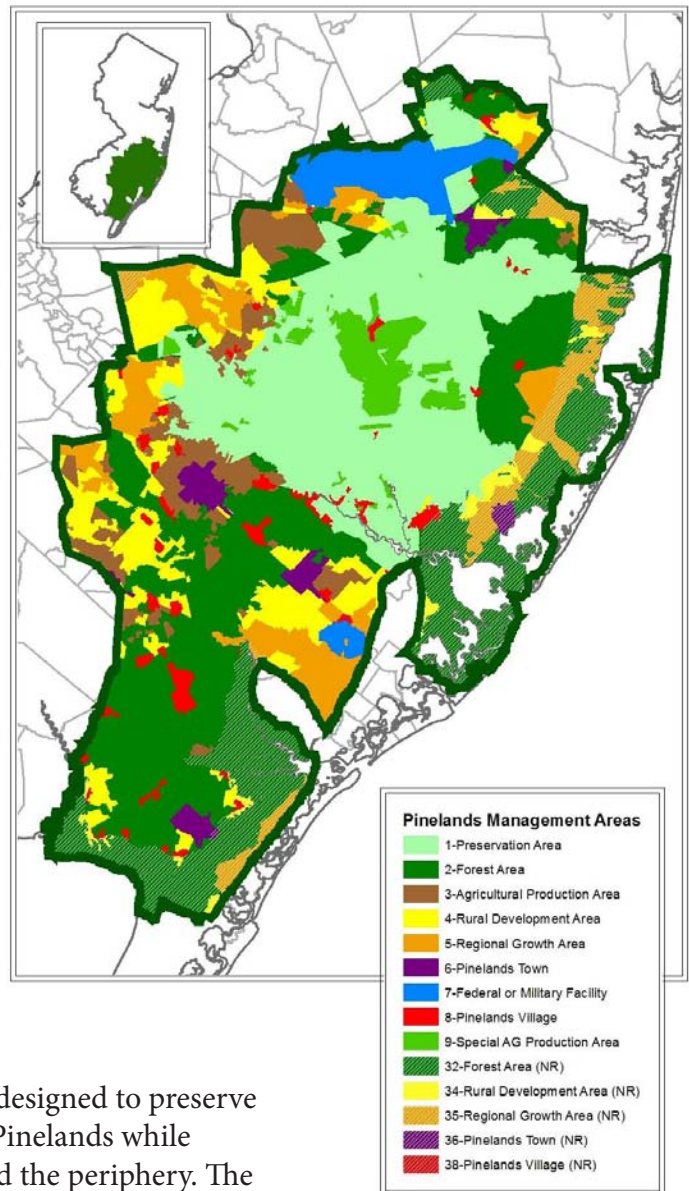
The Pine Barrens is a vast forested area extending across South Jersey's coastal plain. This important region protects the world's largest example of pitch pine barrens on Earth and the globally rare pygmy pine forests. One of the largest fresh water aquifers, the Kirkwood-Cohansey, lies underneath its forests and wetlands. The Pine Barrens is home to many rare species, some of which can now only be found here having been extirpated elsewhere.

During the 1960's construction of the world's largest supersonic jetport and an accompanying city of 250,000 people was proposed for the Pine Barrens. This proposal galvanized citizens, scientists and activists to find a way to permanently protect the Pinelands. In 1978 Congress passed the *National Parks and Recreation Act* which established the Pinelands National Reserve, our country's first. In 1979 New Jersey adopted the Pinelands Protection Act. This Act implemented the federal statute, created the Pinelands Commission, and directed the Commission to adopt a Comprehensive Management Plan (CMP) to manage development throughout the region.

Many residents do not know that all new development is controlled by the nation's most innovative regional land use plan. The CMP is designed to preserve the pristine conditions found within the core of the Pinelands while accommodating human use and some growth around the periphery. The Pinelands Commission's staff of approximately 40 professionals is directed by 15 Commissioners who serve voluntarily. Seven Commissioners are appointed by the Governor with approval of the state Senate, seven by the counties in the Pinelands, and one by the U.S. Secretary of the Interior.

The New Jersey Department of Environmental Protection (DEP) also plays a key role in protecting the Pinelands. In addition to its job of implementing the CMP in the coastal zone, the DEP regulates the distribution of fresh water from the aquifers that lie beneath the Pinelands.

The Pineland Commission and DEP's accomplishments in the Pinelands are remarkable. But this region faces an onslaught of threats in the form of unnecessary pipelines, political interference to benefit development projects, and the failure of state agencies to enforce Pinelands rules on a consistent basis. Through public education and advocacy the Pinelands Preservation Alliance works to protect this great wilderness and give the public a voice in its preservation.



# State of the Pinelands 2017

The Pinelands Preservation Alliance presents this annual report in order to sum up the health of the Pinelands preservation efforts by our federal, state and local government agencies. We seek to provide the public and the agencies themselves with a report card that we can all use to move forward and do better in protecting this unique natural treasure.

This annual review of actions or in-actions of the last 12 months is the most comprehensive account of public policy actions that affect the Pinelands National Reserve.

We applied six criteria in assessing each action –namely, whether each action:

1. upholds the integrity of the Comprehensive Management Plan (CMP);
2. protects native habitats, for plants and wildlife;
3. safeguards the quality of Pinelands aquifers and surface waters;
4. insures the integrity of the water supply for people and the ecosystem;
5. enhances the cultural and historic resources of the area; and
6. advances education about the Pinelands.

Where a government agency followed its rules and took appropriate action we gave the agency a *thumbs up*. In cases where the agency drifted from its regulatory mandate and took an action that, in our opinion, was detrimental we gave the agency a *thumbs down*.



*The Pinelands Preservation Alliance depends on private donations from concerned citizens just like you. You make it possible for us to advocate for the Pinelands each and every day. Thank you for making our work possible!*

## Board of Trustees

Hon. Brendan Byrne,  
*Honorary Chair*  
James Barnshaw, M.D., *Chair*  
Barbara Trought, *Vice Chair*  
Anne E. Heasley, *Treasurer*  
Michael Gallaway, *Secretary*  
Peter C. Adamson, M.D.  
Robert L. Barrett  
Patricia A. Butenis  
Timothy J. Byrne  
Charles M. Caruso  
Charles M. Chapin  
Emile DeVito, Ph.D.  
John Dighton, Ph.D.  
Bill Fisher  
Thomas Harvey  
Albert Horner  
Ron Hutchinson, Ph.D.  
Louis R. Matlack, Ph. D.  
David F. Moore  
Loretta Pickus  
Sarah Puleo  
William A. Rodio  
Jessica Rittler Sanchez, Ph.D.  
Betty Wilson

## Staff Members

Carleton Montgomery,  
*Executive Director*

Richard Bizub  
Thomas Dunn  
Becky Free  
Audra Hardoon  
Jason Howell  
Ryan Rebozo, Ph.D.  
Jaclyn Rhoads, Ph.D.  
Stephen Sebastian  
Katie Smith  
Jane Wiltshire

## Pinelands Adventures

Rob Ferber, *Director*  
Barnes Laucks  
John Volpa

---

---

Dear Friends of the Pinelands,

Phil Murphy will take office as our new governor on January 16, 2018, and I for one am looking forward to a new day for Pinelands preservation.

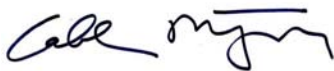
Phil Murphy has not taken a position on the Pinelands pipeline controversies, but he may have to if the appeals court reverses the Pinelands Commission and/or Board of Public Utilities approvals for one or both projects. Just as important, there is a great deal of work to be done on protecting the Kirkwood-Cohansey aquifer from over-pumping, cleaning up toxic chemical plumes in the aquifer, protecting streams and ponds from pollution in runoff from developed areas, taking better care of public lands, and fixing a series of broken procedures to ensure well-founded, open decision making at the Commission. Our experience over the last several years shows that these reforms need the support and leadership of the governor to become reality.

PPA is calling on the new governor to:

- Get the Pinelands Commission back on track. This will take his personal leadership and the support of his Commissioner of the Department of Environmental Protection (DEP). This includes ensuring that all seven governors' appointments to the Commission are people who have relevant expertise and believe in protecting the Pinelands, in the Pinelands Protection Act and in the Comprehensive Management Plan (CMP).
- Use the powers of the governor and the DEP to stop unnecessary, harmful and illegal pipelines in the Pinelands and beyond, including the South Jersey Gas, New Jersey Natural Gas and PennEast proposals. Move the state towards the goal of 100% reliance on renewable energy sources.
- Ask the Commission and DEP to adopt long-awaited reforms to the rules governing pumping of the aquifers. Pinelands Commission staff have worked on these changes for years now, but have not been permitted to advance them to adoption.
- Ask the Commission to reform its rules governing the process and the standards for approval of pipelines and other infrastructure to better protect Pinelands conservation zones. In the gas pipeline cases, we have seen the Commission twist rules in knots to approve projects that clearly violate the terms and the purposes of the CMP through procedures the Commission simply made up for this purpose.
- Direct the new DEP Commissioner to work with the Commission to address key water quality problems that plague many parts of the Kirkwood-Cohansey aquifer and Pinelands surface waters. These include the discovery of wide-spread plumes of perfluorinated compounds within and coming out of the Joint Base, and the damage to native water quality from stormwater in developed areas that is laden with nitrogen and other contaminants.
- Direct the new DEP Commissioner to take strong action to stop illegal off-road vehicle use on public and private lands, and to repair the vast damage that has already been done.
- Direct the new DEP Commissioner to strengthen the rules on "diverting" preserved parkland for non-conservation purposes, as the current rules have proven to have loopholes and omissions that allow local governments to develop public parklands for other, often private commercial, uses.

The public depends on the Pinelands Commission to fulfill its primary mission of protecting the natural and cultural resources of the Pinelands and to ensure that development is only permitted if consistent with that purpose. The Commission has strayed from these ideals and it is time to get back on track.

Best wishes,



Carleton Montgomery  
*Executive Director*





# Issues Spotlight

## Delaware River Watershed Initiative

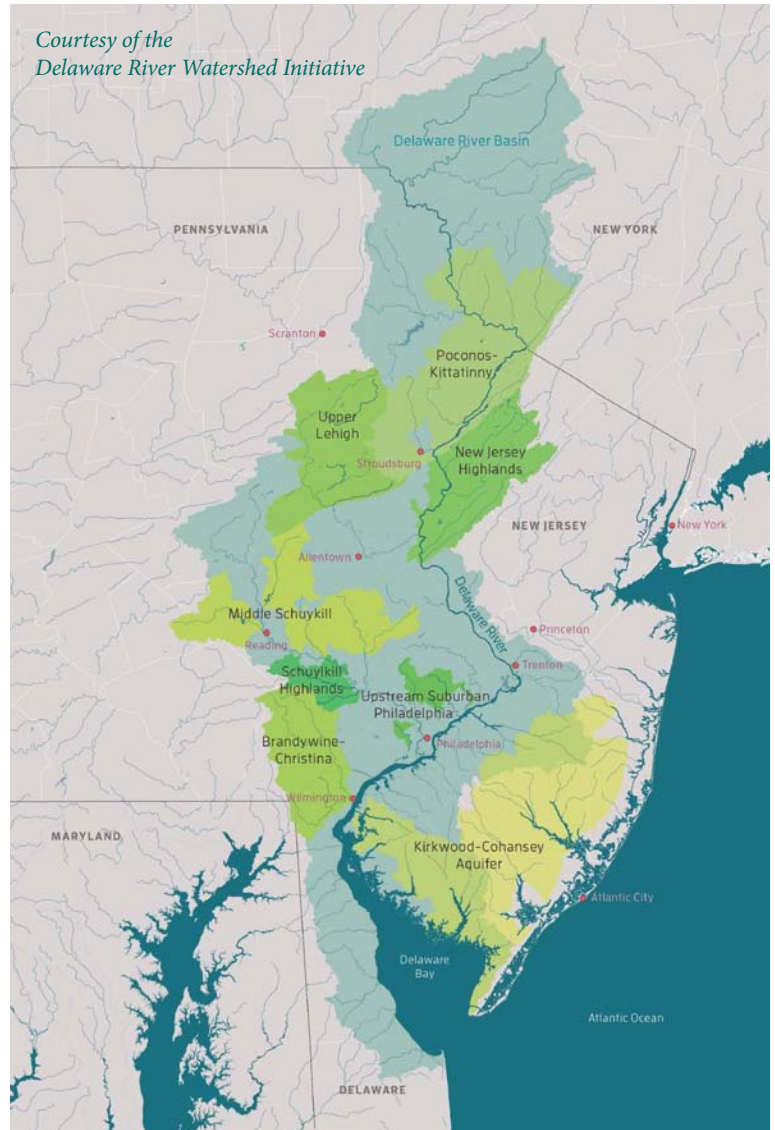
The Delaware River Watershed Initiative (DWRI) is an unprecedented collaboration of more than 50 leading nonprofit organizations including the Pinelands Preservation Alliance throughout the watershed. The goal is to protect and restore water quality in this massive watershed, from the Poconos in Pennsylvania to the Delaware coast. Organizations work collaboratively sharing resources and information, which leads to more effective restoration and land protection efforts in the watershed. (Learn more about the initiative at [www.drwi.net](http://www.drwi.net))

The Kirkwood-Cohansey aquifer, much of which is located in the southern portion of the Delaware River Watershed, supplies virtually all the water in the streams and wetlands of southern New Jersey. It also provides more than 45 billion gallons of water a year to over a million residents, visitors, farms and other businesses. Farmers use the water for irrigation, and the regions' cranberry industry uses vast amounts to maintain its bogs. The aquifer, however, is threatened by systematic over-pumping to serve human demands, and by pollution associated with urban/suburban development and agricultural uses.

This spring, as part of this initiative, PPA commissioned two reports on the Kirkwood-Cohansey (KC) aquifer to improve our current knowledge of the health and functioning of the aquifer. The first, drafted by retired United States Geological Survey (USGS) hydrologist Robert Nicholson focused on the influence of the KC aquifer on the Delaware River and the second drafted by DEP scientist Nicholas Procopio focused on water-quality and quantity data available for the KC aquifer.

Understanding where aquifer monitoring currently exists and making the connection between our ground and surface waters will help to guide future monitoring efforts throughout the Pinelands with a particular emphasis on the Rancocas watershed. This effort aims to produce measurable in-stream improvements to the water quality of the streams and rivers that make up the greater Delaware River watershed.

In the report titled "The Kirkwood-Cohansey Aquifer System: Linkages to the Delaware River", Robert Nicholson identified that approximately 12% of all base flow (1.08 billion gallons per day) to Delaware River tributaries is supplied by the KC aquifer. This contribution from the aquifer to the Delaware River improves the river's water quality because the water coming in from the Kirkwood-Cohansey is cleaner than the water in the Delaware River, which is polluted by



runoff from urbanized areas in the Delaware River watershed. A review of water quality data suggests that the KC aquifer contributes water with lower total dissolved solids, nitrogen, and phosphorous to the Delaware River. This report also highlighted the vulnerability of this aquifer to water quality and quantity stressors. Previous studies show evidence of negative impacts to wetlands with groundwater withdrawals equaling 9% of the water that would normally penetrate back into the aquifer. In total, withdrawals from this aquifer exceed 142 million gallons of water per day. Water quality has been similarly degraded in areas of development. Another key take away from this report is the variability in groundwater flow throughout the aquifer. Understanding the flow paths of groundwater is important for planning restoration projects such as those proposed through the Delaware Watershed Initiative.

Dr. Procopio's report titled "Water-quality and water-quantity summaries and trend analyses for data available in the Kirkwood-Cohansey Cluster Area" highlighted the locations of water quality sampling in the Pinelands as well as the variables that have been measured. While this report highlighted the many water quality sampling locations in the Pinelands, it also identified the limited sample size and inconsistent frequency of sampling that often makes analysis of these data sets difficult particularly if interested in trends over time. Highlighting these gaps and inconsistencies in data collection over such a large region will help to inform how best to use existing data in the characterization of the aquifer as well as how to best inform anticipated data collection through the Delaware River Watershed Initiative.

These reports improve our current knowledge of the KC aquifer, reveal data collection that is required to improve this understanding and highlights current threats to the quality and quantity of water in the aquifer. Over the duration of the Delaware River Watershed Initiative, various groups in south Jersey, including PPA, will identify strategies to address these threats and fill the identified data gaps for the KC aquifer in an attempt to improve water quality and limit impacts from groundwater withdrawals. These two reports will act as the framework for identifying areas suitable for water quality improvements and efforts to promote water conservation.

## Important: Your Action is Needed

### Heritage Minerals

In August, Hovnanian Industries submitted a new application for a Coastal Area Facility Review Act (CAFRA) permit to the New Jersey Department of Environmental Protection (DEP). While the proposed development remains within the boundaries required by a 2004 Federal Settlement Agreement, the proposed number of homes is almost double what is allowed. The proposed 4,000 units is far too many for such a site, and the added units will adversely impact air quality and traffic in the area as well as add stress to the water and sewer systems. Lawyers for the parties involved in the 2004 Federal Settlement Agreement are working to reach a solution, and residents and activists are working to hold Hovnanian Industries to their original commitments.

*Write to the NJ Department of Environmental Protection, and ask that they hold a public hearing and/or request that the applicant be restricted to the 2,450 units stipulated in the 2004 Settlement Agreement.*

*The address is: New Jersey Department of Environmental Protection; Division of Land Use Regulation; PO Box 420, Code 501-02A; Trenton, New Jersey 08625; Attn: Manchester Bureau Chief. Send comments via email to Lindsey Logan at [lindsey.logan@dep.nj.gov](mailto:lindsey.logan@dep.nj.gov).*

## Federal Government

**Expectations:** In 1978 Congress created the Pinelands National Reserve, the country's first Reserve. As provided in the federal law, Governor Brendan T. Byrne established the Pinelands Commission, and a Comprehensive Management Plan (CMP) was prepared and approved by U.S. Secretary of the Interior Cecil D. Andrus on January 16, 1981. The federal government's primary roles in the Pinelands protection effort are to provide a representative on the Commission, to finance public land acquisition and to monitor the implementation of the CMP. At a minimum the federal government should enforce federal environmental laws, vote responsibly on actions before the Commission, support the CMP, and provide the necessary funding for land acquisition through the Land and Water Conservation Fund (LWCF).

## Environmental Protection Agency (EPA) Budget Cuts

The Trump administration proposed funding cuts for programs that have helped protect water quality in the Delaware River Basin including a 23% cut in grants to states. Grant programs for pollution prevention, such as helping industries figure out how to use less toxic materials or helping farmers reduce synthetic fertilizers and pesticides, also would be cut. Funding cuts will also impede the EPA's ability to address new threats to water quality in the Delaware River Basin. Runoff pollution, in which rainwater and melting snow pick up and carry fertilizers, pesticides, oil residue, sediment and road salt to nearby waterways, remains a huge problem. Reduced funding for the EPA's own programs and for grants to support the work of state and local partners means there will be a slower response to these new threats to drinking water quality. Now more than ever we need to advocate for strong environmental programs at the federal and state level to combat this assault on our environment.

## New Jersey Court System

**Expectations:** The judicial system is the branch of government responsible for interpretation and application of the law. This includes environmental laws and the Pinelands Protection Act as well. Laws are implemented through regulations. Environmental laws and regulations are routinely a source of controversy; the root causes typically being the interpretation of their necessity, fairness or cost. The long-term integrity of the Pinelands and its resources depends on the strict interpretation of its laws and regulations. The judiciary should uphold the spirit and the letter of the law.

## Appeals Court

### Walmart Development Site - Ocean County

In January 2017, the New Jersey state appeals court sent a key Department of Environmental Protection finding on wetlands at the proposed super-Walmart site back to the Department due to deficiencies PPA and Save Barnegat Bay raised. This site contains critical habitat for threatened species such as northern pine snake and Pine Barrens treefrog on the border between Toms River and Manchester. Because of this remand, the DEP was forced to open up public comment on its wetlands decision. Due to information submitted by PPA and partners documenting threatened species habitat, DEP was forced to reclassify the wetlands on the site as exceptional resource value, which limits the amount of development that can take place. Walmart then formally announced it has withdrawn from the project. Still, DEP is now reconsidering the Coastal Area Review Facility Act (CAFRA) permit for development of the site, even though there is no actual developer wanting to build there. PPA, our partners and interested residents now have another chance to make sure any development at the site is appropriate.



# New Jersey Department of Environmental Protection

**Expectations:** The DEP is responsible for protecting the state's environmental resources. It does this by developing and enforcing regulations that protect water quality, threatened and endangered species, and air quality; by overseeing state parks and wildlife management areas; by ensuring that there is enough water for both people and environmental needs; and by setting standards for contaminated site cleanup. Since there is significant overlap with Pinelands regulations, it is imperative that the DEP develops programs and enforces rules that are protective of the Pinelands.

## Enhanced Groundwater Standards

The DEP proposed strengthening the groundwater quality standards for 23 contaminants, one of which is perfluorononanoic acid (PFNA). PFNA, which was used in stain repellents, food packaging and textile coatings is linked to some cancers in humans and to reproductive and developmental problems in animals. PFNA is highly soluble and mobile in groundwater and was documented in and around Joint Base-McGuire-Dix-Lakehurst in Burlington and Ocean County. In addition to the groundwater quality standards, DEP proposed a health-based standard of 13 parts per trillion for PFNA in drinking water. Since 3 million residents rely on groundwater as a drinking water source, these two DEP measures are a positive step in protecting not only our groundwater but our drinking water as well.



## LOOKING TO VOLUNTEER IN THE PINE BARRENS?

Contact stewardship coordinator Jason Howell (Jason@PinelandsAlliance.org) to get involved. Volunteers help to restore damaged areas, protect the forest from ORV abuse, clean up trash and assist with monitoring projects.

## Water Supply Plan

After a 21-year wait and without fanfare, the New Jersey Department of Environmental Protection (DEP) released a draft of the long-anticipated statewide water supply plan. However, the water supply plan is missing a plan! It is more of a snapshot of existing conditions, with vague references to possible solutions. This is unfortunate since the plan identifies a number of watersheds that are already stressed from too many surface and groundwater withdrawals, yet the DEP continues to give out water allocations in these watersheds.

## New Jersey Natural Gas

On the same day the Pinelands Commission voted on the South Jersey Gas pipeline application, the DEP issued the coastal development and freshwater wetlands permits for the New Jersey Natural Gas Southern Reliability Link pipeline. Shortly thereafter, DEP issued the Freshwater Wetlands permit, Water Allocation permit, and Water Quality Certificate for the compressor station in Chesterfield, which will be operated by Williams Transcontinental Gas (Transco). Transco began construction on the compressor station in March, despite the presence of breeding migratory birds. PPA, Chesterfield and Bordentown, Sierra Club and People Over Pipelines are all challenging these actions in court.

*Warning sign along the boundary of the Joint Military Base.*



## Pinelands Commission

**Expectations:** A Commission whose members, although of diverse viewpoints, have a shared commitment to the purposes of the Pinelands Comprehensive Management Plan (CMP), the courage to debate tough issues at meetings, and a respect for public process. This means being prepared to engage in discussion on agenda items, asking pointed and relevant questions of Commission staff, and always voting to protect the Pinelands' unique natural resources.

By statute, the Pinelands Commission has fifteen commissioners who make up the governing body of the agency: seven appointed by the Governor; one appointed by each of the seven Pinelands counties; and one person appointed by the U.S. Secretary of the Interior. The gubernatorial appointees are subject to the review and consent of the New Jersey Senate. Members of the Commission serve staggered three-year terms. The commissioners have final say with regards to all activities regulated by the CMP and, through the Executive Director, guide a staff of approximately 40 people.

The Commission today consists of the following fifteen members: **U.S. Secretary of the Interior's Appointee:** Vacant. **Gubernatorial Appointees:** Mark Lohbauer, Candace Ashmun, D'Arcy Rohan Green, Robert Barr, Edward Lloyd, Richard Prickett, and Gary Quinn. **County Appointees:** Paul Galletta (Vice-Chair, Atlantic), Edward McGlinchey (Camden), Vacant (Cape May), Jane Jannarone (Cumberland), Giuseppe (Joe) Chila (Gloucester), Alan Avery, Jr. (Ocean), and Sean Earlen (Chair, Burlington). The Executive Director is Nancy Wittenberg who reports to the commissioners.

## South Jersey Gas

Last December, the Pinelands Commission adopted an ad-hoc process to address the South Jersey Gas application and others that fall into a similar category after the New Jersey State Appeals court remanded the application back to the Pinelands Commission for a vote by the full Commission. This process does not allow for an evidentiary hearing or sworn testimony, but instead provided an informal comment meeting during which individuals can present their views on the project. The

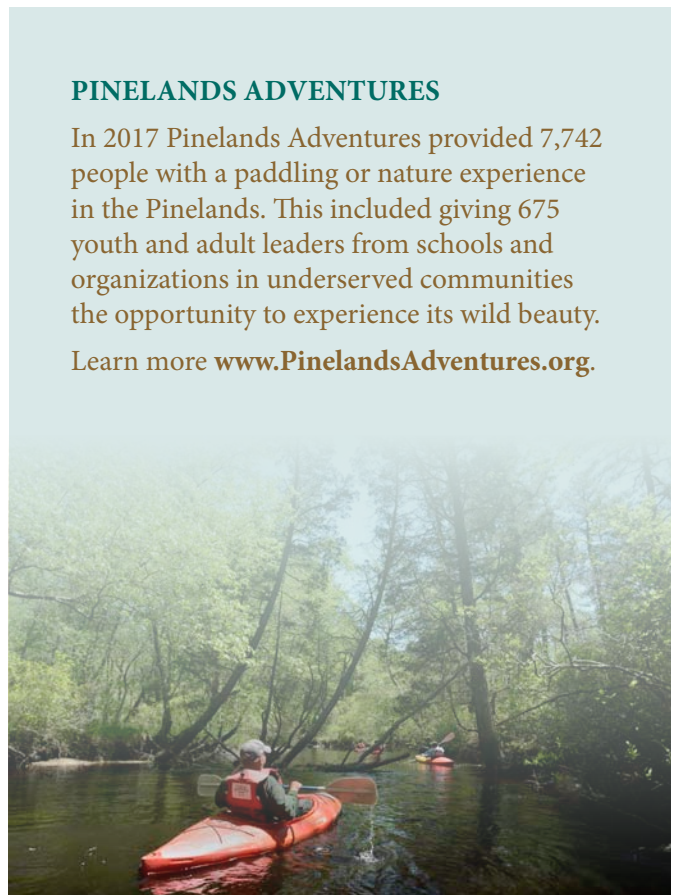
meeting, held in January, spanned an entire day and literally left many residents out in the cold, waiting to get into the venue. The Commission received over 6,000 public comments on this application. In February, the Commission voted, over massive protest, to approve the South Jersey Gas application. Nine commissioners voted to approve the application, five voted to reject, and one commissioner abstained. None of the commissioners who voted to approve the application gave a rationale for their vote. PPA and its partners are challenging this decision in court.

*"To say I'm outraged doesn't cover it. And if the people of the state saw what's really at work here, they would likewise be enraged. This has been a clear violation of the language in the Pinelands' Comprehensive Management Plan, and it's offensive that manipulative political activity led to it. It strikes at the heart of democratic government: The proposal was rejected; the governor got rid of the commissioners who were opposed and replaced them with members who did his bidding. That's stuff that takes place in the Kremlin." - Former Governor Jim Florio*

### PINELANDS ADVENTURES

In 2017 Pinelands Adventures provided 7,742 people with a paddling or nature experience in the Pinelands. This included giving 675 youth and adult leaders from schools and organizations in underserved communities the opportunity to experience its wild beauty.

Learn more [www.PinelandsAdventures.org](http://www.PinelandsAdventures.org).



## New Jersey Natural Gas

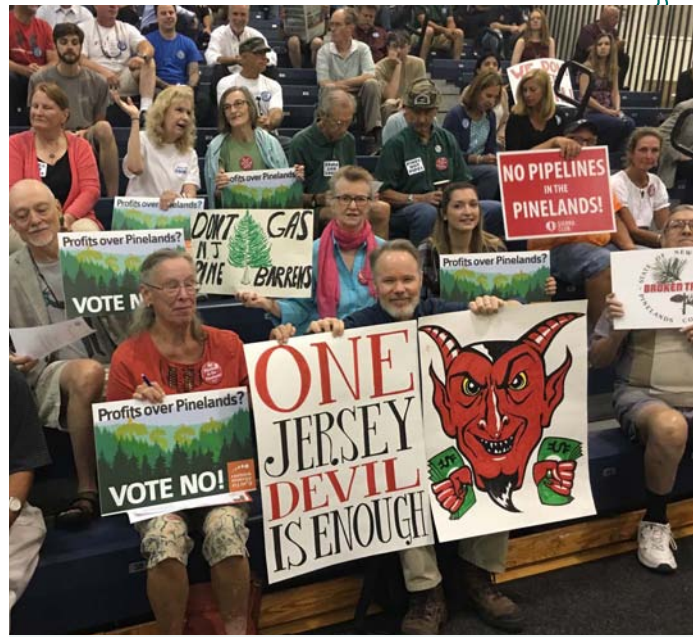
In September 2017, the Pinelands Commission approved the New Jersey Natural Gas Southern Reliability Link pipeline, a project which violates the Comprehensive Management Plan. The Commission received close to 2,000 public comments on this application, including expert reports demonstrating that the pipeline is neither necessary nor effective. Like the South Jersey Gas pipeline, this review process occurred without an evidentiary hearing or sworn testimony. The public comment meeting on this application was held in Toms River, a significant distance from the communities most affected. PPA and its partners are challenging this decision in court.

## Water Resources Protection

The Commission continues to delay proposing amendments to the CMP to address the growing concerns of over exploitation of the shallow Kirkwood-Cohansey aquifer. Since the inception of the CMP it was recognized that ground and surface water withdrawals from the shallow aquifer can have harmful impacts on the unique Pinelands ecosystem. In 1984 the Commission assembled a team of experts to discuss the impacts of groundwater withdrawals and as a result recommended the \$5.5 million Kirkwood-Cohansey aquifer study which was completed in 2012. The study confirmed what many had suspected, that the ecosystem is extremely sensitive to groundwater pumping. Despite the findings of this study completed five years ago, the Commission has not proposed any protective measures to date.

## Off Road Vehicle Damage on Public Lands

The Pinelands Commission took a critical step to secure the future of the Pinelands by passing a resolution that designates the United States Geological Survey topographical maps as the official road-map for Wharton State Forest. The Commission plans to repeat the mapping process for other State lands so that the problem does not continue to spread. This success is due to the hundreds of Pinelands enthusiasts who spoke to



*Residents attending July 2017 NJ Natural Gas pipeline public meeting.*

the Commission, came to volunteer events, and wrote letters in support of the resolution. The popularity of off-road vehicles is causing serious problems for the Pinelands. Now, the DEP needs to fulfill its responsibility for Wharton State Forest and implement the map designated by the Pinelands Commission. DEP is responsible for the stewardship of publicly owned land in New Jersey.

## Pinelands Educational Programs

This is still a reliable thumbs-up for the Pinelands Commission. Since its inception, the Pinelands Short Course provides a wonderful opportunity for people to learn more about the unique natural, historic and cultural aspects of the Pine Barrens. The 28th Annual Short Course cosponsored with Stockton University in Atlantic County featured 20 new presentations. In addition, the Commission's science staff continues to hold a research series where experts discuss their work within the Pinelands on a variety of topics. These presentations are typically more technical in nature and open to the public.



## State Legislature

**Expectations:** *The principle function of the State Legislature is to enact laws for the benefit and protection of New Jersey. At a minimum, legislators should not sponsor bills that undermine the intent of the CMP, and at best will sponsor legislation that actually protects and enhances environmental richness and diversity in New Jersey and the Pinelands.*

### Pinelands Ethics Bill A4849/S3283



A bill that would allow Commissioners to vote on matters in which they could substantially benefit from the outcome was stopped when the public became concerned. This bill contradicts the state Conflict of Interest Law which requires all members of state commissions to be held to the same ethical standards; if a member has a direct or indirect personal or financial interest, they must recuse themselves. The proposed bill would have allowed members to participate and vote in matters which they have indirect financial interests, likely creating clear conflicts of interest. Although the bill was approved by the State Assembly Agriculture and Natural Resources Committee, the public response to such a measure was sufficient to block its movement any further. Senator Van Drew and Assemblyman Andrzejczak are the prime sponsors of this measure.

## Passing of Plant Related Legislation

Earlier this year two plant related bills passed both houses and were signed by the governor. The first, S227/A963 requires the Department of Transportation (DOT), New Jersey Transit Authority and South Jersey Transit Authority to use only native vegetation for landscaping, land management, reforestation, or habitat restoration. This piece of legislation represents a significant step forward in the recognition of the roles native plants play in our landscape. The bill will not only improve DOT land by incorporating native flora, but will also give the native plant nursery trade a needed boost that will help to expand native plant offerings in the future.

The second bill that passed this year was S724/A3604 which establishes an Integrated Roadside Vegetation Management Program. This program will be made up of a committee that will be tasked with identifying ways to improve the management of vegetation along our state's roads. This represents another important step in our appreciation of native plants and the role roadsides play as habitat. In the Pinelands alone, roadsides represent 11,000 acres of potential habitat for many of our native plants. Encouraging native plant species will allow roadsides to become nearly maintenance free.

### NATIVE PINELANDS PLANT SALE 2018

We hold a native plant sale every April where plants native to the Pine Barrens and South Jersey are offered for sale. PPA members only are invited to the pre-sale on Friday, April 20th from 3pm to 6pm. The public is welcome on April 21st from 11am to 2pm.

Learn more [www.PinelandsAlliance.org](http://www.PinelandsAlliance.org).



*The Pine Barrens Gentian is one plant that benefits from more open habitat in the Pinelands.*

## Local Government

**Expectations:** *There are 56 municipalities that are entirely or partly within the Pinelands National Reserve. The Pinelands Protection Act envisioned that local governments would be primarily responsible for implementing the CMP. While some things are mandatory such as density requirements, municipalities were given flexibility with implementation of resource management goals of the CMP as they revise their land use regulations. PPA therefore expects municipalities to propose ordinances and master plans consistent with the conservation goals of the CMP.*

### Toms River - Walmart

After over a decade of advocacy and litigation, Walmart has abandoned its plans to build a superstore on threatened species habitat in Manchester and Toms River. Jaylin Holdings, the developer, still intends to develop this site. The good news is the DEP, through its wetlands and Coastal Area Review Facility Act (CAFRA) permitting processes, has limited the amount of development that can occur on the site. The bad news is that Toms River Township has designated this area as part of a Center, which allows greater impervious coverage such as roadways, buildings and parking on the site. The fight continues!



*The Pine Barrens is the global stronghold for the Pine Barren Treefrog which has lost most of its habitat elsewhere. The Walmart site contains critical habitat for this species.*

## Individuals Who Made a Difference

### All of You!

This year the Pinelands Commission went back on its 2014 decision and voted to approve the South Jersey Gas pipeline, over massive protest. Hundreds of residents showed up to comment on the application at the public meeting, which was held in a venue that was too small to accommodate everyone. Hundreds of people were left outside in the cold rain for hours waiting to enter the meeting. Shortly after the meeting, residents joined PPA to march along the pipeline route in Upper Township and demonstrate their opposition to the project. Approximately one thousand Pinelands activists showed up at the February vote to voice their opposition to the Commission action. While the outcome was discouraging, the outpouring of support for the Pinelands was empowering.

### People Over Pipelines

The resident group, People Over Pipelines, has been essential in fighting the New Jersey Natural Gas Southern Reliability Link pipeline and the Transco compressor station. People Over Pipelines has organized people to document habitat at the project sites, held rallies throughout the year, worked with an attorney to fight the project, and communicated the importance of stopping these projects at local and county government meetings. Their efforts spurred Bordentown and Chesterfield Townships to get involved in fighting the pipeline and compressor station. The townships and the group itself have been crucial partners during the various appeal processes.





## PINELANDS WATCH NETWORK

Pinelands Watch is an activist network run by PPA. The goal is to help those who are concerned about conservation issues in the Pinelands to get involved and make a difference. Through this program citizens keep up to date on important issues and learn how to advocate for Pinelands protections.

To join the Pinelands Watch Network and get updates on important actions contact Katie at [Katie@PinelandsAlliance.org](mailto:Katie@PinelandsAlliance.org)

## Bordentown and Chesterfield Townships

Bordentown and Chesterfield Townships have been fighting the compressor station and pipeline for the past several years. The station puts the health and safety of residents within both townships at risk. The leadership of both townships has been essential in advocating against the pipeline to the Board of Public Utilities, the Pinelands Commission and in conversations with Burlington County officials. The townships are the parties who were able to secure an evidentiary hearing in the Board of Public Utilities approval process, which was critical to establish the record of the case. Both townships are actively fighting the approvals on multiple fronts in court.

## Citizens United for Renewable Energy

CURE, spearheaded by Georgina Shanley, has energized southern New Jersey residents and kept them engaged through the long South Jersey Gas fight. In January, prior to the Pinelands Commission's public comment meeting on the South Jersey Gas pipeline, CURE hosted an education event for residents on the dangers of pipelines. The group helped turn out hundreds of residents to the South Jersey Gas pipeline comment meeting – so many people that the venue was well over capacity – and close to a thousand residents to the meeting at which the vote took place.



*Georgina Shanley at the July 2017 public meeting on the New Jersey Gas pipeline project.*

## Robert Tucker

PPA says thank you to Robert (Bob) Tucker who recently stepped down from PPA's Board of Trustees. Bob joined PPA's board in 1999. He retired in 1995 as Director of Science and Research at the New Jersey Department of Environmental Protection, and then served four years as a Research Professor at Cook College, Rutgers University, directing their EcoPolicy Center and teaching environmental policy. From 2000-2004, Bob directed a National Science Foundation/USEPA funded wetlands research project at the Stony Brook-Millstone Watershed Association. Bob has served for more than ten years on the New Jersey Wetlands Mitigation Council as well as on the boards of the American Littoral Society and the NY/NJ Baykeeper. Bob received a BA in Biochemistry from the University of California, Berkeley, and a Ph.D. in Zoology, specializing in marine ecology, from Duke University. For the last 18 years Bob has provided PPA with the wisdom of his long experience and deep expertise in the challenges we face in protecting the Pinelands' irreplaceable forests and waters. He will certainly be missed.

### *A special thank you to our contributing photographers!*

Ernest Cozens	(Back Cover)
Albert Horner	(Cover lower right)
Jason Howell	(Cover, upper left)
Robert Laramie	(Cover lower left)
Larry Lyons	(Cover, upper right)
Barry Nealis	(Page 1)



### SAVE THE SOURCE

In 2017 we launched [www.SavetheSource.org](http://www.SavetheSource.org) to share video stories from people whose lives and livelihoods depend on water from the Kirkwood-Cohansey aquifer and to inspire action for its protection. The complete collection of videos is now available and we hope you will check it out.



*The Pinelands Preservation Alliance depends on private donations from concerned citizens just like you. You make it possible for us to advocate for the Pinelands each and every day. Thank you for making our work possible!*





The **Pinelands Preservation Alliance (PPA)** works 365 days a year to protect the land, water, plants and wildlife of New Jersey's Pinelands. We have unparalleled expertise in Pinelands laws and regulations. This expertise allows us to engage thousands of people each year in actions to protect the wildest place in New Jersey. These accomplishments are funded by generous donors like you. Here is a sample of our work:

Protecting the Pinelands for 28 Years

1989

**HIGHLIGHTS OF PPA'S ACHIEVEMENTS**

2017

**WALMART SUPERSTORE STOPPED**

Walmart finally abandoned plans to build a huge store and parking lot on critical threatened species habitat in Ocean County after the Pinelands Preservation Alliance and its partner Save Barnegat Bay fought the project for over a decade in the courts and through the permitting process.



2017

**PINELANDS ADVENTURES**

PPA created Pinelands Adventures to help people explore the Pinelands. So far Adventures has taken over 10,000 people for canoe/kayak trips, guided nature and history tours, and education programs for youngsters and adults. Adventures has enabled more than 1,300 youth from distressed or underserved communities to experience the Pinelands in all its peace and beauty.



2015

**PASSAGE OF OFF-ROAD VEHICLE CONTROL LAW**

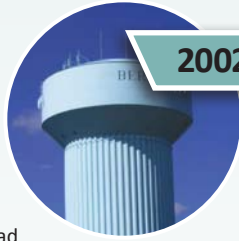
For 12 years, PPA led the effort to require registration and tagging of Off-Road Vehicles (ORVs), so police can keep ORVs off private property and public lands. In 2009, the state legislature adopted legislation establishing mandatory registration and tagging of ORVs, increasing fines for illegal riders and establishing a fund that can be used to create dedicated ORV parks.



2009

**SHUT DOWN THE BERLIN WELL**

Berlin Well #12 was constructed just outside of Pinelands boundaries to provide water to Camden County residents. But the well was draining nearby wetlands in violation of Pinelands and state protections. The state responded to pressure from PPA and residents by shutting down the well – the first time the state had shut down a permitted well because of ecological impacts.



2002

**NO NEW MINING IN PINELANDS FOREST AREA**

Recognizing the irrecoverable harm that expanding sand and gravel mining was doing to Pinelands forests; PPA successfully pressed the Pinelands Commissioners to bar new mining in the Pinelands Forest Area. This change permanently prevented 242,000 of acres of forested land from being mined.



1994

2016

**THE PINELANDS WINS IN COURT**

In 2015 South Jersey Gas applied for a 2nd time to build a pipeline through Pinelands. The Pinelands Commission's executive director tried to approve the project without a public hearing or vote of the full Commission. PPA led an appeal joined by partner organizations. The appeals court reversed the director's action in a major legal precedent affirming the rights of the public and its representatives on the Pinelands Commission.



2014

**DEFEATED THE SOUTH JERSEY GAS PIPELINE**

PPA led the way in stopping the construction of a large natural gas pipeline that violated Pinelands rules. Its approval threatens the future survival of the Pinelands. We submitted rigorous legal and scientific testimony and helped mobilize 20,000 people to speak out against the project. The Pinelands Commission deadlocked in their vote leading to the defeat of the project. Unfortunately the project came back and we are still fighting it today.



2004

**PROTECTED PRISTINE HABITAT**

In 2004, PPA helped to organize over 600 residents to oppose the development of a 300-acre tract of pristine Pine Barrens habitat in Berkeley Township, home to numerous native and rare species. As a result, the developer sold the land to the public in 2010, and it is now permanently protected.



1995

**STOPPED REPEAL OF THE PINELANDS PROTECTION ACT**

This effort by powerful South Jersey politicians to abolish the Pinelands Act and Plan unfolded between 1993 and 1995. PPA organized supporters to pack legislative hearings, producing sustained press coverage and defeated the proposed legislation. Since that time, no such frontal assault aimed at undoing the Pinelands has been attempted.



1989

**PINELANDS PRESERVATION ALLIANCE IS CREATED**



PINELANDS  
PRESERVATION  
ALLIANCE

Bishop Farmstead  
17 Pemberton Road  
Southampton, NJ 08088



Non-Profit  
Organization  
U.S. Postage  
**PAID**  
Philadelphia, PA  
Permit #164

The 2017 *State of the Pinelands Report* was released to our members and the public in January 2018.

Address Service Requested

---

## The Pinelands Preservation Alliance

The Pinelands Preservation Alliance is the public's leading voice for protecting the water, forests, plants and wildlife of the Pinelands. Founded in 1989, PPA has championed the effort to protect the Pinelands by:

- Fighting bad policies and developments
- Taking legal action when necessary
- Promoting smart growth to help existing communities thrive
- Getting people involved so they can add their voice to the cause
- Taking people of all ages into the Pine Barrens to discover its wonders.

Our members are the most important source of support for the preservation of the New Jersey Pinelands. Members receive a yearly subscription to our newsletter, discounts on Pinelands Adventures field trips, rentals and merchandise, and invitations to members' only events. To join call us at 609-859-8860 or visit us on the web at [www.PinelandsAlliance.org](http://www.PinelandsAlliance.org) or [www.PinelandsAdventures.org](http://www.PinelandsAdventures.org)

