



HSF00003.01

December 6, 2013

**Description of NJDEP Green Acres Funding Area
Project Number xxxx-xx-xx
Tax Lot 21.02 in Block 54
Lands N/F Township of Stafford (Deed Book 5445 Page 973)
Township of Stafford, Ocean County, New Jersey**

All that certain tract or parcel of land located at Cedar Bridge Road in the Township of Stafford, County of Ocean in the State of New Jersey and being more particularly bounded and described as follows:

BEGINNING at a concrete monument with identification disk to be set, said point being the most southerly corner of Lot 21.02 in Block 54, said point being distant 3,849.25' feet along the following seven (7) courses from the intersection of the common corner of Tax Lots 30.01 and 31 in Block 54, said point also being the westerly line of Cedar Bridge Road (66' foot wide Right-of-Way), said BEGINNING point also having NJPCS values of N. 319,676.6512 feet, E. 557,815.2253 feet and from said beginning point and in the North American Datum of 1983, U.S. Survey Foot, New Jersey State Plane Coordinate bearing system; proceeding thence,

- a. North 89° 28' 48" West, along the common line of Tax Lots 30.01 and 31 in Block 54, a distance of 410.64' feet to a point; thence,
- b. South 03° 41' 49" East, continuing along the common line of Tax Lots 30.01 and 31 in Block 54, a distance of 150.00' feet to a point; thence,
- c. South 86° 18' 10" West, continuing along the common line of Tax Lots 30.01 and 31 in Block 54, a distance of 600.00' feet to a point; thence,
- d. South 10° 53' 19" West, along the common line of Tax Lots 21.01 and 31 in Block 54, a distance of 165.18' feet to a point; thence,
- e. South 03° 41' 49" East, continuing along the common line of Tax Lots 21.01, 25 and 31 in Block 54, a distance of 992.08' feet to a point; thence,
- f. South 86° 17' 22" West, along the common line of Tax Lots 21.01 and 18 in Block 54, a distance of 817.08' feet to a point; thence,
- g. North 03° 41' 49" West, along the common line of Tax Lots 21.01 and 20 in Block 54, a distance of 714.27' feet to the Point and Place of BEGINNING and continuing; thence,
1. North 03° 41' 49" West, along the common line of Tax Lots 21.02 and 20 in Block 54, a distance of 549.63' feet to a concrete monument found being offset 0.16' feet North by 0.03' feet East; thence,
2. North 06° 04' 21" East, continuing along the common line of Tax Lots 21.02 and 20 in Block 54, a distance of 655.59' feet to a concrete monument found, being offset 0.04' feet North by 0.10' feet West; thence,





Description of Property
Tax Lot 21.02 in Block 54
Township of Stafford, Ocean County, New Jersey

December 6, 2013
HSF0003.01
Page 2

3. North 23° 55' 32" East, along the common line of Tax Lots 21.02, 20 and 9 in Block 54, a distance of 260.42' feet to a concrete monument found; thence,
4. South 29° 49' 08" East, along the common line of Tax Lots 21.02 and 9 in Block 54, a distance of 210.57' to a ½" steel rebar with identification cap to be set; thence,
5. South 22° 49' 46" West, along the common line of Tax Lots 21.02 and 21.01 in Block 54, a distance of 105.14' feet to a ½" steel rebar with identification cap to be set; thence,
6. South 12° 13' 08" West, continuing along the common line of Tax Lots 21.02 and 21.01 in Block 54, a distance of 120.20' feet to a ½" steel rebar with identification cap to be set; thence,
7. South 01° 36' 30" West, continuing along the common line of Tax Lots 21.02 and 21.01 in Block 54, a distance of 120.20' feet to a ½" steel rebar with identification cap to be set; thence,
8. South 03° 41' 49" East, continuing along the common line of Tax Lots 21.02 and 21.01 in Block 54, a distance of 398.20' feet to a ½" steel rebar with identification cap to be set; thence,
9. South 31° 57' 42" West, continuing along the common line of Tax Lots 21.02 and 21.01 in Block 54, a distance of 116.23' feet to a ½" steel rebar with identification cap to be set; thence,
10. South 27° 32' 49" West, continuing along the common line of Tax Lots 21.02 and 21.01 in Block 54, a distance of 109.32' feet to a ½" steel rebar with identification cap to be set; thence,
11. South 20° 54' 36" West, continuing along the common line of Tax Lots 21.02 and 21.01 in Block 54, a distance of 113.43 feet to a ½" steel rebar with identification cap to be set; thence,
12. South 13° 52' 46" West, continuing along the common line of Tax Lots 21.02 and 21.01 in Block 54, a distance of 113.43 feet to a ½" steel rebar with identification cap to be set; thence,
13. South 10° 21' 51" West, continuing along the common line of Tax Lots 21.02 and 21.01 in Block 54, a distance of 114.09' feet to the Point and Place of BEGINNING.

Said description of Lot 21.02, Block 54 containing 204,234 square feet (4.689 acres) of land and being subject to any easements or restrictions of record.





Description of Property
Tax Lot 21.02 in Block 54
Township of Stafford, Ocean County, New Jersey

December 6, 2013
HSF0003.01
Page 3

The property-in-question may be subject to such facts and conditions, which would be disclosed, in a search of the public record, beyond that which was obtained for the issuance of the title binder.

The above description was written pursuant to a survey of property designated as Block 54, Lot 21.02, on the municipal Tax Map of the Township of Stafford, County of Ocean, State of New Jersey. Map entitled "Survey of Property for N/F Township of Stafford, Lot 21.02, Block 54, Township of Stafford, Ocean County, New Jersey". Said survey having been prepared by John J. Stefani, Professional Land Surveyor, of CME Associates, 1460 Route 9 South, Howell, New Jersey, as per NJDEP, Green Acres Program, specifications, and is marked by CME Associates as File No. HSF00003.01, Drawing No. 2T (sheet 2 of 2), dated December 6, 2013. A reduced copy of said plan is attached hereto and made a part hereof.

John J. Stefani
Prof. Engineer and Land Surveyor
NJ License No. 24271

JJS:QL:ls





LEGEND OF ABBREVIATIONS

PLATTED WITHIN
 WITH THE ORIGINAL
 RECORDING OF THIS
 PLAT AND THE
 RECORDING OF THE
 ORIGINAL PLAT
 OF THE ORIGINAL
 RECORDING OF THE
 ORIGINAL PLAT
 OF THE ORIGINAL
 RECORDING OF THE
 ORIGINAL PLAT

LOT 21.02

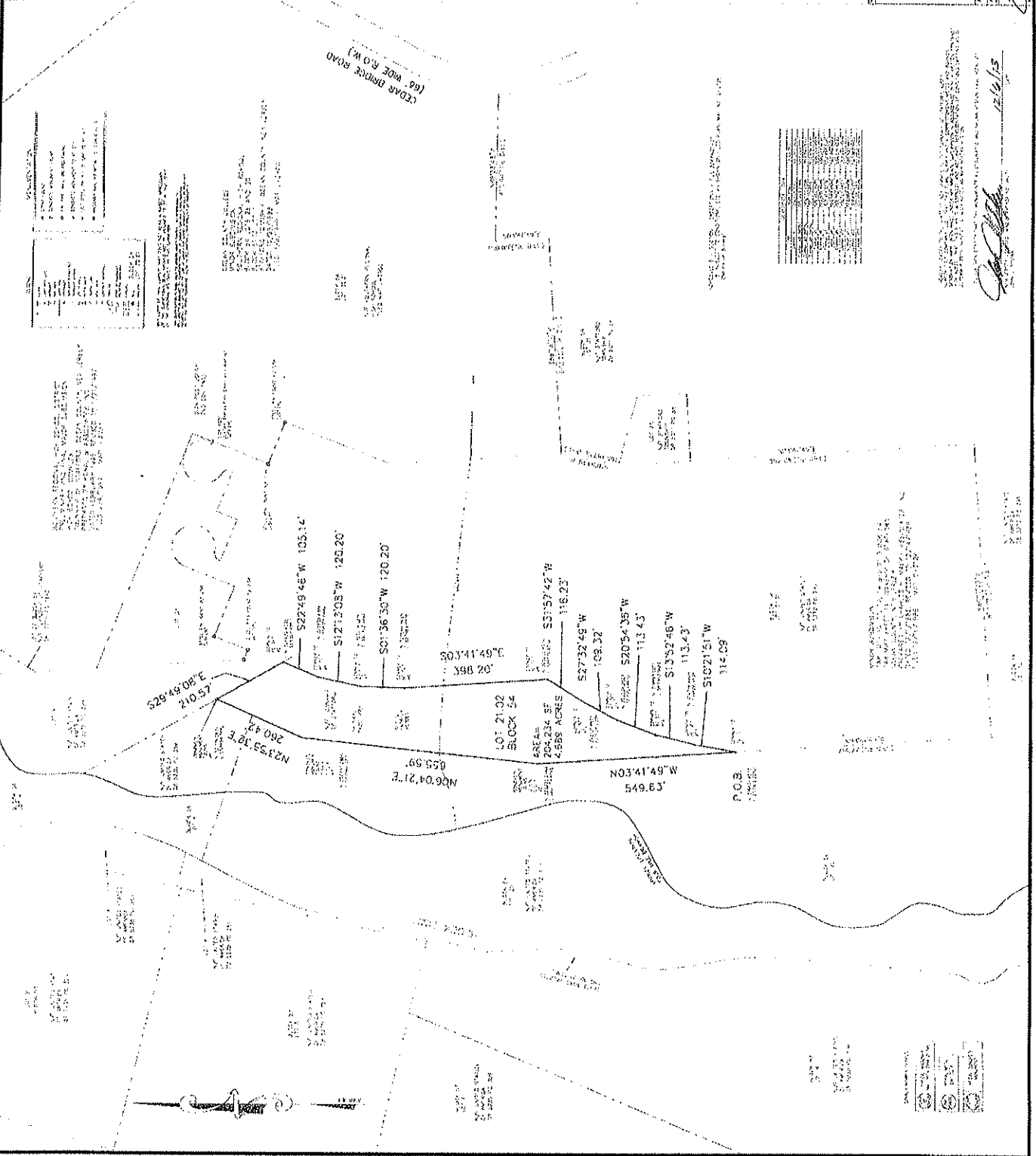
2

1000001

LOT 21.02 BLOCK 54

JOHN J. STEWART, L.L.S.

12/16/13



JOHN H. ALLGAIR, P.E., P.P. (1983-2001)
DAVID J. SAMUEL, P.E., P.P.
JOHN J. STEFANI, P.E., I.S., P.P.
JAY B. CORNELL, P.E., P.P.
MICHAEL J. McCLELLAND, P.E., P.P.
GREGORY R. VALES, P.E., P.P.



TIMOTHY W. GILLEN, P.E., P.P.
BRUCE M. KOCH, P.E., P.P.
BEHRAM TURAN, P.E.
TREVOR J. TAYLOR, P.E., P.P.
LOUIS J. PLOSKONKA, P.E.

NEW JERSEY DEPARTMENT OF ENVIRONMENTAL PROTECTION
GREEN ACRES PROGRAM - SURVEYOR'S CERTIFICATION AND SUMMARY FORM

PROJECT INFORMATION

PROJECT NAME: Lot 21.02 Block 54
SELLER'S NAME: Township of Stafford
MANAGING AGENCY/ENTITY: Township of Stafford
ACQUISITION PARTNER: N/A
GREEN ACRES SOURCE OF FUNDING/ PROJECT NUMBER: xxxx-xx-xxx

GREEN ACRES PARTICIPATION ACRES THIS FUNDING SOURCE: 4.689 Acres

ACQUISITION PARCEL INFORMATION

BLOCK: 54 LOT: 21.02 MUNICIPALITY: Stafford COUNTY: Ocean
ENTIRE X or PART (OF LOT) FEE X PERCENT OF LOT: 100 ACRES: 4.689

ACQUISITION SURVEY INFORMATION

PREPARED FOR: Township of Stafford
SURVEY FIRM: CME Associates CONTRACT No. N/A
SURVEYOR: John J. Stefani NJPLS No. 24271
DATE ON SURVEY PLAN: 12/6/13 DATE SIGNED: 12/6/13 DATE LAST REVISED: N/A

ACQUISITION TITLE INFORMATION

TITLE COMPANY: Surety Title Company, LLC.
COMMITMENT No. 33477ACD-01 DATE OF COMMITMENT November 15, 2013

CERTIFICATION

I hereby certify that I have completed the above survey(s) in accordance with the Green Acres Survey Guidelines contained in a written contract as indicated. Based upon an actual field survey and my examination of evidence, the above parcels consist of a total surveyed area of 4.689 acres subject to the following:

EASEMENTS

RESTRICTIONS

CONDITIONS N/A CLAIMED NJ TIDELANDS N/A LEASEHOLD N/A

PUBLIC ROAD N/A

CLOUDED TITLE N/A

UNDERWATER

LICENSE N/A

ENCROACHMENTS:

NUMBER OF DESCRIPTIONS: 1


SURVEYOR'S SIGNATURE, DATE & SEAL

REVIEW BY GREEN ACRES, NJDEP

NET AREA OF ENCUMBRANCE DETERMINED BY GREEN ACRES _____ AC.

