

COME OUT!

Learn about the South Jersey Gas project being proposed through the Pinelands!

South Jersey Gas, a private for profit entity, is asking the N.J. Pinelands Commission (the State agency that regulates the Pinelands area) for a special exception to the rules that protect the Pinelands, so that it can run 22 miles of pipe from one end of the Pinelands to the other.

The 24-inch diameter, high-pressure pipeline would go through some of the most pristine areas of Pinelands from Maurice River Township to the B.L. England power plant at Beesleys Point in Atlantic County. There will be huge amounts of land disturbance associated with the installation of this pipeline.

The proposed route through the Forest Management Area (environmentally sensitive management area) is a clear violation of Pinelands regulations.

Sponsored by:

Dont Gas The
Pinelands Coalition
and
Pinelands Preservation Alliance

When:
October 16, 2013
7 p.m.

PRESENTATION

Where:

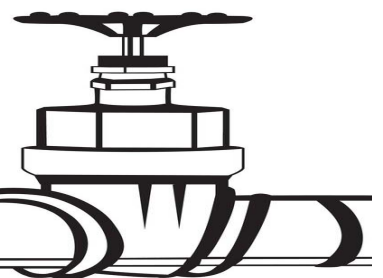
Unitarian Congregation Pomona
NJ. 75 S. Pomona Road
Egg Harbor 08215
(behind Stockton)
<http://www.uucsjs.org/>

Who:

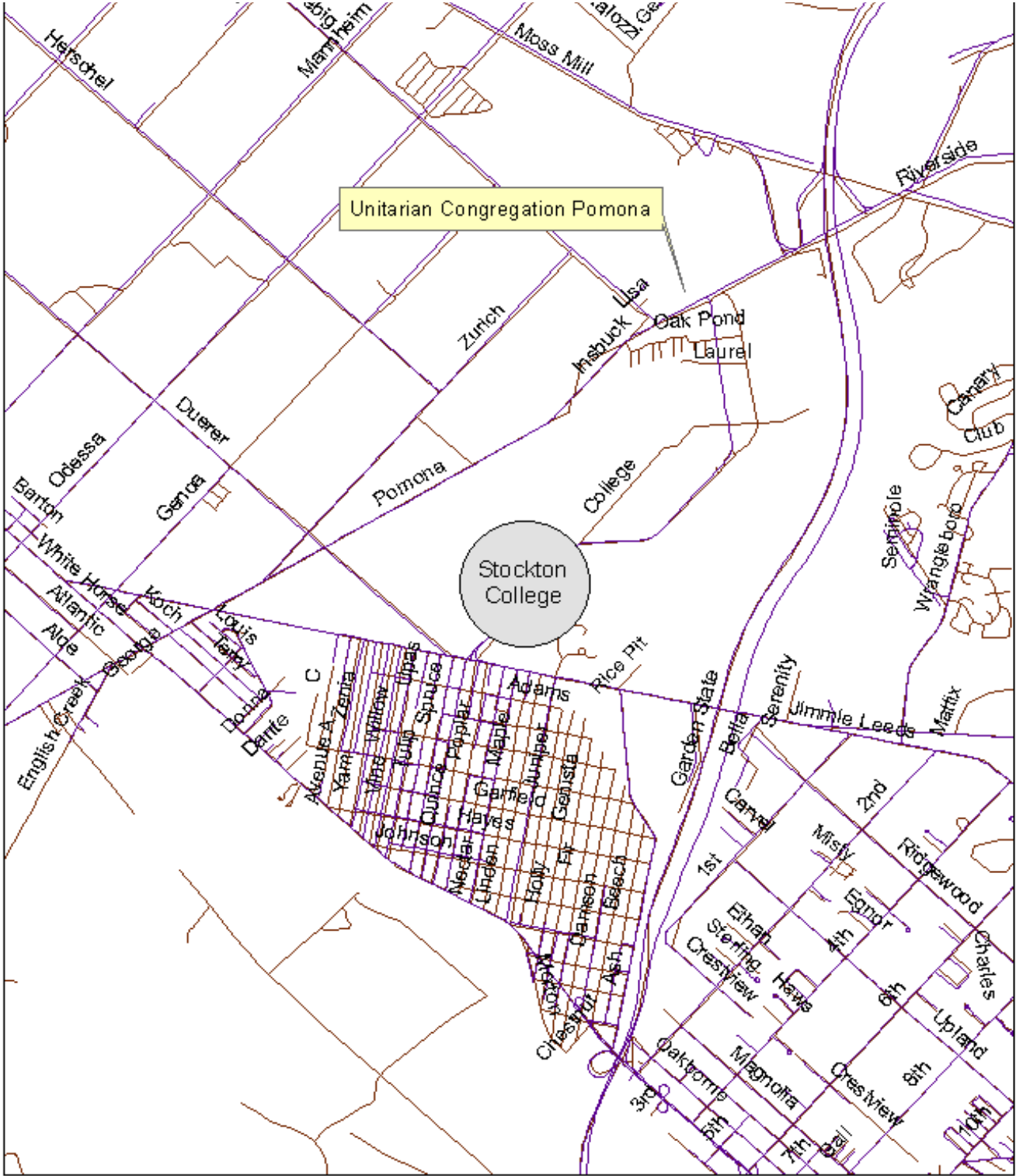
Kevin Heatley, Restoration Ecologist
Biohabitats Inc., Baltimore, MD
will talk about
*Edge Impacts, Invasive Species,
Directional Drilling and,
Site Restoration*

ALL WELCOME!

For more information contact: theresa@pinelandsalliance.org or 609-859-8860 Ext 22



MAP



75 S. Pomona Road