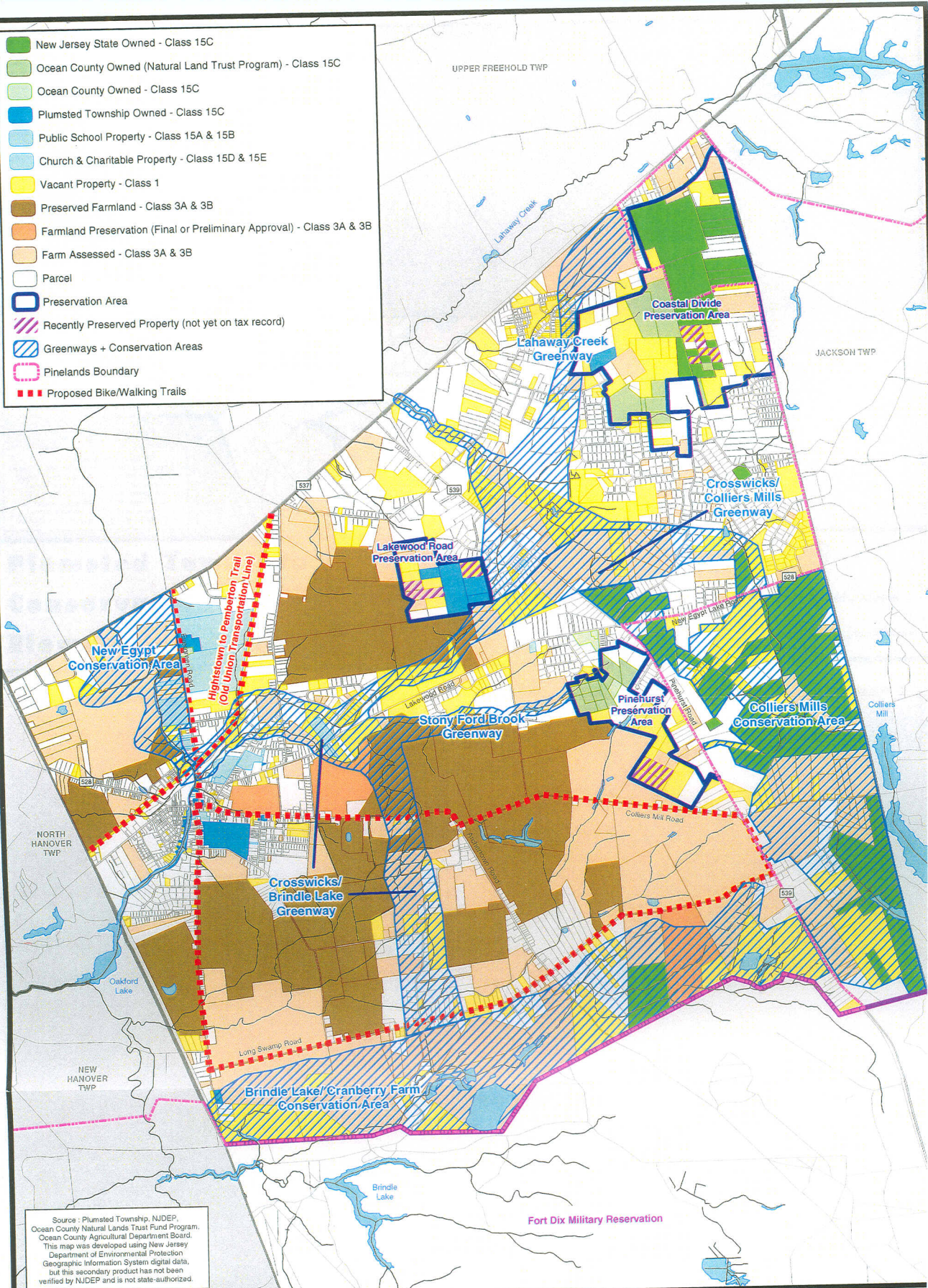




- New Jersey State Owned - Class 15C
- Ocean County Owned (Natural Land Trust Program) - Class 15C
- Ocean County Owned - Class 15C
- Plumsted Township Owned - Class 15C
- Public School Property - Class 15A & 15B
- Church & Charitable Property - Class 15D & 15E
- Vacant Property - Class 1
- Preserved Farmland - Class 3A & 3B
- Farmland Preservation (Final or Preliminary Approval) - Class 3A & 3B
- Farm Assessed - Class 3A & 3B
- Parcel
- Preservation Area
- Recently Preserved Property (not yet on tax record)
- Greenways + Conservation Areas
- Pinelands Boundary
- Proposed Bike/Walking Trails



Source: Plumsted Township, NJDEP, Ocean County Natural Lands Trust Fund Program, Ocean County Agricultural Department Board. This map was developed using New Jersey Department of Environmental Protection Geographic Information System digital data, but this secondary product has not been verified by NJDEP and is not state-authorized.

Plumsted Township Conservation Element

Map 16:
Proposed Conservation Areas
and Greenway Connections


 0 0.5 Miles
 Delaware Valley
Regional Planning Commission
November 2003