



PINELANDS
PRESERVATION
ALLIANCE

May - June 2013
Issue 65

INSIDE:

Sustainable funding
for preservation . . . 2

Pinelands
Commission meeting
schedule 3

Upcoming PPA Event

Pinelands 101
Introduction to
Pinelands Ecology

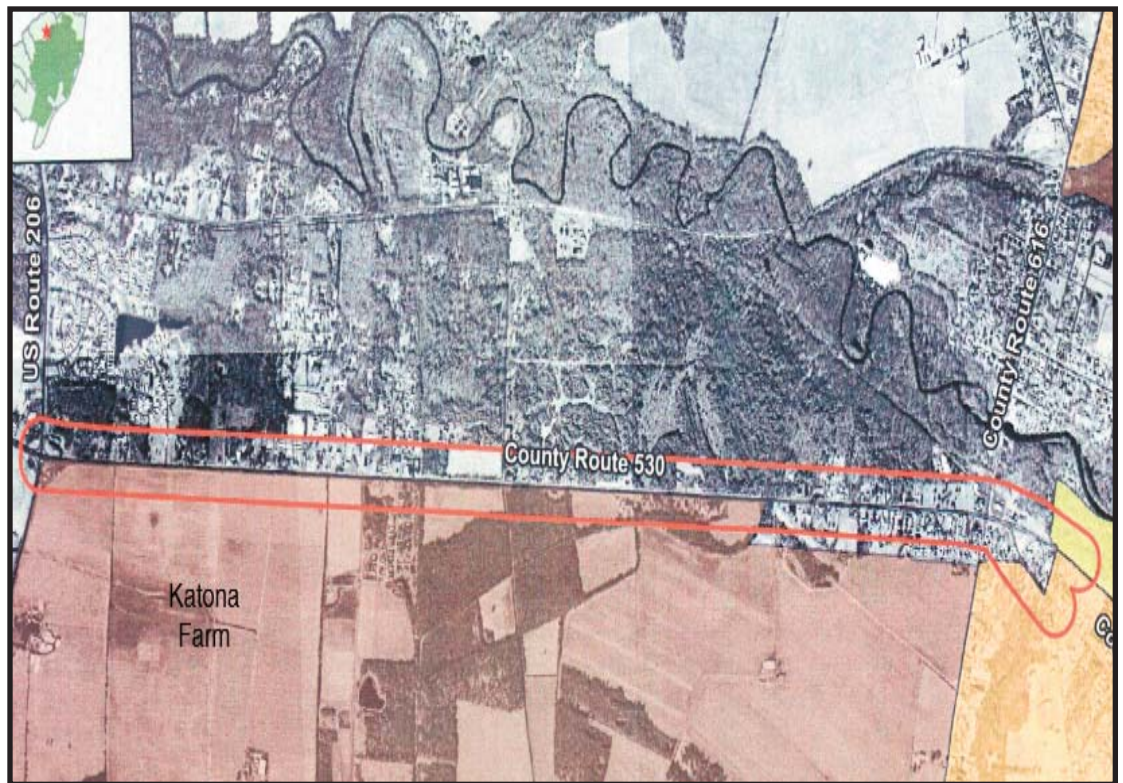
Wednesday, May 22nd
7 p.m. to 9 p.m.

Amy Karpati, Ph.D., PPA's
Director of Conservation Science
will help you brush up on your
ecological knowledge of the
Pines, this presentation will
highlight the basic ecology that
makes the Pine Barrens the
Pine Barrens.

Registration is required by
calling Tom Dunn 609-859-
8860 ext 14. Fee \$10.

17 Pemberton Road
Southampton, NJ 08088
T - 609.859.8860
F - 609.859.8804
Email: ppa@pinelandsalliance.org
Web: www.pinelandsalliance.org

PINELANDS WATCH



First Time Release of Pinelands PDC's Restrictions

Burlington County is proposing to widen County Route 530 in Pemberton and Southampton Townships by adding a center turn lane and shoulders on each side of the roadway. In order to accomplish this land had to be obtained on either side of the roadway along the 2.8 mile stretch of the widening project. If the land was to be gained for the widening on the north side of the existing roadway several businesses and single family homes would have to be purchased. If it was to be land on the southern side the conservation restrictions placed on the 604 acre Katona farm would have to be released.

The development rights for the Katona farm in Southampton Township were purchased with public money by Burlington County in 1983 and turned over to the State when the Pinelands Development Credit Bank was established in 1985.

The conservation easement that was placed on the Katona farm was to preserve it in its natural, scenic, open and existing state, in exchange for 29.75 Pinelands Development Credits (PDC) which were turned over to the Pinelands Development Credit Bank. These credits were sold by the

bank to developers giving them the right to build additional dwelling units in the Regional Growth Area of the Pinelands.

Now in 2013, Burlington County and the Pinelands Commission have agreed to release the conservation easement placed on this farm. This is the first time Pinelands PDCs have been released. There are no rules or guidelines to allow this but at the June 8, 2012 meeting the Pinelands Commissioners voted on the Public Development application submitted by Burlington County with the following conditions:

1. The County must acquire and place deed restrictions on additional agricultural lands in the Pinelands Area portion of Burlington County to which a minimum of 5.25 PDC's have been allocated by the Commission, or must make a contribution of \$202,986 to the Pinelands Commission for inclusion in the Pinelands Conservation Fund.
2. The County must obtain any other applicable permits and approvals, including any approvals from the NJDEP, such as a certifi-

continued on page 2

cate issued in accordance with the requirements of the New Jersey Conservation Restriction and Historic Restriction Act.

Burlington County, on October 18, 2012, submitted a letter to the Pinelands Commission indicating that it had purchased and retired 11.25 PDCs. These PDCs were associated with the purchase of the Alloway Farm in Shamong Township and the Haines Farm in Tabernacle Township, farmland which the county had agreed to purchase prior to the any approval by the Pinelands Commission of its roadway project. In fact, the State Agriculture Development Committee (SADC) has approved a state grant that will cover these purchases.

Any entity that is required to permanently deed restrict land by the Pinelands Commission as a condition of approval, should never be permitted to use any source of funding that is already dedicated for the preservation of open space or farmland. Otherwise there is no genuine compensation for the lost protections.

So in the end there is no new farmland preservation to offset the lifting of the Katona Farm protections. There is actually a net loss of protected farmland.


PPA feels that the release of the PDC restriction from the Katona farm is not only governed by the Pinelands Commission. The Katona Farm PDC restriction is a "conservation restriction" by definition and it is held by Burlington County, a local government unit, that has an active Recreation and Open Space Inventory (ROSI) filed with Green Acres, meaning that these restrictions and the parcels that they protect are governed by the New Jersey Conservation Restriction and Historic Preservation Restriction Act and the NJ Green Acres rules. A copy of the NJ Green Acres rules can be found at www.nj.gov/dep/greenacres/pdf/regs.pdf. Both of these regulations require DEP Commissioner Bob Martin's approval for the release of land.

Before obtaining DEP approval, public hearings would need to be held to give the public an opportunity to comment on the release. PPA has not heard of any schedule public hearings but is watching the process. If you see any notices or want to be notified if PPA learns of a hearing, email Theresa at Theresa@pinelandsalliance.org.


What can you do?

- Write the Pinelands Commission and tell them public open space funds should not be used to support development projects or to compensate for the mitigation of development. Send your comments to P.O. Box 359, New Lisbon, NJ 08064.
- Or attend an upcoming Pinelands Commission meeting and speak at the public portion to the Commissioners. The Pinelands Commission meeting schedule is listed on the next page.





New Jersey's
Keep It Green Campaign
to Preserve New Jersey's Parks, Natural Areas, Clean Water, Farmland & Historic Treasures

En Español 

Sustainable funding for the preservation and stewardship of New Jersey's natural, recreational and historic treasures for generations to come

As you know, land preservation is an important feature in the Pinelands National Reserve. Many Pinelands municipalities are home to preserved farmland, open space and historic properties. This year marked the end of funding for all these acquisitions as the state officially used up all the funds under the 2009 bond act for green acres, farmland preservation and historic preservation.

The NJ Keep it Green (KIG) Coalition has fought long and hard for continued funding for all these programs including blue acres. The coalition's 175 members, including Pinelands Preservation Alliance, is campaigning for a dedicated source of funding by working with the legislature to pass a bill to constitutionally dedicate a portion of the state sales tax to fund these programs for the next 20 years.

A long-term, dedicated state funding source will work:

- To improve and ensure proper stewardship of parks, preserved lands and historic sites;
- To provide equitable access to quality parks and recreation in urban, suburban and rural areas;
- To match and leverage county, local, and private funds for these purposes;
- To protect drinking water supplies, water quality and alleviate costly flood damages;
- To preserve fish and wildlife habitat and provide public access for hunting and fishing;
- To revitalize cities and towns; and
- To protect our quality of life and economic prosperity.

Together we can keep New Jersey green, New Jersey's agriculture alive, and preserve New Jersey's historic treasures for our quality of life and future generations!

To show your support for sustainable funding, visit www.njkeepitgreen.org/statementofsupport.htm and sign our petition!

Pinelands Commission's Webpage for Development Applications

The Pinelands Commission has a page on its website to assist the public in learning what applications for public development or waivers of strict compliance are being reviewed at the by the Commission. This page can assist the public in learning what applications have been submitted even before the applicant's public notice is published in the newspaper. Just log onto <http://www.state.nj.us/pinelands/>, navigate to "Permitting & Applicant Services" then "Application Status Reports" this brings you to a list of three types of reports:

- The Active Public Development Applications Report takes you to a list of all active applications that are now currently pending before the Pinelands Commission for approval.
- The Active Waivers of Strict Compliance Report takes you to the list of applications by private landowners who have applied for a development application needing a waiver of strict compliance from the provisions of the Pinelands Comprehensive Management Plan.
- The Bi-Weekly Status Report link takes you to a report that changes on a two week basis and lists all the activities on any application, public or private, that is pending before the Pinelands Commission. This report lists projects first by county and then by municipality, and gives you a small description of the activity and action by the Commission on an application.

These reports give you the block, lot and application numbers, making it easier to submit comments or to make an appointment to review the applications while they are being reviewed.



Editor: Theresa Lettman

Distributed to members of the Pinelands Watch Network and other members of the public. If you would like to receive these alerts, please contact Theresa Lettman at (609) 859-8860 Ext 22 or theresa@pinelandsalliance.org.

Prior issues are available at: www.pinelandsalliance.org

Printed on 30% recycled paper.

How to get Things Done without Being Elected

Thursday, June 18th, 7 pm - 9 pm
Bishop Farmstead
17 Pemberton Road, Southampton

Are you a concerned community member or on your town's Green Team or Environmental Commission? Join the Citizens Campaign's Renee Koubiadis to learn how to save your town money and foster the implementation of Pinelands-friendly and socially equitable practices. You will learn how to advocate as a Citizen Legislator, Citizen Journalist or how to secure an appointed position on a board or commission that deals with environmental/economic/social issues.

All participants will receive a copy of the presentation and a copy of The Citizens Manual.

Admission is free, but registration is required. To register call Tom Dunn at 609-859-8860 ext 14 or tomdunn@pinelandsalliance.org

Get Involved!

Attend a Pinelands Commission Meeting

Friday, May 10, 2013
Friday, June 14, 2013
Friday, July 12, 2013

Pinelands Commission meetings are held at 9:30 a.m. at the Richard J. Sullivan Center for Environmental Policy and Education, 15C Springfield Road, New Lisbon. Agendas are posted one week prior to the meeting date at:

www.state.nj.us/pinelands/about/mtng/

The Pinelands needs your help...and so do we!
Please support our mission & become a member

Name: _____

Address: _____

City: _____ County: _____ State: _____ Zip: _____

Phone (Day): _____ (Evening): _____

E-Mail: _____ Referred by: _____

Check enclosed payable to PPA

Mastercard

Visa

Discover

Card Number: _____ Exp. Date: _____

Signature of Card Holder: _____

Membership Categories

- Basic \$35
Family \$60
Sponsor \$100
Patron \$250
Benefactor \$500
Chairman's Circle \$1,000
Other _____

ALL MEMBERS RECEIVE:

A PPA membership card
A year's subscription to Inside the Pinelands
A PPA window sticker
Discounts on PPA merchandise and events

A Sponsor will receive a copy of the Pine Barrens: Up Close & Natural DVD
A Patron will receive John McPhee's seminal book *The Pine Barrens*
A Benefactor will receive The Pine Barrens of New Jersey, a photographic history of this region
Chairman's Circle will receive the book Seasons of the Pines and a personalized tour of the Pinelands



Pinelands Preservation Alliance

Bishop Farmstead
17 Pemberton Road
Southampton, NJ 08088

Address Service Requested

Nonprofit Organization
U.S. Postage
PAID
Permit #12
Vincentown, NJ 08088

First Time Release of Pinelands PDC's Restrictions



Please Recycle this newsletter! When finished give it to a friend or neighbor and encourage them to learn about PPA's mission and programs.