



November 28, 2011

Ms. Saara Ali
Bureau of Landfill and Recycling Management
NJDEP – DIVISION OF SOLID AND HAZARDOUS WASTE
401 East State Street, P.O. Box 414
Trenton, New Jersey 08625-0414

Re: Quarterly Landfill Gas Survey – 4th Quarter 2011
Legler Landfill, Facility No. 1511A
Jackson Township, Ocean County, New Jersey
FPA No. 08E004A

Dear Ms. Ali:

INTRODUCTION

This report presents the testing procedures and analytical results of the Quarterly Landfill Gas (LFG) survey conducted by French & Parrello Associates, P.A. (FPA) on November 17, 2011, at Legler Landfill and surrounding properties, Jackson Township, Ocean County, New Jersey. The subject landfill is identified as New Jersey Department of Environmental Protection (NJDEP) Facility No. 1511A.

BACKGROUND

As part of the Closure and Post-Closure Plan Approval dated February 21, 1996, and Corrective Action Plan dated March 2002, methane gas surveys are to be conducted around the landfill perimeter to monitor potential lateral, offsite gas migration. Since 2000, methane gas concentrations have increased in the western portion and southwestern corner of the landfill. As a result, the NJDEP directed Jackson Township to perform quarterly offsite gas surveys to monitor methane gas migration.

Pursuant to the NJDEP letter received April 1, 2009, monitoring is required to be conducted during days of falling barometric pressure in order to accurately monitor gas migration. Barometric pressure data was gathered from the Rutgers Weather and Climate Network station located in Cream Ridge, NJ, approximately 13.5 miles from the Subject Property. Additionally, pursuant to the NJDEP letter dated June 23, 2010, the delineation protocol has been modified. Gas sampling points between each well are no longer required; however, whenever methane gas is detected within one of the onsite gas monitoring wells, three additional sampling points are required.

received
12/2/11

One point is required 25 feet on either side of the well and the third point is required 25 feet behind (offsite) of the well. In the event methane gas is detected in one of the delineation samples, the same delineation protocol is to be used until methane gas is no longer detected. Delineation samples were collected on the boundary of Block 37, Lot 1, and Block 38, Lot 16.02, and expanded outward from the onsite sampling points.

LANDFILL GAS TESTING PROCEDURES

Gas sampling was performed at 39 gas sampling locations: 23 gas monitoring wells, 14 temporary gas sampling points (GSPs) and two flares. The wells were sampled immediately after removing the locked, metal protective cap by inserting dedicated three-foot, 3/16-inch, white polyethylene tubing through a pre-drilled hole in the plastic well cap. The tubing was attached to the LANDTEC GEM-2000 Gas Extraction Monitor (GEM-2000) which instantaneously analyzed the LFG. GSP samples were collected utilizing an AMS Soil Sampling Kit. A slam bar and soil gas probe were utilized to penetrate the soil to an approximate depth of two and one-half feet. Dedicated 3/16-inch inside diameter, polyethylene tubing was pre-fed through the probe, and the GEM-2000 was utilized to instantaneously analyze LFG. GSPs are located primarily along the property boundary 25 feet on each side of the wells containing detectable concentrations of methane gas. On February 4, 2008, four-inch PVC ball valves equipped with fabricated conversion nipples, were installed on the Flares. These valves ensure a sealed connection to the LANDTECH GEM-2000 while sampling.

Offsite gas sampling was conducted on Block 38, Lots 15 and 16.02, as well as Block 37, Lot 1. Samples were collected in 25-foot intervals behind the onsite locations where methane LELs were detected above 0%. Offsite sampling included six GSP locations. Each gas sample was analyzed for percent methane, percent oxygen, percent carbon dioxide and methane LEL. Sampling locations are displayed on Drawing No. 1.

GAS TESTING RESULTS

Onsite Gas Testing Results

Methane gas was detected in eight locations onsite, five of which were in excess of the 25 percent LEL: GSP #13b, Well #19, GSP# 19b, GSP# 19bb, and Flare Two (F-2). (Survey results are presented in Table No. 1). A comparison of the most recent monitoring results with the historical results shows no indication of additional methane migration. Changes in onsite methane gas concentrations, since September 2006, are presented in Table No. 2 and graphically on Figure No. 1. Changes in onsite LEL, since September 2006, are presented in Table No. 3, and graphically on Figure No. 2.

OFFSITE GAS MONITORING RESULTS

During the November 17, 2010 landfill gas monitoring event, aside from GSP# 13bc, methane gas was not detected at offsite location. Methane gas was detected in the offsite location GSP# 13bc; however, during the advancement of the pre-fed rod, a hard, non-native surface was penetrated at approximately 1.5 feet below the ground surface (bgs), and although groundwater ranges between 17 and 37 feet bgs onsite, the LFG analyzer began purging water from the sample location. Additionally, the area from which the reading was taken appeared disturbed; the ground surface was dimpled and partially buried debris was scattered in the vicinity. Additionally, after further research utilizing the NJDEP online database, the site from which the elevated offsite reading was acquired from is listed as the Wickham Property/All In One Sludge Landfill (CSL ID: NJD980529937). Therefore, the elevated methane reading is not anticipated to be associated with the Subject Property, but instead to previous operations on the property from which the reading was obtained. Refer to Appendix A for information regarding the offsite property landfill information.

Field analysis results of the offsite gas survey are presented in Table No. 4. A comparison of the most recent monitoring results with the historical results indicates an overall decreasing trend of LELs. Changes in offsite methane gas concentrations, since April 2009, are presented in Table No. 5, and graphically on Figure No. 3. Changes in offsite LEL, since April 2009, are presented in Table No. 6 and graphically on Figure No. 4.

CONCLUSIONS AND RECOMMENDATIONS

Pursuant to the NJDEP letter received April 1, 2009, FPA conducted the third quarter gas monitoring event on a day with falling barometric pressure. Barometric pressure data is presented in Table No. 7. The most current quarterly gas survey indicates a decreasing trend in LELs when compared to historic surveys. LELs were not detected above the acceptable regulatory percentage in offsite sampling locations during the November 30, 2010 monitoring event.

Should you have any questions or comments, please do not hesitate to contact us.

Very truly yours,

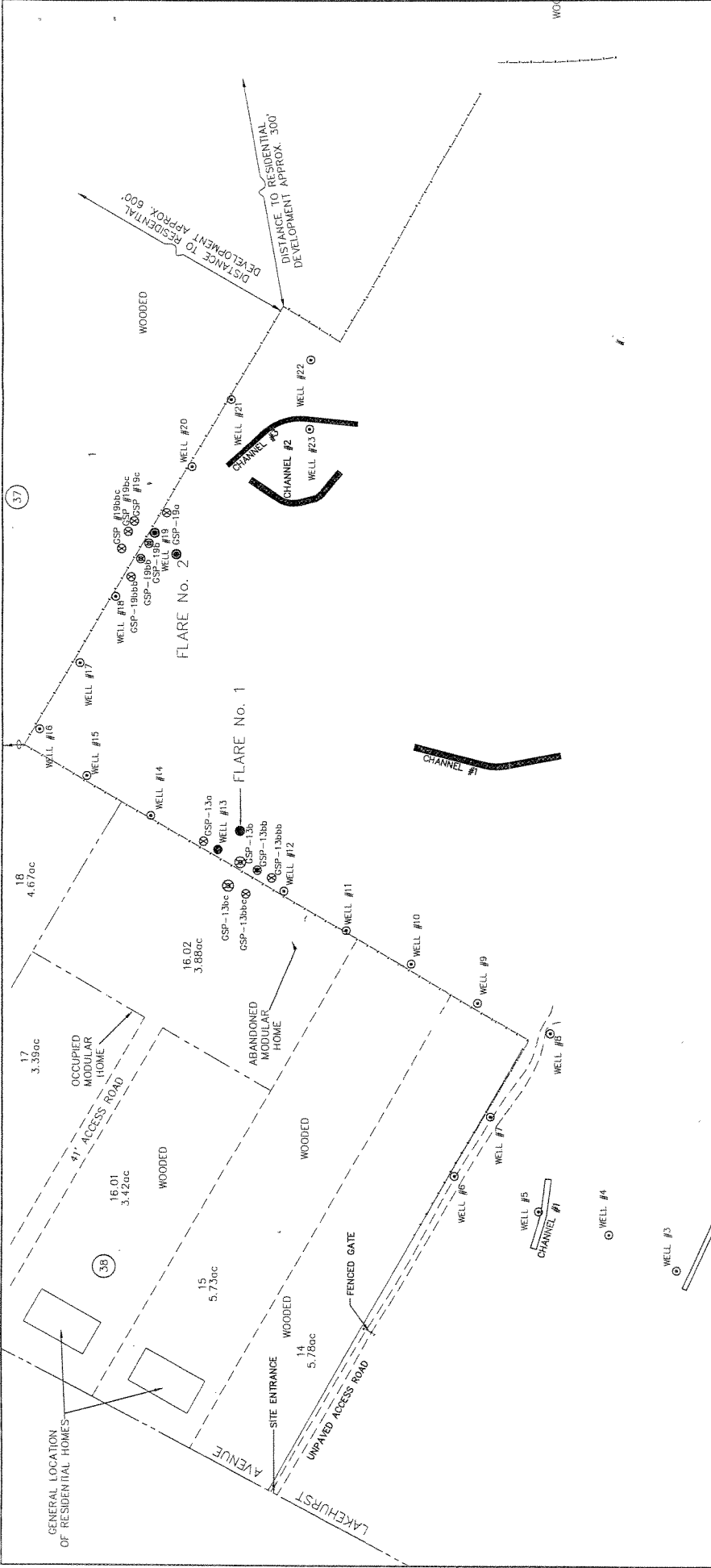
FRENCH & PARRELLO ASSOCIATES, P.A.



Bryan Heller
Environmental Scientist

cc: Dan Burke – *Jackson Township Engineer*

DRAWINGS



FRENCH & PARRELLO
ASSOCIATES, P.A., CONSULTING ENGINEERS

1800 Route 34, Suite 101 • Wall, NJ • 07719 • 732 312-9800

LEGLER LANDFILL
JACKSON TOWNSHIP
OCEAN COUNTY, NEW JERSEY

DRAWN BY: BUBH
CHECKED BY: DW
SCALE: 1" = 80'

JOB NUMBER: 08E0044
DATE: 11/17/11
DRAWING NO.: 1

LEGEND

- EXISTING FENCE
- ⊙ GAS SAMPLING WELL
- ⊙ TEMPORARY GAS SAMPLING POINT (SLAM BAR)
- ⊙ METHANE DETECTED; LOWER EXPLOSIVE LIMIT IS LESS THAN 25 PERCENT
- ⊙ METHANE CONCENTRATION EXCEEDS 25 PERCENT LOWER EXPLOSIVE LIMIT (LEL)
- ⊙ JACKSON TWP. TAX BLOCK
- ⊙ 16.01 - 1 LOT
- ⊙ 37

PRIVILEGED AND CONFIDENTIAL
ATTORNEY/CLIENT/CONSULTANT COMMUNICATION

COPYRIGHT 2011 FRENCH & PARRELLO ASSOCIATES, P.A. ALL RIGHTS RESERVED. THIS DOCUMENT IS THE PROPERTY OF FRENCH & PARRELLO ASSOCIATES, P.A. ANY REPRODUCTION OR TRANSMISSION OF THIS DOCUMENT IN ANY FORM OR BY ANY MEANS, WITHOUT THE WRITTEN PERMISSION OF FRENCH & PARRELLO ASSOCIATES, P.A., IS PROHIBITED.

TABLES

TABLE 1
NOVEMBER 17, 2011 - ONSITE GAS SURVEY RESULTS
 LEGLER LANDFILL (FACILITY No. 1511A)
 JACKSON TOWNSHIP, OCEAN COUNTY, NEW JERSEY

Well No / Gas Sampling Point	Percent Methane	Percent Lower Explosive Limit	Percent Carbon Dioxide	Percent Oxygen	Comments
Well # 1	0.0%	0.0%	0.1%	20.6%	
Well # 2	0.0%	0.0%	0.6%	20.0%	
Well # 3	0.0%	0.0%	0.5%	20.1%	
Well # 4	0.0%	0.0%	0.7%	19.7%	
Well # 5	0.0%	0.0%	0.3%	20.5%	
Well # 6	0.0%	0.0%	0.0%	21.0%	
Well # 7	0.0%	0.0%	0.0%	20.9%	
Well # 8	0.0%	0.0%	0.1%	20.9%	
Well # 9	0.0%	0.0%	0.0%	21.0%	
Well # 10	0.0%	0.0%	0.0%	21.0%	
Well # 11	0.0%	0.0%	0.1%	20.9%	
Well # 12	0.0%	0.0%	0.2%	20.1%	
Well # 13	0.3%	6.0%	0.5%	20.5%	
GSP # 13a	0.0%	0.0%	2.6%	18.5%	
GSP # 13b	1.4%	28.0%	4.0%	16.3%	
GSP # 13bb	0.2%	4.0%	3.0%	18.3%	
GSP # 13bbb	0.0%	0.0%	2.8%	18.6%	
Well # 14	0.0%	0.0%	0.2%	21.0%	
Well # 15	0.0%	0.0%	0.1%	21.2%	
Well # 16	0.0%	0.0%	0.2%	21.0%	
Well # 17	0.0%	0.0%	0.2%	21.0%	
Well # 18	0.0%	0.0%	0.4%	20.7%	
Well # 19	2.6%	52.0%	1.7%	18.5%	
GSP # 19a	0.0%	0.0%	2.5%	18.7%	
GSP # 19b	56.4%	1128.0%	22.5%	0.3%	
GSP # 19bb	53.3%	1066.0%	22.7%	0.7%	
GSP # 19bbb	0.0%	0.0%	6.6%	13.6%	
Well # 20	0.0%	0.0%	3.3%	18.0%	
Well # 21	0.0%	0.0%	3.1%	17.8%	
Well # 22	0.0%	0.0%	0.3%	20.7%	
Well # 23	0.0%	0.0%	2.0%	17.8%	
Flare (F-1)	0.3%	6.0%	3.2%	17.6%	
Flare (F-2)	14.9%	298.0%	12.7%	8.4%	

Notes:

Background methane levels approximately 0.1% methane

Bold values exceed regulatory acceptable levels (25% LEL)

TABLE 3
ONSITE LOWER EXPLOSIVE LIMITS FROM SEPTEMBER 2006 TO NOVEMBER 2011
LEGLER LANDFILL (FACILITY No. 1511A)
JACKSON TOWNSHIP, OCEAN COUNTY, NEW JERSEY

Gas Monitoring Well/ Gas Sampler Point	LEL (12-16)	LEL (3-07)	LEL (8-07)	LEL (10-07)	LEL (12-07)	LEL (3-08)	LEL (6-08)	LEL (9-08)	LEL (12-08)	LEL (2-09)	LEL (4-09)	LEL (6-09)	LEL (8-09)	LEL (9-09)	LEL (12-09)	LEL (2-10)	LEL (4-10)	LEL (6-10)	LEL (8-10)	LEL (11-10)	LEL (3-11)	LEL (7-11)	LEL (10-11)	LEL (11-11)
Well-1	0.0%	0.0%	0.0%	0.0%	0.0%	0.0%	0.0%	0.0%	0.0%	2.0%	0.0%	0.0%	0.0%	0.0%	0.0%	0.0%	0.0%	0.0%	0.0%	0.0%	0.0%	0.0%	0.0%	0.0%
Well-2	0.0%	0.0%	0.0%	0.0%	0.0%	0.0%	0.0%	0.0%	0.0%	2.0%	0.0%	0.0%	0.0%	0.0%	0.0%	0.0%	0.0%	0.0%	0.0%	0.0%	0.0%	0.0%	0.0%	0.0%
Well-3	0.0%	0.0%	0.0%	0.0%	0.0%	0.0%	0.0%	0.0%	0.0%	2.0%	0.0%	0.0%	0.0%	0.0%	0.0%	0.0%	0.0%	0.0%	0.0%	0.0%	0.0%	0.0%	0.0%	0.0%
Well-4	0.0%	0.0%	0.0%	0.0%	0.0%	0.0%	0.0%	0.0%	0.0%	2.0%	0.0%	0.0%	0.0%	0.0%	0.0%	0.0%	0.0%	0.0%	0.0%	0.0%	0.0%	0.0%	0.0%	0.0%
Well-5	0.0%	0.0%	0.0%	0.0%	0.0%	0.0%	0.0%	0.0%	0.0%	2.0%	0.0%	0.0%	0.0%	0.0%	0.0%	0.0%	0.0%	0.0%	0.0%	0.0%	0.0%	0.0%	0.0%	0.0%
Well-6	0.0%	0.0%	0.0%	0.0%	0.0%	0.0%	0.0%	0.0%	0.0%	2.0%	0.0%	0.0%	0.0%	0.0%	0.0%	0.0%	0.0%	0.0%	0.0%	0.0%	0.0%	0.0%	0.0%	0.0%
Well-7	0.0%	0.0%	0.0%	0.0%	0.0%	0.0%	0.0%	0.0%	0.0%	2.0%	0.0%	0.0%	0.0%	0.0%	0.0%	0.0%	0.0%	0.0%	0.0%	0.0%	0.0%	0.0%	0.0%	0.0%
Well-8	0.0%	0.0%	0.0%	0.0%	0.0%	0.0%	0.0%	0.0%	0.0%	2.0%	0.0%	0.0%	0.0%	0.0%	0.0%	0.0%	0.0%	0.0%	0.0%	0.0%	0.0%	0.0%	0.0%	0.0%
Well-9	0.0%	0.0%	0.0%	0.0%	0.0%	0.0%	0.0%	0.0%	0.0%	2.0%	0.0%	0.0%	0.0%	0.0%	0.0%	0.0%	0.0%	0.0%	0.0%	0.0%	0.0%	0.0%	0.0%	0.0%
Well-10	0.0%	0.0%	0.0%	0.0%	0.0%	0.0%	0.0%	0.0%	0.0%	2.0%	0.0%	0.0%	0.0%	0.0%	0.0%	0.0%	0.0%	0.0%	0.0%	0.0%	0.0%	0.0%	0.0%	0.0%
Well-11	0.0%	0.0%	0.0%	0.0%	0.0%	0.0%	0.0%	0.0%	0.0%	2.0%	0.0%	0.0%	0.0%	0.0%	0.0%	0.0%	0.0%	0.0%	0.0%	0.0%	0.0%	0.0%	0.0%	0.0%
Well-12	0.0%	0.0%	0.0%	0.0%	0.0%	0.0%	0.0%	0.0%	0.0%	2.0%	0.0%	0.0%	0.0%	0.0%	0.0%	0.0%	0.0%	0.0%	0.0%	0.0%	0.0%	0.0%	0.0%	0.0%
Well-13	0.0%	0.0%	0.0%	0.0%	0.0%	0.0%	0.0%	0.0%	0.0%	2.0%	0.0%	0.0%	0.0%	0.0%	0.0%	0.0%	0.0%	0.0%	0.0%	0.0%	0.0%	0.0%	0.0%	0.0%
Well-14	0.0%	0.0%	0.0%	0.0%	0.0%	0.0%	0.0%	0.0%	0.0%	2.0%	0.0%	0.0%	0.0%	0.0%	0.0%	0.0%	0.0%	0.0%	0.0%	0.0%	0.0%	0.0%	0.0%	0.0%
Well-15	0.0%	0.0%	0.0%	0.0%	0.0%	0.0%	0.0%	0.0%	0.0%	2.0%	0.0%	0.0%	0.0%	0.0%	0.0%	0.0%	0.0%	0.0%	0.0%	0.0%	0.0%	0.0%	0.0%	0.0%
Well-16	0.0%	0.0%	0.0%	0.0%	0.0%	0.0%	0.0%	0.0%	0.0%	2.0%	0.0%	0.0%	0.0%	0.0%	0.0%	0.0%	0.0%	0.0%	0.0%	0.0%	0.0%	0.0%	0.0%	0.0%
Well-17	0.0%	0.0%	0.0%	0.0%	0.0%	0.0%	0.0%	0.0%	0.0%	2.0%	0.0%	0.0%	0.0%	0.0%	0.0%	0.0%	0.0%	0.0%	0.0%	0.0%	0.0%	0.0%	0.0%	0.0%
Well-18	0.0%	0.0%	0.0%	0.0%	0.0%	0.0%	0.0%	0.0%	0.0%	2.0%	0.0%	0.0%	0.0%	0.0%	0.0%	0.0%	0.0%	0.0%	0.0%	0.0%	0.0%	0.0%	0.0%	0.0%
Well-19	0.0%	0.0%	0.0%	0.0%	0.0%	0.0%	0.0%	0.0%	0.0%	2.0%	0.0%	0.0%	0.0%	0.0%	0.0%	0.0%	0.0%	0.0%	0.0%	0.0%	0.0%	0.0%	0.0%	0.0%
Well-20	0.0%	0.0%	0.0%	0.0%	0.0%	0.0%	0.0%	0.0%	0.0%	2.0%	0.0%	0.0%	0.0%	0.0%	0.0%	0.0%	0.0%	0.0%	0.0%	0.0%	0.0%	0.0%	0.0%	0.0%
Well-21	0.0%	0.0%	0.0%	0.0%	0.0%	0.0%	0.0%	0.0%	0.0%	2.0%	0.0%	0.0%	0.0%	0.0%	0.0%	0.0%	0.0%	0.0%	0.0%	0.0%	0.0%	0.0%	0.0%	0.0%
Well-22 @ 5'	0.0%	0.0%	0.0%	0.0%	0.0%	0.0%	0.0%	0.0%	0.0%	2.0%	0.0%	0.0%	0.0%	0.0%	0.0%	0.0%	0.0%	0.0%	0.0%	0.0%	0.0%	0.0%	0.0%	0.0%
Well-23	0.0%	0.0%	0.0%	0.0%	0.0%	0.0%	0.0%	0.0%	0.0%	2.0%	0.0%	0.0%	0.0%	0.0%	0.0%	0.0%	0.0%	0.0%	0.0%	0.0%	0.0%	0.0%	0.0%	0.0%
Figure F-1	970.0%	114.0%	1014.0%	1014.0%	892.0%	620.0%	830.0%	660.0%	320.0%	750.0%	588.0%	630.0%	755.0%	914.0%	610.0%	566.0%	652.0%	860.0%	800.0%	299.0%	6.0%	2.0%	12.0%	6.0%
Figure F-2	970.0%	114.0%	1014.0%	1014.0%	892.0%	620.0%	830.0%	660.0%	320.0%	750.0%	588.0%	630.0%	755.0%	914.0%	610.0%	566.0%	652.0%	860.0%	800.0%	299.0%	6.0%	2.0%	12.0%	6.0%

Note:
Bold values exceed regulatory acceptable levels (25% LEL)
NS - Not Sampled

TABLE 4

NOVEMBER 17, 2011 - OFFSITE GAS SURVEY RESULTS
 LEGLER LANDFILL (FACILITY No. 1511A)
 JACKSON TOWNSHIP, OCEAN COUNTY, NEW JERSEY

Well No./ Gas Sampling Point	Percent Methane	Percent Lower Explosive Limit	Percent Carbon Dioxide	Percent Oxygen	Comments
GSP # 13c	--	--	--	--	*
GSP # 13bc	1.6%	32.0%	3.2%	18.5%	
GSP # 13bbc	0.0%	0.0%	7.8%	12.6%	
GSP # 19c	0.0%	0.0%	0.8%	20.6%	
GSP # 19bc	0.0%	0.0%	1.1%	20.3%	
GSP # 19bbc	0.0%	0.0%	1.3%	12.0%	

Notes:

* - Due to a large berm located offsite behind Well-13, sampling at the GSP # 13c location could not be conducted.
Bold values exceed regulatory acceptable levels (25% LEL)

TABLE 5
OFFSITE METHANE GAS CONCENTRATIONS FROM APRIL 2009 TO NOVEMBER 2011
 LEGLER LANDFILL (FACILITY No. 1511A)
 JACKSON TOWNSHIP, OCEAN COUNTY, NEW JERSEY

Gas Monitoring Well/ Sampling Point	Gas	% CH4 (4-09)	% CH4 (9-09)	% CH4 (12-09)	% CH4 (2-10)	% CH4 (4-10)	% CH4 (7-10)	% CH4 (11-10)	% CH4 (3-11)	% CH4 (7-11)	% CH4 (10-11)
GSP-8a (25') (GSP-8ac)		NS	NS	NS	0.0%	0.0%	NS	NS	0.0%	NS	NS
Well-10 (25')	(GSP-10c)	NS	NS	0.0%	0.0%	0.0%	NS	NS	0.0%	NS	NS
Well-12 (25')	(GSP-12c)	0.0%	0.0%	0.2%	0.0%	2.0%	0.0%	0.0%	0.0%	NS	0.0%
Well-12 (50')		NS	NS	NS	NS	0.0%	NS	NS	NS	NS	NS
Well-13 (25')	(GSP-13c)	--*	--*	--*	--*	--*	--*	--*	--*	--*	--*
GSP-13b (25')	(GSP-13bc)	NS	NS	NS	NS	NS	NS	NS	NS	NS	NS
GSP-13bb (25')	(GSP-13bbc)	NS	NS	NS	NS	NS	NS	NS	NS	NS	NS
Well-14 (25')	(GSP-14c)	NS	NS	NS	NS	NS	NS	NS	0.0%	NS	0.0%
GSP-15a (25')		NS	NS	NS	0.0%	NS	NS	NS	NS	NS	NS
Well-15 (25')	(GSP-15c)	0.0%	NS	0.0%	NS	0.0%	NS	NS	0.0%	0.0%	0.0%
GSP-16a (25')		NS	NS	0.0%	NS	NS	NS	NS	NS	NS	NS
Well-16 (25')	(GSP-16c)	NS	NS	NS	NS	NS	NS	NS	NS	NS	NS
Well-17 (25')	(GSP-17c)	0.0%	0.0%	0.0%	0.0%	0.0%	NS	NS	0.0%	NS	NS
Well-18 (25')	(GSP-18c)	NS	NS	0.1%	NS	0.0%	NS	NS	0.0%	0.0%	0.0%
GSP-18a (25')		NS	NS	NS	NS	NS	NS	NS	NS	0.0%	NS
Well-19 (25')	(GSP # 19c)	0.0%	0.0%	0.1%	0.0%	0.0%	0.0%	0.0%	NS	0.0%	NS
GSP-19a (25')	(GSP # 19ac)	NS	NS	NS	NS	NS	NS	0.0%	NS	0.0%	0.0%
GSP-19aa (25')	(GSP # 19aac)	NS	NS	NS	NS	NS	NS	NS	NS	NS	0.0%
GSP-19b (25')	(GSP # 19bc)	NS	NS	NS	NS	NS	NS	NS	NS	NS	0.0%
GSP-19bb (25')	(GSP # 19bbc)	NS	NS	NS	NS	NS	0.0%	0.0%	0.0%	0.0%	0.0%
GSP-19bbb (25')	(GSP # 19bbbc)	NS	NS	NS	NS	NS	NS	0.0%	0.0%	0.0%	0.0%
GSP-19bbbb (25')	(GSP # 19bbbbc)	NS	NS	NS	NS	NS	NS	0.0%	NS	0.0%	0.0%

Notes:
 -- - Not Sampled
 * - Due to a large berm located offsite behind Well-13, sampling at the GSP-13 (25') location could not be
 NS - On-site readings were 0.0% during this event; therefore, no offsite readings were required.

TABLE 6
 OFFSITE LOWER EXPLOSIVE LIMITS FROM APRIL 2009 TO NOVEMBER 2011
 LEGLER LANDFILL (FACILITY No. 1511A)
 JACKSON TOWNSHIP, OCEAN COUNTY, NEW JERSEY

Gas Monitoring Well/ Gas Sampling Point	LEL (4-09)	LEL (9-09)	LEL (12-09)	LEL (2-10)	LEL (4-10)	LEL (7-10)	LEL (11-10)	LEL (3-11)	LEL (7-11)	LEL (10-11)	LEL (11-11)
GSP-8a (25) (GSP-8ac)	NS	NS	NS	0.0%	0.0%	NS	NS	0.0%	NS	NS	NS
Well-10 (25) (GSP-10c)	NS	NS	0.0%	0.0%	0.0%	NS	NS	0.0%	NS	0.0%	NS
Well-12 (25) (GSP-12c)	0.0%	0.0%	1.0%	0.0%	40.0%	0.0%	0.0%	0.0%	NS	0.0%	NS
Well-12 (50')	NS	NS	NS	NS	0.0%	NS	NS	NS	NS	NS	NS
Well-13 (25) (GSP-13c)	**	**	**	**	**	**	**	**	**	**	**
GSP-13b (25) (GSP-13bc)	NS	NS	NS	NS	NS	NS	NS	NS	NS	NS	32.0%**
GSP-13bb (25) (GSP-13bbc)	NS	NS	NS	NS	NS	NS	NS	NS	NS	NS	0.0%
Well-14 (25) (GSP-14c)	NS	NS	NS	NS	NS	NS	NS	0.0%	NS	0.0%	NS
GSP-15a (25)	NS	NS	NS	0.0%	NS	NS	NS	NS	NS	NS	NS
Well-15 (25) (GSP-15c)	0.0%	NS	NS	NS	0.0%	NS	NS	0.0%	0.0%	0.0%	NS
Well-16 (25) (GSP-16c)	NS	NS	0.0%	NS	0.0%	NS	NS	0.0%	NS	NS	NS
Well-17 (25) (GSP-17c)	0.0%	0.0%	0.0%	0.0%	0.0%	NS	NS	0.0%	NS	NS	NS
Well-18 (25) (GSP-18c)	NS	NS	1.0%	NS	0.0%	NS	NS	0.0%	0.0%	0.0%	NS
GSP-18a (25) (GSP-18ac)	NS	NS	NS	NS	NS	NS	NS	0.0%	NS	NS	NS
GSP-18b (25) (GSP-18bc)	NS	NS	NS	NS	NS	NS	NS	0.0%	NS	NS	NS
Well-19 (25) (GSP-19c)	0.0%	0.0%	0.0%	0.0%	0.0%	0.0%	0.0%	0.0%	0.0%	0.0%	0.0%
GSP-19a (25) (GSP-19ac)	NS	NS	NS	NS	NS	NS	NS	NS	NS	NS	NS
GSP-19aa (25) (GSP-19aac)	NS	NS	NS	NS	NS	NS	NS	NS	0.0%	0.0%	NS
GSP-19b (25) (GSP-19bc)	NS	NS	NS	NS	NS	NS	NS	NS	NS	0.0%	NS
GSP-19bb (25) (GSP-19bbc)	NS	NS	NS	NS	NS	0.0%	0.0%	0.0%	0.0%	0.0%	0.0%
GSP-19bbb (25) (GSP-19bbbc)	NS	NS	NS	NS	NS	NS	NS	0.0%	0.0%	0.0%	0.0%
GSP-19bbbb (25) (GSP-19bbbbc)	NS	NS	NS	NS	NS	NS	NS	NS	0.0%	0.0%	NS

Note:
 NS - Not Sampled
Bold values exceed regulatory acceptable levels (25% LEL)
 * - Due to a large berm located offsite behind Well-13, sampling at the GSP-13 (25') location could not be
 ** - On-site readings were 0.0% at GSP-15; therefore, no offsite readings

TABLE 7
MARCH 2011 - BAROMETRIC PRESSURE DATA
 LEGLER LANDFILL (FACILITY No. 1511A)
 JACKSON TOWNSHIP, OCEAN COUNTY, NEW JERSEY

Weather Station Location	State	Date & Time	Time Interval	Temperature	Precipitation	Wind Speed	Wind Direction	Barometric Pressure
Cream Ridge	NJ	11/16/2011 10:00	24 hours prior	56	0.01	3	ESE	29.82
Cream Ridge	NJ	11/16/2011 22:00	12 hours prior	54	0.03	3	N	29.7
Cream Ridge	NJ	11/17/2011 0:00	10 hours prior	53	0.01	2	NNW	29.72
Cream Ridge	NJ	11/17/2011 2:00	8 hours prior	51	0	0	NW	29.75
Cream Ridge	NJ	11/17/2011 4:00	6 hours prior	50	0	5	NW	29.78
Cream Ridge	NJ	11/17/2011 6:00	4 hours prior	49	0	7	N	29.79
Cream Ridge	NJ	11/17/2011 8:00	2 hours prior	44	0	5	NNW	29.82
Cream Ridge	NJ	11/17/2011 10:00	During Monitoring	44	0	7	N	29.83
Cream Ridge	NJ	11/17/2011 11:00	During Monitoring	45	0	9	NNW	29.82
Cream Ridge	NJ	11/17/2011 12:00	During Monitoring	43	0	17	NNW	29.81
Cream Ridge	NJ	11/17/2011 13:00	During Monitoring	39	0.05	12	NNW	29.82
Cream Ridge	NJ	11/17/2011 14:00	During Monitoring	39	0.01	0	NW	29.82
Cream Ridge	NJ	11/17/2011 15:00	During Monitoring	40	0	0	ENE	29.81
Cream Ridge	NJ	11/17/2011 16:00	During Monitoring	40	0	0	W	29.82

Notes:

Bold Cells indicate the times which FPA conducted the gas monitoring event

FIGURES

Methane Percentages

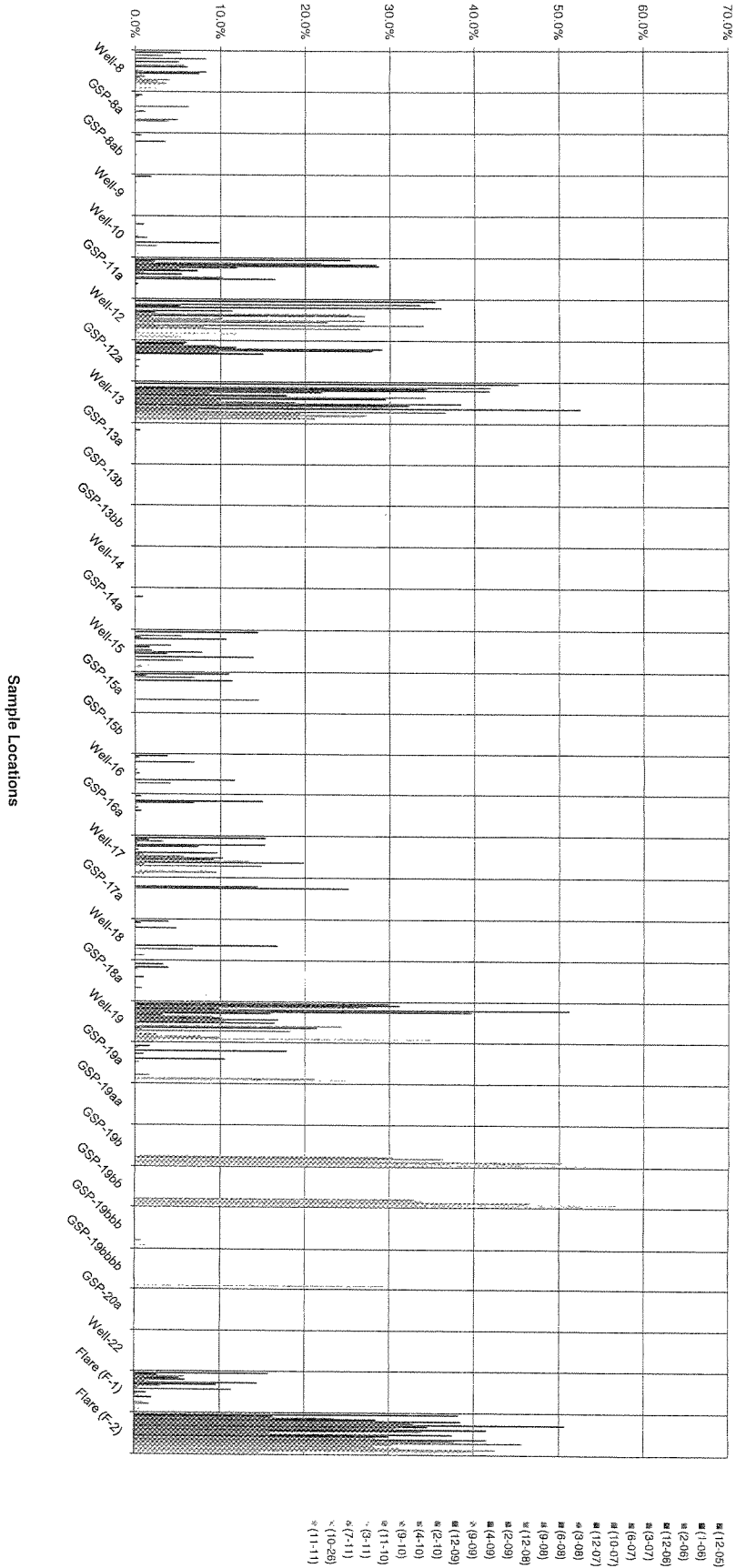


Figure 1
Changes in Onsite Methane Concentrations

Sample Dates

Percent Lower Explosive Limits

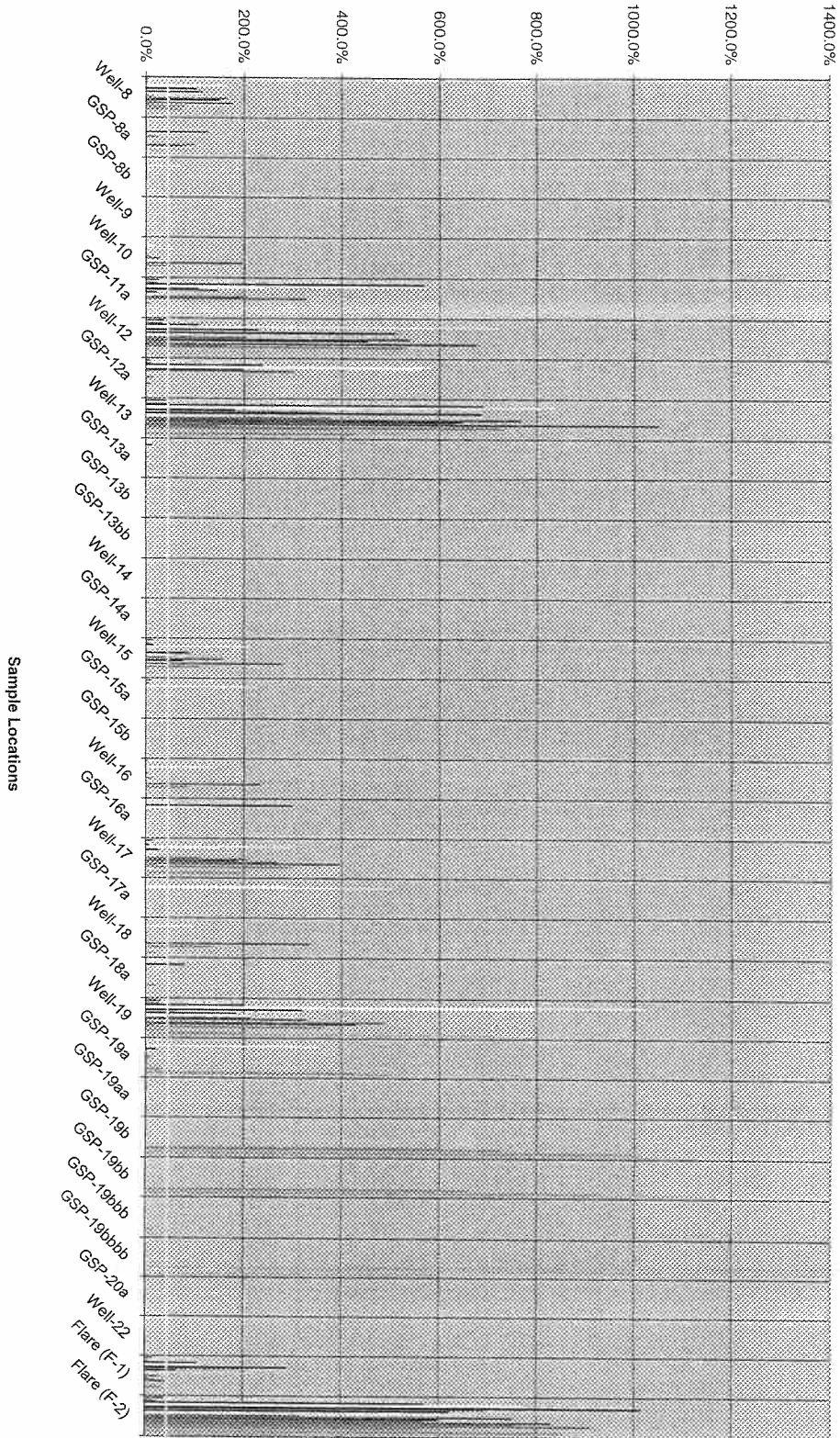
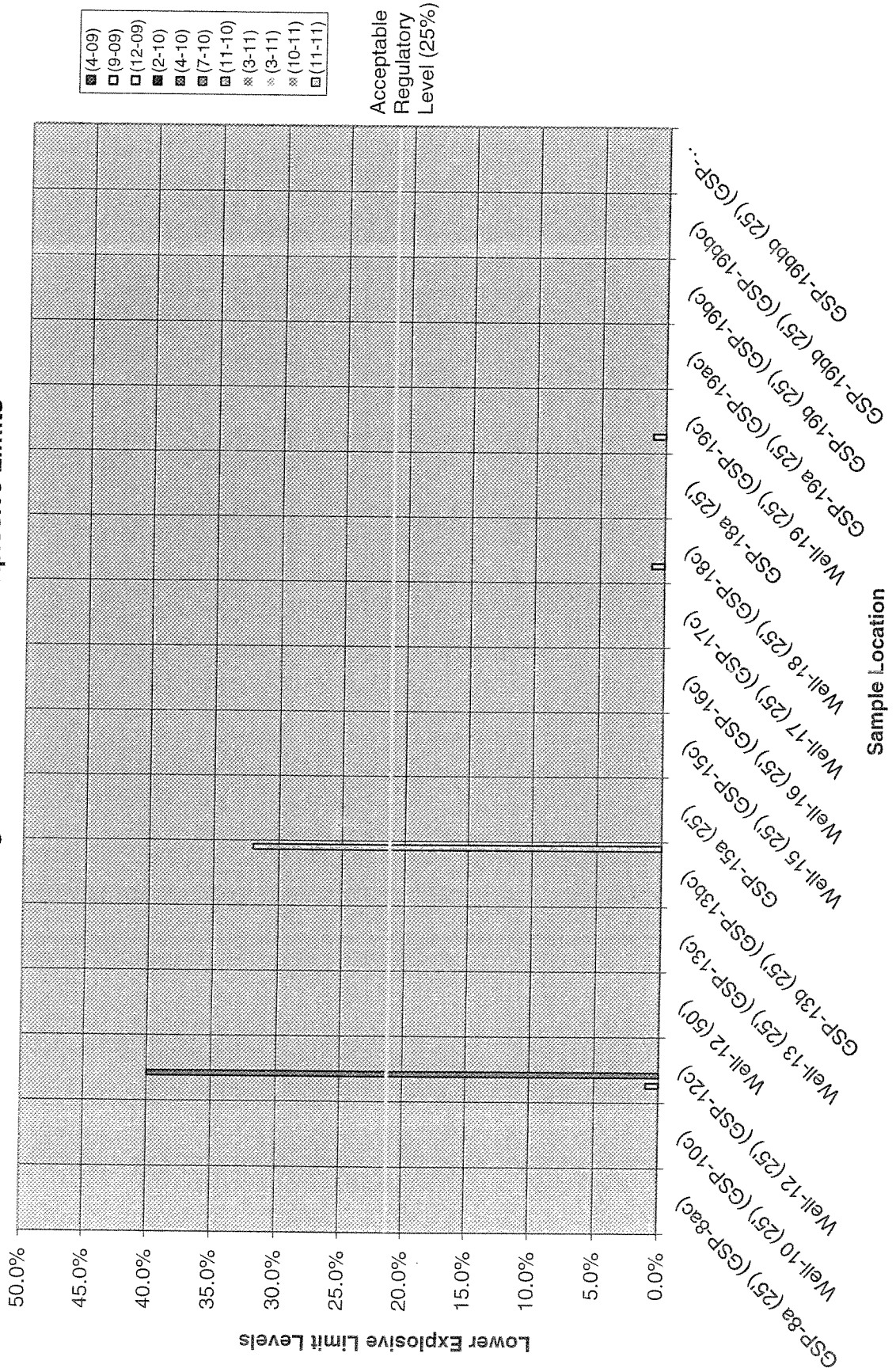


Figure 2
Changes in Onsite Lower Explosive Limits

- ▲ LEL (12-05)
- LEL (1-06)
- LEL (2-06)
- LEL (12-06)
- LEL (3-07)
- LEL (6-07)
- LEL (10-07)
- LEL (12-07)
- LEL (3-08)
- ▼ LEL (6-08)
- ▼ LEL (9-08)
- ▲ LEL (12-08)
- LEL (2-09)
- LEL (4-09)
- LEL (9-09)
- LEL (12-09)
- LEL (2-10)
- LEL (4-10)
- LEL (9-10)
- LEL (11-10)
- ▼ LEL (3-11)
- LEL (7-11)
- ▲ LEL (10-11)
- ▲ LEL (11-11)

Acceptable Regulatory Level (25%)

Figure 4
Changes in Offsite Lower Explosive Limits



- (4-09)
- (9-09)
- (12-09)
- (2-10)
- (4-10)
- (7-10)
- (11-10)
- ※ (3-11)
- ※ (3-11)
- ※ (10-11)
- (11-11)

APPENDIX A

New Jersey Landfill Location/Status Search Results

*DEP Bureau Allocation contacts, North phone (609)292-9880 South phone (609)984-6985



[Help with using this look up screen](#)

Your search for :

Landfill Name is equal to "Wickham"

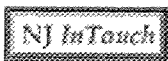
County is equal to - "Any County"

generated 1 match.

Project Manager:	S. Ali
Landfill Name :	WICKHAM PROPERTY/ALL IN ONE SLUDGE
County :	OCEAN
Old ID:	
New ID:	
CSL ID:	NJD980529937
Street Address:	LAKEHURST AVE.
Municipality:	JACKSON TWP
Block Number:	
Lot Number:	
Private (P) or Government (G):	P
NPL (Super Fund)(T=Yes,F=No):	F
Commercial (C) or Sole Source (S):	
Pinelands:	
Watershed Zone:	13
Operating Status:	NOT OPEN
Date Closed:	0
NJPDES Number:	
Acreage:	0
Waste Types Accepted:	-
Properly Closed(T=Yes,F=No):	F



[Return to Search](#)



[site search](#) [reports by category](#) [reports search](#) [help](#)



PI by ALT ID & Program

NJD980529937 & ALL
(Sites)

[1 to 1 of 1]

Program

Site Remediation


PI ID	NAME	ACTIVE	ADDRESS			TYPE	REPORTS
			[street name]	[municipality]	[zip]		
G000004550	A ALL IN ONE SERVICES	Yes	885 LAKEHURST AVE, Jackson Twp, NJ 08527	SRP-PI	SRP Site Detail	 	

<1>

Site Detail Report

Run Date: 11/21/11 7:50 am

66296- A ALL IN ONE SERVICES

PI Number	PI Name	County	Municipality	Activity #	Document Type	Document Status	Document Title	More Info	Cea Fact Sheet
G000004550	A ALL IN ONE SERVICES	Ocean	Jackson Twp	TBC000001	Case Oversight	Pending	A ALL IN ONE SERVICES	 Case Oversight Info	


[Activity Tracking](#)

SRP CASE OVERSIGHT REPORT A ALL IN ONE SERVICES

, NJ

PI Number	G000004550
Activity Number	TBC000001
Bureau	NONE
Document Title	A ALL IN ONE SERVICES
Case Status	To Be Assessed
Case Status Date	6/27/1995
Confirm Contamination	Undetermined
Case Manager	KLOO, KENNETH
Phone	(609) 584 - 4271

Remedial Level	Start Date	End Date
U: Not Yet Determined	6/27/1995	

Case Types	Start Date	End Date
To Be Assessed	6/27/1995	

Activity Tracking Report

11/21/11 7:50 am

A ALL IN ONE SERVICES

PI Number: G000004550

PFR 000001

Activity Class Description:	Publicly Funded Remediation
Activity Type Description:	Preliminary Assessment

Assigned To	Description	Completed Date	Activity Class Description	Activity Type Description	PI Number
DeCicco, Anne	Preliminary Assessment Completed	4/18/1984	Publicly Funded Remediation	Preliminary Assessment	G000004550
DeCicco, Anne	Preliminary Assessment Started	4/18/1984	Publicly Funded Remediation	Preliminary Assessment	G000004550

PFR 000002

Activity Class Description:	Publicly Funded Remediation
Activity Type Description:	Site Investigation

Assigned To	Description	Completed Date	Activity Class Description	Activity Type Description	PI Number
Pleva, Al	Site Investigation Completed	4/29/1985	Publicly Funded Remediation	Site Investigation	G000004550
Pleva, Al	Site Investigation Started	4/29/1985	Publicly Funded Remediation	Site Investigation	G000004550