



June 5, 2012

Ms. Saara Ali
Bureau of Landfill and Recycling Management
NJDEP – DIVISION OF SOLID AND HAZARDOUS WASTE
401 East State Street, P.O. Box 414
Trenton, New Jersey 08625-0414

Re: Quarterly Landfill Gas Survey –2nd Quarter 2012
Legler Landfill, Facility No. 1511A
Jackson Township, Ocean County, New Jersey
FPA No. 08E004A

Dear Ms. Ali:

INTRODUCTION

This report presents the testing procedures and analytical results of the Quarterly Landfill Gas (LFG) survey conducted by French & Parrello Associates, P.A. (FPA) on May 15, 2012, at Legler Landfill and surrounding properties, Jackson Township, Ocean County, New Jersey. The subject landfill is identified as New Jersey Department of Environmental Protection (NJDEP) Facility No. 1511A.

BACKGROUND

As part of the Closure and Post-Closure Plan Approval dated February 21, 1996, and Corrective Action Plan dated March 2002, methane gas surveys are to be conducted around the landfill perimeter to monitor potential lateral, offsite gas migration. Since 2000, methane gas concentrations have increased in the western portion and southwestern corner of the landfill. As a result, the NJDEP directed Jackson Township to perform quarterly offsite gas surveys to monitor methane gas migration.

Pursuant to the NJDEP letter received April 1, 2009, monitoring is required to be conducted during days of falling barometric pressure in order to accurately monitor gas migration. Barometric pressure data was gathered from the Rutgers Weather and Climate Network station located in Cream Ridge, NJ, approximately 13.5 miles from the Subject Property. Additionally, pursuant to the NJDEP letter dated June 23, 2010, the delineation protocol has been modified. Gas sampling points between each well are no longer required; however, whenever methane gas is detected within one of the onsite gas monitoring wells, three additional sampling points are required.

One point is required 25 feet on either side of the well and the third point is required 25 feet behind (offsite) of the well. In the event methane gas is detected in one of the delineation samples, the same delineation protocol is to be used until methane gas is no longer detected. Delineation samples were collected on the boundary of Block 37, Lot 1, and Block 38, Lot 16.02, and expanded outward from the onsite sampling points.

LANDFILL GAS TESTING PROCEDURES

Gas sampling was performed at 54 gas sampling locations: 23 gas monitoring wells, 29 temporary gas sampling points (GSPs) and two flares. The wells were sampled immediately after removing the locked, metal protective caps by inserting dedicated three-foot, 3/16-inch, white polyethylene tubing through pre-drilled holes in the plastic well caps. The tubing was attached to the LANDTEC GEM-2000 Gas Extraction Monitor (GEM-2000) which instantaneously analyzed the LFG. GSP samples were collected utilizing an AMS Soil Sampling Kit. A slam bar and soil gas probe were utilized to penetrate the soil to an approximate depth of two and one-half feet. Dedicated 3/16-inch inside diameter, polyethylene tubing was pre-fed through the probe, and the GEM-2000 was utilized to instantaneously analyze LFG. GSPs are located primarily along the property boundary 25 feet on each side of the wells containing detectable concentrations of methane gas. On February 4, 2008, four-inch PVC ball valves equipped with fabricated conversion nipples, were installed on the Flares. These valves ensure a sealed connection to the LANDTECH GEM-2000 while sampling.

Offsite gas sampling was conducted on Block 38, Lots 16.02 and 18, as well as Block 37, Lot 1. Samples were collected in 25-foot intervals behind the onsite locations where methane LELs were detected above 0%. Offsite sampling included 11 GSP locations. Each gas sample was analyzed for percent methane, percent oxygen, percent carbon dioxide and methane LEL. Sampling locations are displayed on Drawing No. 1.

GAS TESTING RESULTS

Onsite Gas Testing Results

Methane gas was detected in 15 locations onsite, 11 of which were in excess of the 25 percent LEL: Well #8, Well #13, GSP #13b, Well #15, Well #17, GSP #18a, Well #19, GSP #19b, GSP #19bb, GSP #19bbb, and Flare Two (F-2). (Survey results are presented in Table No. 1). A comparison of the most recent monitoring results with the historical results shows no indication of additional methane migration. Changes in onsite methane gas concentrations, since September 2006, are presented in Table No. 2 and graphically on Figure No. 1. Changes in onsite LEL, since September 2006, are presented in Table No. 3, and graphically on Figure No. 2.



OFFSITE GAS MONITORING RESULTS

During the May 15, 2012 landfill gas monitoring event, methane gas was not detected at offsite locations. Field analysis results of the offsite gas survey are presented in Table No. 4. A comparison of the most recent monitoring results with the historical results indicates an overall decreasing trend of LELs. Changes in offsite methane gas concentrations, since April 2009, are presented in Table No. 5, and graphically on Figure No. 3. Changes in offsite LEL, since April 2009, are presented in Table No. 6 and graphically on Figure No. 4.

CONCLUSIONS AND RECOMMENDATIONS

Pursuant to the NJDEP letter received April 1, 2009, FPA conducted the first quarter gas monitoring event on a day with falling barometric pressure. Barometric pressure data is presented in Table No. 7. The most current quarterly gas survey indicates a decreasing trend in LELs when compared to historic surveys. LELs were not detected above the acceptable regulatory percentage in offsite sampling locations during the May 15, 2012 monitoring event.

Should you have any questions or comments, please do not hesitate to contact us.

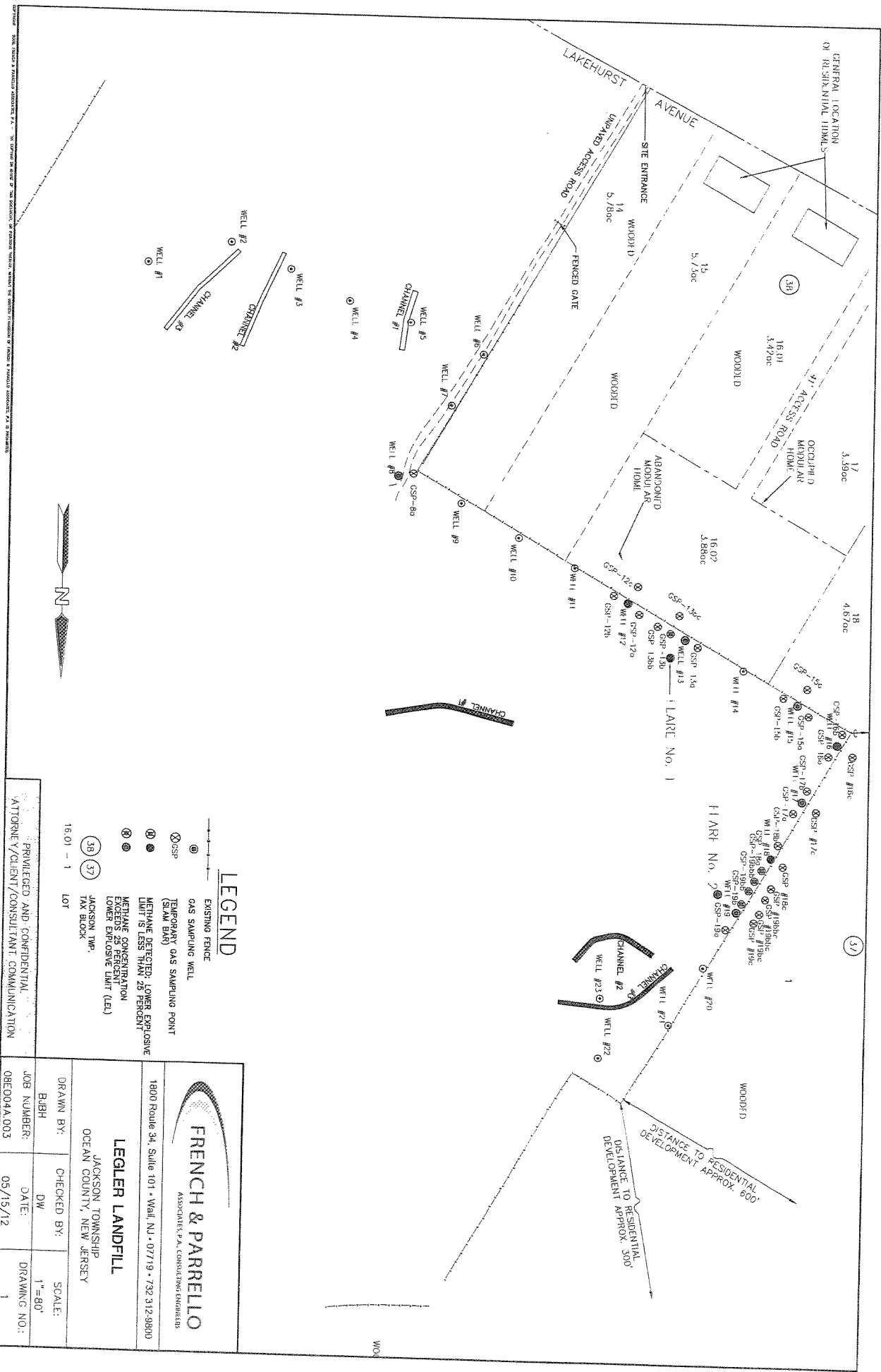
Very truly yours,

FRENCH & PARRELLO ASSOCIATES, P.A.

Bryan Heller
Environmental Scientist

cc: Dan Burke – *Jackson Township Engineer*

DRAWINGS



LEGEND

- ⊕ EXISTING FENCE
- ⊕ GAS SAMPLING WELL
- ⊕ TEMPORARY GAS SAMPLING POINT (SLAM BAR)
- ⊕ METHANE DETECTED: LOWER EXPLOSIVE LIMIT IS LESS THAN 25 PERCENT
- ⊕ METHANE CONCENTRATION EXCEEDS 25 PERCENT
- ⊕ LOWER EXPLOSIVE LIMIT (LEL)
- ⊕ JACKSON TWP.
- ⊕ TAX BLOCK

16.01 - 1

LOT

LEGALER LANDFILL

JACKSON TOWNSHIP
OCEAN COUNTY, NEW JERSEY

FRENCH & PARELLO
ASSOCIATES P.A., CONSULTING ENGINEERS
1800 Route 34, Suite 101 • Wall, NJ • 07719 • 732.312.9800

DRAWN BY:	CHECKED BY:	SCALE:
BJBH	DW	1"=80'
JOB NUMBER:	DATE:	DRAWING NO.:
08E004A.003	05/15/12	1

PRIVILEGED AND CONFIDENTIAL
ATTORNEY/CLIENT/CONSULTANT COMMUNICATION

DATE PLOTTED: 05/15/12 10:00 AM

TABLES

TABLE 1
MAY 15, 2012 - ONSITE GAS SURVEY RESULTS
LEGLER LANDFILL (FACILITY No. 1511A)
JACKSON TOWNSHIP, OCEAN COUNTY, NEW JERSEY

Well No./ Gas Sampling Point	Percent Methane	Percent Lower Explosive Limit	Percent Carbon Dioxide	Percent Oxygen	Comments
Well # 1	0.0%	0.0%	0.4%	19.3%	
Well # 2	0.0%	0.0%	2.4%	18.0%	
Well # 3	0.0%	0.0%	0.4%	19.9%	
Well # 4	0.0%	0.0%	3.2%	16.4%	
Well # 5	0.0%	0.0%	2.8%	16.1%	
Well # 6	0.0%	0.0%	1.5%	17.7%	
Well # 7	0.0%	0.0%	3.3%	15.1%	
Well # 8	6.4%	128.0%	12.9%	3.4%	
GSP #8a	0.0%	0.0%	7.9%	8.7%	
Well # 9	0.0%	0.0%	7.5%	8.5%	
Well # 10	0.0%	0.0%	9.7%	7.7%	
Well # 11	0.0%	0.0%	4.9%	15.8%	
Well # 12	0.6%	12.0%	13.9%	3.0%	
GSP # 12a	0.0%	0.0%	0.5%	19.5%	
GSP # 12b	0.0%	0.0%	1.4%	20.1%	
Well # 13	31.5%	630.0%	19.5%	0.0%	
GSP # 13a	0.0%	0.0%	2.3%	18.5%	
GSP # 13b	2.5%	50.0%	4.9%	15.4%	
GSP # 13bb	0.0%	0.0%	9.6%	7.4%	
Well # 14	0.0%	0.0%	11.3%	7.6%	
Well # 15	5.3%	106.0%	18.1%	0.2%	
GSP # 15a	0.0%	0.0%	2.2%	19.0%	
GSP # 15b	0.0%	0.0%	1.9%	18.8%	
Well # 16	0.5%	10.0%	11.5%	5.5%	
GSP # 16a	0.0%	0.0%	2.7%	18.1%	
GSP # 16b	0.0%	0.0%	3.3%	16.7%	
Well # 17	9.9%	198.0%	16.7%	0.3%	
GSP # 17a	0.0%	0.0%	5.0%	15.8%	
GSP # 17b	0.0%	0.0%	1.0%	19.7%	
Well # 18	0.3%	6.0%	15.2%	1.2%	
GSP # 18a	15.9%	318.0%	17.7%	1.8%	Delineation connects to GSP # 19bbb.
GSP # 18b	0.0%	0.0%	2.5%	18.4%	
Well # 19	16.9%	338.0%	18.9%	0.0%	
GSP # 19a	0.0%	0.0%	3.5%	15.2%	
GSP # 19b	9.2%	184.0%	8.7%	11.5%	
GSP # 19bb	47.3%	946.0%	19.4%	0.1%	
GSP # 19bbb	20.7%	414.0%	18.6%	0.8%	
Well # 20	0.0%	0.0%	6.2%	13.3%	
Well # 21	0.0%	0.0%	3.3%	18.2%	
Well # 22	0.0%	0.0%	0.3%	20.4%	
Well # 23	0.0%	0.0%	6.9%	10.0%	
Flare (F-1)	0.9%	18.0%	6.5%	12.1%	
Flare (F-2)	40.0%	800.0%	23.5%	0.2%	

Notes:
Background methane levels approximately 0.1% methane
Bold values exceed regulatory acceptable levels (25% LEL)

TABLE 4
MAY 15, 2012 - OFFSITE GAS SURVEY RESULTS
 LEGLER LANDFILL (FACILITY No. 1511A)
 JACKSON TOWNSHIP, OCEAN COUNTY, NEW JERSEY

Well No. / Gas Sampling Point	Percent Methane	Percent Lower Explosive Limit	Percent Carbon Dioxide	Percent Oxygen	Comments
GSP # 12c	0.0%	0.0%	7.8%	8.9%	
GSP # 13c	--	--	--	--	*
GSP # 13bc	0.0%	0.0%	6.8%	10.3%	
GSP # 15c	0.0%	0.0%	7.6%	9.3%	
GSP # 16c	0.0%	0.0%	3.2%	16.8%	
GSP # 17c	0.0%	0.0%	2.8%	16.3%	
GSP # 18c	0.0%	0.0%	3.4%	15.7%	
GSP # 18ac	0.0%	0.0%	2.7%	15.8%	
GSP # 19c	0.0%	0.0%	5.6%	15.7%	
GSP # 19bc	0.0%	0.0%	3.8%	15.2%	
GSP # 19bbc	0.0%	0.0%	4.7%	12.5%	
GSP # 19bbbc	0.0%	0.0%	3.9%	15.6%	

Notes:

* - Due to a large berm located offsite behind Well-13, sampling at the GSP # 13c location could not be conducted.
Bold values exceed regulatory acceptable levels (25% LEL)

TABLE 5
 OFF-SITE METHANE GAS CONCENTRATIONS FROM APRIL 2009 TO MAY 2012
 LEGLER LANDFILL (FACILITY No. 1511A)
 JACKSON TOWNSHIP, OCEAN COUNTY, NEW JERSEY

Site Monitoring Well/ Sampling Point	Case	% CH4 (4-08)	% CH4 (6-09)	% CH4 (10-09)	% CH4 (2-10)	% CH4 (6-10)	% CH4 (7-10)	% CH4 (11-10)	% CH4 (3-11)	% CH4 (7-11)	% CH4 (10-11)	% CH4 (11-11)	% CH4 (3-12)	% CH4 (5-12)
GSP-8a (25) (GSP-8ac)	NS	NS	NS	NS	0.0%	0.0%	NS	NS	0.0%	NS	NS	NS	NS	NS
Well-10 (25) (GSP-10c)	NS	NS	NS	NS	0.0%	0.0%	NS	NS	0.0%	NS	NS	NS	NS	NS
Well-12 (25) (GSP-12c)	0.0%	0.0%	0.2%	0.0%	0.0%	2.0%	0.0%	0.0%	0.0%	NS	0.0%	NS	0.0%	0.0%
Well-12 (50)	NS	NS	NS	NS	NS	0.0%	NS	NS	NS	NS	NS	NS	NS	NS
Well-13 (25) (GSP-13c)	NS	NS	NS	NS	NS	NS	NS	NS	NS	NS	NS	NS	NS	NS
GSP-13b (25) (GSP-13bc)	NS	NS	NS	NS	NS	NS	NS	NS	NS	NS	NS	NS	NS	NS
GSP-13bb (25) (GSP-13bbc)	NS	NS	NS	NS	NS	NS	NS	NS	NS	NS	NS	NS	NS	NS
Well-14 (25) (GSP-14c)	NS	NS	NS	NS	NS	NS	NS	NS	NS	NS	NS	NS	NS	NS
GSP-15a (25)	NS	NS	NS	NS	NS	NS	NS	NS	NS	NS	NS	NS	NS	NS
Well-15 (25) (GSP-15c)	0.0%	0.0%	NS	NS	NS	0.0%	NS	NS	NS	NS	NS	NS	NS	NS
GSP-16a (25)	NS	NS	NS	NS	NS	NS	NS	NS	NS	NS	NS	NS	NS	NS
Well-16 (25) (GSP-16c)	NS	NS	NS	NS	NS	0.0%	NS	NS	NS	NS	NS	NS	NS	NS
Well-17 (25) (GSP-17c)	0.0%	NS	0.0%	NS	NS	0.0%	NS	NS	NS	NS	NS	NS	NS	NS
Well-18 (25) (GSP-18c)	NS	NS	NS	NS	NS	NS	NS	NS	NS	NS	NS	NS	NS	NS
GSP-18a (25)	NS	NS	NS	NS	NS	NS	NS	NS	NS	NS	NS	NS	NS	NS
Well-19 (25) (GSP-19c)	0.0%	0.0%	0.1%	NS	NS	0.0%	0.0%	0.0%	0.0%	0.0%	0.0%	0.0%	0.0%	0.0%
GSP-19a (25) (GSP-19ac)	NS	NS	NS	NS	NS	NS	NS	NS	NS	NS	NS	NS	NS	NS
GSP-19aa (25) (GSP-19aac)	NS	NS	NS	NS	NS	NS	NS	NS	NS	NS	NS	NS	NS	NS
GSP-19b (25) (GSP-19bc)	NS	NS	NS	NS	NS	NS	NS	NS	NS	NS	NS	NS	NS	NS
GSP-19bb (25) (GSP-19bbc)	NS	NS	NS	NS	NS	NS	NS	NS	NS	NS	NS	NS	NS	NS
GSP-19bbb (25) (GSP-19bbbc)	NS	NS	NS	NS	NS	NS	NS	NS	NS	NS	NS	NS	NS	NS
GSP-19bbbb (25) (GSP-19bbbbc)	NS	NS	NS	NS	NS	NS	NS	NS	NS	NS	NS	NS	NS	NS

Notes:
 -- Not Sampled
 * - Due to a large berm located offsite behind Well-13, sampling at the GSP-13 (25) location could not be
 NS - On-site readings were 0.0% during this event; therefore, no offsite readings were required
 ** - While driving the pre-led rod into the ground, the EPA representative felt the rod penetrate a hard, non-native material, and during the collection of the reading, liquid began to purge into the landfill gas analyzer. During onsite groundwater monitoring events, EPA has noted the
 groundwater to be located approximately between 17 and 37 feet below the ground surface; however, the rod was only approximately 3 feet below the ground surface. Additionally, the ground surface appeared disturbed with several dimples and buried debris located in the vicinity of the
 GSP location.

TABLE 6
 OFFSITE LOWER EXPLOSIVE LIMITS FROM APRIL 2009 TO MAY 2012
 LEGLER LANDFILL (FACILITY No. 1511A)
 JACKSON TOWNSHIP, OCEAN COUNTY, NEW JERSEY

Gas Monitoring Well/ Gas Sampling Point	LEL (4-08)	LEL (9-09)	LEL (12-09)	LEL (2-10)	LEL (4-10)	LEL (7-10)	LEL (11-10)	LEL (3-11)	LEL (7-11)	LEL (10-11)	LEL (3-12)	LEL (5-12)
GSP-8a (25) (GSP-8ac)	NS	NS	NS	0.0%	0.0%	NS	NS	0.0%	NS	NS	NS	NS
Well-10 (25) (GSP-10c)	NS	NS	0.0%	0.0%	0.0%	NS	NS	0.0%	NS	NS	NS	NS
Well-12 (25) (GSP-12c)	0.0%	0.0%	1.0%	0.0%	40.0%	0.0%	0.0%	0.0%	NS	0.0%	NS	NS
Well-12 (50)	NS	NS	NS	NS	0.0%	NS	NS	NS	NS	NS	NS	0.0%
Well-13 (25) (GSP-13c)	--	--	--	--	--	--	--	--	--	--	--	--
GSP-13b (25) (GSP-13bc)	NS	NS	NS	NS	NS	NS	NS	NS	NS	NS	NS	NS
GSP-13bb (25) (GSP-13bbc)	NS	NS	NS	NS	NS	NS	NS	NS	NS	NS	NS	NS
Well-14 (25) (GSP-14c)	NS	NS	NS	NS	NS	NS	NS	0.0%	NS	0.0%	NS	NS
GSP-15a (25)	NS	NS	NS	NS	NS	NS	NS	NS	NS	NS	NS	NS
Well-15 (25) (GSP-15c)	0.0%	NS	NS	NS	0.0%	NS	NS	0.0%	0.0%	0.0%	NS	NS
Well-16 (25) (GSP-16c)	NS	NS	NS	NS	NS	NS	NS	NS	NS	NS	NS	NS
Well-17 (25) (GSP-17c)	NS	NS	NS	NS	NS	NS	NS	NS	NS	NS	NS	NS
Well-18 (25) (GSP-18c)	0.0%	0.0%	0.0%	0.0%	0.0%	NS	NS	0.0%	NS	NS	NS	0.0%
Well-18a (25) (GSP-18ac)	NS	NS	1.0%	NS	0.0%	NS	NS	0.0%	NS	0.0%	NS	0.0%
GSP-18b (25) (GSP-18bc)	NS	NS	NS	NS	0.0%	NS	NS	0.0%	NS	NS	NS	0.0%
Well-19 (25) (GSP-19c)	NS	NS	NS	NS	NS	NS	NS	0.0%	NS	NS	NS	NS
GSP-19a (25) (GSP-19ac)	0.0%	0.0%	0.0%	0.0%	0.0%	0.0%	0.0%	0.0%	0.0%	0.0%	NS	NS
GSP-19aa (25) (GSP-19aac)	NS	NS	NS	NS	NS	NS	NS	NS	NS	NS	NS	NS
GSP-19b (25) (GSP-19bc)	NS	NS	NS	NS	NS	NS	NS	NS	NS	NS	NS	NS
GSP-19bb (25) (GSP-19bbc)	NS	NS	NS	NS	NS	NS	NS	0.0%	0.0%	0.0%	0.0%	0.0%
GSP-19bbb (25) (GSP-19bbc)	NS	NS	NS	NS	NS	NS	NS	0.0%	0.0%	0.0%	0.0%	0.0%
GSP-19bbbb (25) (GSP-19bbbb)	NS	NS	NS	NS	NS	NS	NS	NS	NS	NS	NS	NS

Note:
 NS - Not Sampled
Bold values exceed regulatory acceptable levels (25% LEL)
 * - Due to a large berm located offsite behind Well-13, sampling at the GSP-13 (25) location could not be

TABLE 7
MAY 2012 - BAROMETRIC PRESSURE DATA
LEGLER LANDFILL (FACILITY No. 1511A)
JACKSON TOWNSHIP, OCEAN COUNTY, NEW JERSEY

Weather Station Location	State	Date & Time	Time Interval	Temperature	Precipitation	Wind Speed	Wind Direction	Barometric Pressure
Cream Ridge	NJ	5/14/2012 10:00	24 hours prior	65	0	0	S	30.15
Cream Ridge	NJ	5/14/2012 22:00	12 hours prior	65	0	2	SSW	30.10
Cream Ridge	NJ	5/15/2012 0:00	10 hours prior	63	0	1	SSE	30.10
Cream Ridge	NJ	5/15/2012 2:00	8 hours prior	63	0	4	SSE	30.07
Cream Ridge	NJ	5/15/2012 4:00	6 hours prior	63	0	4	SSE	30.03
Cream Ridge	NJ	5/15/2012 6:00	4 hours prior	61	0	4	SSE	30.03
Cream Ridge	NJ	5/15/2012 8:00	2 hours prior	63	0	7	S	30.02
Cream Ridge	NJ	3/28/2012 10:00	During Monitoring	63	0.03	4	SSE	30.02
Cream Ridge	NJ	3/28/2012 11:00	During Monitoring	62	0.28	4	SSE	30.02
Cream Ridge	NJ	3/28/2012 12:00	During Monitoring	64	0.03	3	SE	30
Cream Ridge	NJ	3/28/2012 13:00	During Monitoring	64	0.02	3	SE	29.98
Cream Ridge	NJ	3/28/2012 14:00	During Monitoring	66	0.05	6	S	29.97
Cream Ridge	NJ	3/28/2012 15:00	During Monitoring	68	0	4	SSW	29.94
Cream Ridge	NJ	3/28/2012 16:00	During Monitoring	70	0	7	WSW	29.93

Notes:

Bold Cells indicate the times which FPA conducted the gas monitoring event

FIGURES

Methane Percentages

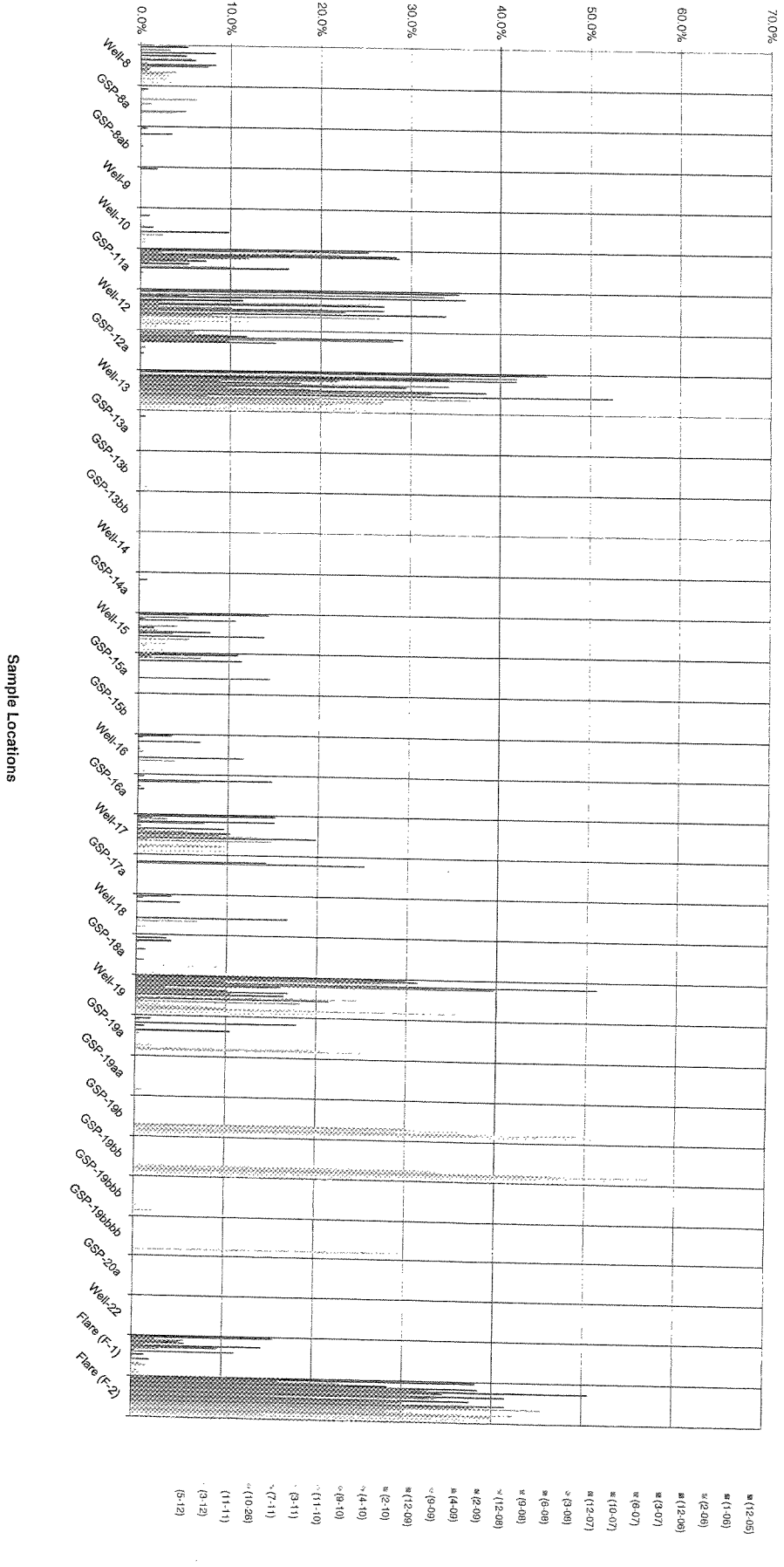


Figure 1
Changes in Onsite Methane Concentrations

Sample Dates

Figure 3
Changes in Offsite Methane Concentrations

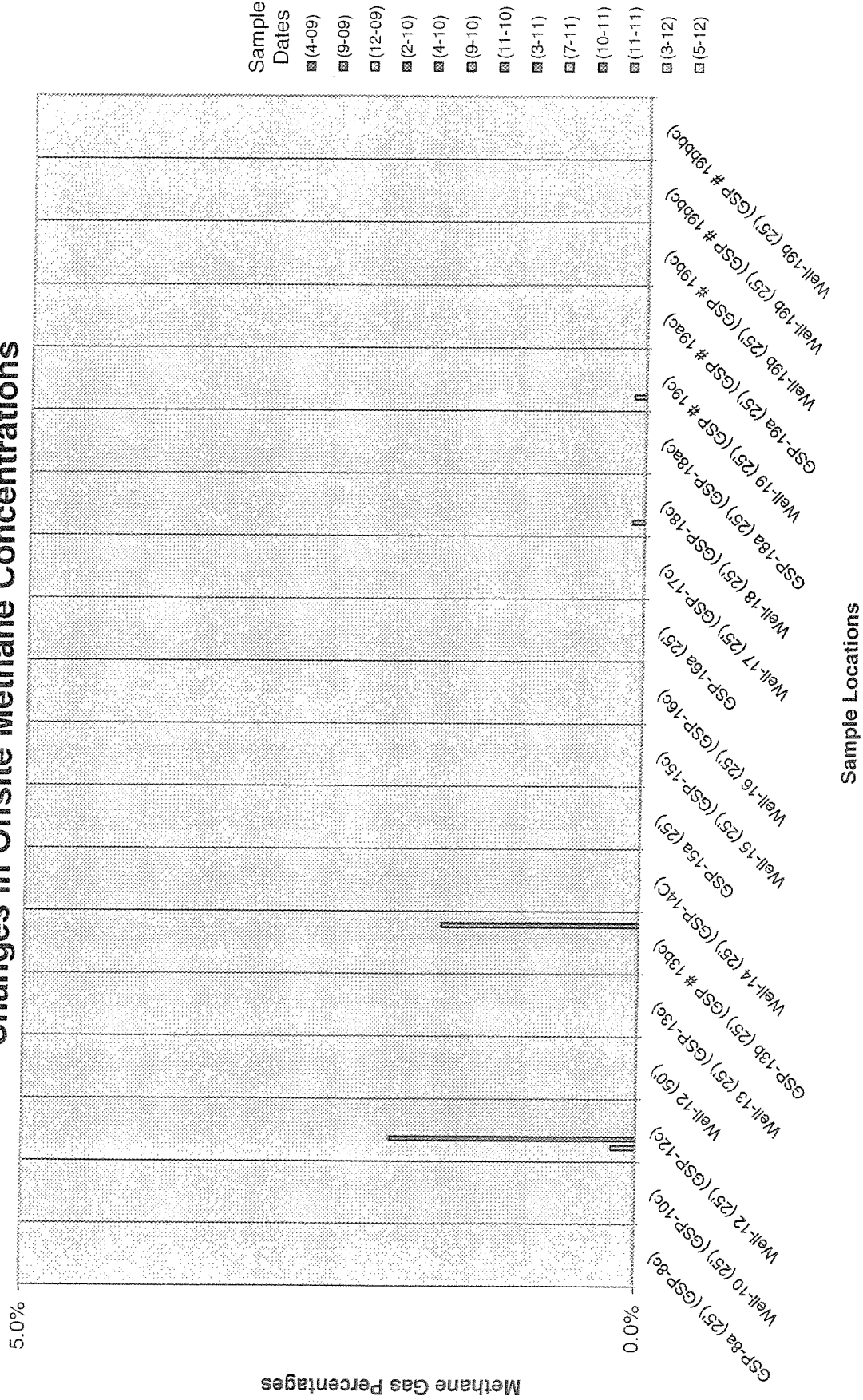


Figure 4
Changes in Offsite Lower Explosive Limits

