



received
4/7/08

March 31, 2008

Mr. Mark Searfoss
Principal Environmental Engineer
Bureau of Landfill and Recycling Management
NJDEP – Division of Solid and Hazardous Waste
401 East State Street, P.O. Box 414
Trenton, NJ 08625-0414

Re: Quarterly Landfill Gas Survey – March 2008
Legler Landfill, Facility No. 1511A
Jackson Township, Ocean County, New Jersey
FPA No. 08E004AGRI

Dear Mr. Searfoss:

INTRODUCTION

This report presents the testing procedures and analytical results of the Quarterly Landfill Gas (LFG) survey conducted March 3, 2008 at Legler Landfill and surrounding properties, Jackson Township, Ocean County, New Jersey. The subject landfill is identified as NJDEP Facility No. 1511A.

BACKGROUND

As part of the Closure and Post Closure Plan Approval, dated February 21, 1996 and Corrective Action Plan dated March 2002, methane gas surveys are to be conducted around the landfill perimeter to monitor potential lateral, offsite gas migration. Since 2000, methane gas concentrations have increased in the western portion and southwestern corner of the landfill. As a result, the New Jersey Department of Environmental Protection (NJDEP) directed Jackson Township to perform quarterly offsite gas surveys to monitor methane gas migration. Offsite sampling points were selected at ten foot intervals starting five feet behind all onsite sampling points where methane concentrations were detected above 0.0%. These samples were collected on the boundary of Block 37, Lot 1 and Block 38, Lot 16.02 and expanded outward from the onsite sampling points.

LANDFILL GAS TESTING PROCEDURES

Gas sampling was performed at 54 gas sampling locations: 23 gas monitoring wells, 29 temporary gas sampling points (GSP), and two flares. The wells were sampled immediately after removing the locked, metal protective cap, by inserting dedicated three foot, 3/16 inch, white polyethylene tubing through a predrilled hole in the plastic well cap. The tubing was attached to the LANDTEC GEM-2000 Gas Extraction Monitor which instantaneously analyzed the LFG. GSP samples were collected utilizing an AMS Soil Sampling Kit. A slam bar and soil gas probe were utilized to penetrate the soil to an approximate depth of two and a half feet (2.5ft). Dedicated 3/16 inch inside diameter, polyethylene tubing was pre-fed through the probe, and the LANDTEC GEM-2000 was again utilized to instantaneously analyze LFG. Onsite wells are located primarily along the property boundary; onsite GSP are located at mid-points between each well from MW-8 to MW-21. Offsite gas sampling was conducted on Block 38, Lot 16.02 and Block 37, Lot 1. Samples were collected in ten foot increments starting five feet behind the nine onsite locations where methane concentrations were detected at levels above 0.0%. Offsite sampling included: one semi-permanent well, constructed with one inch inside diameter PVC and screened from approximately two to three feet below ground surface (bgs), and twelve GSP locations. On February 4, 2008, 4" PVC ball valves equipped with fabricated conversion nipples were installed on the Flares. These valves ensure a sealed connection to the LANDTECH GEM-2000 while sampling. Each gas sample was analyzed for percent methane, percent oxygen, percent carbon dioxide, and lower explosive limit (LEL). Sampling locations are displayed on Drawing No. 1.

GAS TESTING RESULTS

Onsite Gas Testing Results

Methane gas was detected in 13 locations onsite, nine of which were in excess of the 25 percent LEL: well-8, GSP-8 (5'), GSP-8a, well-12, well-13, well-15, well-19, Flare-1 and Flare-2; survey results are presented in Table 1. A comparison of the most recent monitoring results with the historical results indicates an overall decreasing trend of LELs. Changes in onsite methane gas concentrations since September 2006 are presented in Table 2 and graphically on Figure 1. Changes in onsite LEL since September 2006 are presented in Table 3 and graphically on Figure 2.

OFFSITE GAS MONITORING RESULTS

Methane gas was detected at four offsite locations, three of which were in excess of the 25 percent LEL: GSP-12 (5'), GSP-12 (15'), and GSP-13 (5'); survey results of the offsite gas survey are presented in Table 4. Since the supplemental gas survey conducted in December, 2007, decreases in methane gas concentrations were noted at GSP 17 (5') and MW-12 (5'), however two sampling points, MW-13 (5') and MW-12 (25'), reported concentrations of

Methane gas. A comparison of the most recent monitoring results with the historical results indicates an overall decreasing trend of LELs. Changes in offsite methane gas concentrations since September 2006 are presented in Table 5 and graphically on Figure 3. Changes in offsite LEL since September 2006 are presented in Table 6 and graphically on Figure 4.

CONCLUSIONS AND RECOMMENDATIONS

Although there is an increase in the number of onsite sampling points with LELs above the acceptable regulatory percentage, results from the March 2008 LFG survey indicate a decreasing trend of offsite LELs since the December 2007 survey. Jackson Township plans to upgrade the onsite passive LFG collection systems to active LFG collection systems.

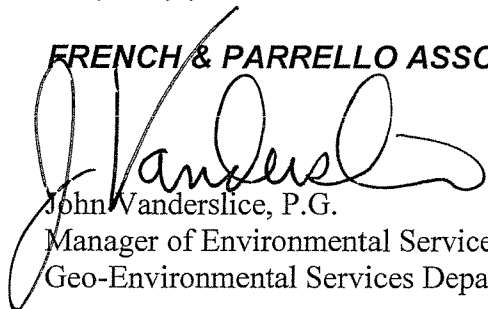
CLOSING AND LIMITATIONS

Services performed by French and Parrello Associates, P.A. during this project have been conducted in a manner consistent with the level of care and skill ordinarily exercised by members of the profession currently practicing in the same locality under similar conditions. No other representation, expressed or implied, and no warranty, guarantee, or fiduciary responsibility is included or intended in the services provided.

Should you have any questions or comments, please do not hesitate to contact us.

Very truly yours,

FRENCH & PARRELLO ASSOCIATES, P.A.



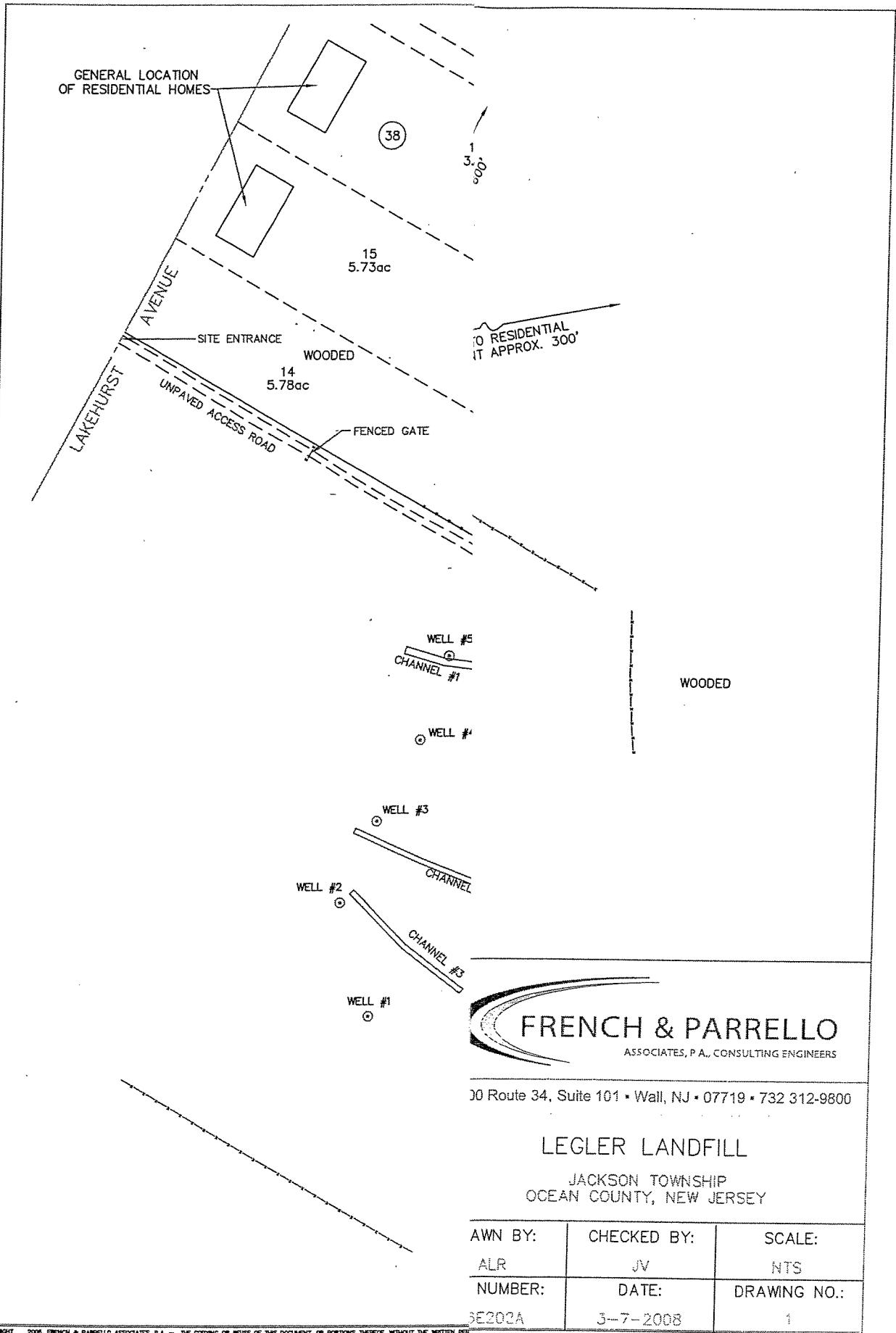
John Wanderslice, P.G.
Manager of Environmental Services
Geo-Environmental Services Department

JV/hp

cc: Dan Burke – Township Engineer

Drawings

L:\EN\2006\06E200A - LEGLER LANDFILL; JACKSON TWP\DWG1 - GAS SURVEY MARCH08.DWG (LAYOUT)



100 Route 34, Suite 101 • Wall, NJ • 07719 • 732 312-9800

LEGLER LANDFILL
JACKSON TOWNSHIP
OCEAN COUNTY, NEW JERSEY

AWN BY: ALR	CHECKED BY: JV	SCALE: NTS
NUMBER: 06E200A	DATE: 3-7-2008	DRAWING NO.: 1

Tables

TABLE 1
MARCH 3, 2008 - ONSITE GAS SURVEY RESULTS
 LEGLER LANDFILL (FACILITY No. 1511A)
 JACKSON TOWNSHIP, OCEAN COUNTY, NEW JERSEY

Well No./ Gas Sampling Point	Percent Methane	Percent Lower Explosive Limit	Percent Carbon Dioxide	Percent Oxygen	Comments
Well # 1	0.0%	0.0%	2.3%	14.8%	
Well # 2	0.0%	0.0%	3.5%	13.2%	
Well # 3	0.0%	0.0%	4.6%	14.0%	
Well # 4	0.0%	0.0%	3.2%	15.6%	
Well # 5	0.0%	0.0%	0.6%	18.2%	
Well # 6	0.0%	0.0%	1.4%	16.8%	
Well # 7	0.0%	0.0%	0.3%	15.0%	
Well # 8	5.7%	114.0%	13.9%	0.4%	
GSP # 8 @ 5'	5.9%	118.0%	12.9%	0.8%	
GSP # 8a	6.3%	126.0%	12.7%	1.1%	
GSP # 8b	0.0%	0.0%	0.9%	19.6%	
Well # 9	0.0%	0.0%	6.7%	8.7%	
GSP # 9a	0.0%	0.0%	0.9%	19.5%	
Well # 10	0.0%	0.0%	9.2%	6.8%	
GSP # 10a	0.0%	0.0%	1.0%	19.6%	
Well # 11	0.0%	0.0%	3.4%	17.2%	
GSP # 11a	1.1%	24.0%	6.7%	11.6%	
Well # 12	25.4%	508.0%	8.1%	0.3%	
GSP # 12a	0.0%	0.0%	90.0%	20.2%	
Well # 13	34.3%	686.0%	19.6%	0.4%	
GSP # 13a	0.0%	0.0%	1.1%	19.6%	
Well # 14	0.0%	0.0%	5.4%	13.3%	
GSP # 14a	0.0%	0.0%	0.3%	20.3%	
Well # 15	4.3%	87.0%	15.1%	2.3%	
GSP # 15a	0.0%	0.0%	0.3%	20.3%	
Well # 16	0.2%	4.0%	11.5%	6.1%	
GSP # 16a	0.0%	0.0%	1.9%	18.5%	
Well # 17	--	--	--	--	well lock was changed, and the key did not work
GSP # 17a	0.0%	1.0%	1.0%	20.1%	
Well # 18	0.1%	2.0%	12.5%	4.5%	
GSP # 18a	0.0%	0.0%	6.2%	11.7%	
Well # 19	9.2%	184.0%	16.4%	1.1%	
GSP # 19a	0.0%	1.0%	6.0%	13.9%	
Well # 20	0.0%	1.0%	5.3%	14.4%	
GSP # 20a	0.0%	0.0%	0.0%	20.8%	
Well # 21	0.0%	1.0%	3.2%	17.3%	
Well # 22	0.1%	2.0%	0.3%	20.5%	
GSP # 22 @ 5'	0.0%	0.0%	0.1%	20.7%	
Well # 23	0.0%	1.0%	4.0%	13.8%	
Flare (F-1)	3.2%	61.0%	1.7%	18.5%	
Flare (F-2)	31.0%	620.0%	21.0%	0.5%	

Notes:

Results in bold exceed the 25% Lower Explosive Limit (LEL)
 Background methane levels approximately 0.2% methane

TABLE 2
ONSITE METHANE GAS CONCENTRATIONS FROM SEPTEMBER 2006 TO March 2008
 LEGLER LANDFILL (FACILITY No. 1511A)
 JACKSON TOWNSHIP, OCEAN COUNTY, NEW JERSEY

Gas Monitoring Well/ Gas Sampling Point	% CH4 (9-06)	% CH4 (12-06)	% CH4 (3-07)	% CH4 (6-07)	% CH4 (10-07)	% CH4 (12-07)	% CH4 (3-08)
Well # 1	0.0%	0.0%	0.0%	0.0%	0.0%	0.0%	0.0%
Well # 2	0.0%	0.0%	0.0%	0.0%	0.0%	0.0%	0.0%
Well # 3	0.0%	0.0%	0.0%	0.0%	0.0%	0.0%	0.0%
Well # 4	0.0%	0.0%	0.0%	0.0%	0.0%	0.0%	0.0%
Well # 5	0.0%	0.0%	0.0%	0.0%	0.20%	0.0%	0.0%
Well # 6	0.0%	0.0%	0.0%	0.0%	0.0%	0.0%	0.0%
Well # 7	0.0%	0.0%	0.0%	0.0%	0.0%	0.0%	0.0%
Well # 8	3.5%	0.0%	8.3%	0.2%	5.1%	0.0%	5.7%
Well # 8 @ 5'	NS	NS	NS	NS	NS	NS	5.9%
GSP # 8a	0.0%	0.0%	0.0%	0.0%	0.0%	0.0%	6.3%
GSP # 8b	0.0%	0.0%	3.5%	0.0%	0.0%	0.0%	0.0%
Well # 9	0.3%	0.0%	0.1%	0.0%	0.0%	0.0%	0.0%
GSP # 9a	0.0%	0.0%	0.0%	0.0%	0.0%	0.0%	0.0%
Well # 10	0.0%	0.0%	1.0%	0.0%	0.0%	0.0%	0.0%
GSP # 10a	0.0%	0.0%	0.4%	0.0%	0.0%	0.0%	0.0%
Well # 11	0.0%	0.0%	0.0%	0.0%	0.0%	0.0%	0.0%
GSP # 11a	16.8%	28.4%	28.7%	12.0%	5.3%	7.3%	1.1%
Well # 12	25.7%	5.3%	36.1%	0.0%	11.4%	2.4%	25.4%
GSP # 12a	0.0%	11.8%	29.1%	28.0%	9.8%	15.0%	0.0%
Well # 13	40.0%	34.4%	41.8%	22.1%	9.0%	17.8%	34.3%
GSP # 13a	0.3%	0.6%	0.0%	0.0%	0.0%	0.0%	0.0%
Well # 14	0.0%	0.0%	0.0%	0.0%	0.0%	0.0%	0.0%
GSP # 14a	0.0%	0.0%	0.9%	0.0%	0.0%	0.0%	0.0%
Well # 15	8.3%	0.7%	10.7%	0.0%	0.0%	0.0%	0.0%
GSP # 15a	0.3%	0.1%	11.4%	0.0%	0.0%	0.0%	4.3%
Well # 16	0.3%	0.0%	6.9%	0.2%	0.0%	0.0%	0.2%
GSP # 16a	0.0%	14.9%	6.9%	0.0%	0.0%	0.3%	0.0%
Well # 17	10.7%	0.3%	15.2%	7.5%	0.0%	0.4%	0.0%
GSP # 17a	0.0%	0.0%	14.4%	25.2%	0.0%	0.0%	NS
Well # 18	0.0%	0.1%	4.8%	0.0%	0.0%	0.0%	0.0%
GSP # 18a	0.0%	3.9%	0.3%	0.0%	0.0%	0.0%	0.1%
Well # 19	24.2%	10.0%	51.2%	39.7%	15.9%	3.3%	9.2%
GSP # 19a	0.0%	0.0%	17.8%	0.0%	1.0%	0.0%	0.0%
Well # 20	0.0%	0.0%	0.0%	0.0%	0.0%	0.0%	0.0%
GSP # 20a	0.3%	0.0%	0.0%	0.0%	0.0%	0.0%	0.0%
Well # 21	0.0%	0.0%	0.0%	0.0%	0.0%	0.0%	0.0%
Well # 22	0.0%	0.0%	0.0%	0.0%	0.0%	0.0%	0.0%
GSP # 22 @ 5'	0.0%	0.0%	0.0%	0.0%	0.0%	0.0%	0.1%
Well # 23	0.0%	0.0%	0.0%	0.0%	0.0%	0.0%	0.0%
Flare (F-1)	34.2%	5.3%	5.9%	1.6%	14.4%	9.6%	0.0%
Flare (F-2)	43.2%	28.5%	38.5%	33.0%	50.7%	34.6%	3.2%
							31.0%

Note:
 Data from 6-06 to 9-06 from the Quarterly Landfill Gas Survey Results, T&M Associates, October 2006

TABLE 3
 ONSITE LOWER EXPLOSIVE LIMITS FROM SEPTEMBER 2006 TO MARCH 2008
 LEGLER LANDFILL (FACILITY No. 1511A)
 JACKSON TOWNSHIP, OCEAN COUNTY, NEW JERSEY

Gas Monitoring Well/ Gas Sampling Point	LEL (9-06)	LEL (12-06)	LEL (3-07)	LEL (6-07)	LEL (10-07)	LEL (12-07)	LEL (3-08)
Well # 1	0.0%	0.0%	0.0%	0.0%	0.0%	0.0%	0.0%
Well # 2	0.0%	0.0%	0.0%	0.0%	0.0%	0.0%	0.0%
Well # 3	0.0%	0.0%	0.0%	0.0%	0.0%	0.0%	0.0%
Well # 4	0.0%	0.0%	0.0%	0.0%	0.0%	0.0%	0.0%
Well # 5	0.0%	0.0%	0.0%	0.0%	0.20%	0.0%	0.0%
Well # 6	0.0%	0.0%	0.0%	0.0%	0.0%	0.0%	0.0%
Well # 7	0.0%	0.0%	0.0%	0.0%	0.0%	0.0%	0.0%
Well # 8	70.0%	166.0%	166.0%	4.0%	102.0%	0.0%	114.0%
Well # 8 @ 5'	NS	NS	NS	NS	NS	NS	118.0%
GSP # 8a	0.0%	0.0%	0.0%	0.0%	0.0%	0.0%	126.0%
GSP # 8b	0.0%	0.0%	70.0%	0.0%	0.0%	0.0%	0.0%
Well # 9	6.0%	200.0%	200.0%	0.0%	0.0%	0.0%	0.0%
GSP # 9a	0.0%	0.0%	0.0%	0.0%	0.0%	0.0%	0.0%
Well # 10	0.0%	0.0%	20.0%	0.0%	0.0%	0.0%	0.0%
GSP # 10a	0.0%	0.0%	8.0%	0.0%	0.0%	0.0%	0.0%
Well # 11	0.0%	0.0%	0.0%	0.0%	0.0%	0.0%	0.0%
GSP # 11a	336.0%	568.0%	574.0%	240.0%	106.0%	146.0%	22.0%
Well # 12	514.0%	106.0%	722.0%	0.0%	228.0%	48.0%	508.0%
GSP # 12a	0.0%	236.0%	562.0%	560.0%	196.0%	300.0%	0.0%
Well # 13	800.0%	688.0%	836.0%	442.0%	180.0%	356.0%	686.0%
GSP # 13a	6.0%	12.0%	0.0%	0.0%	0.0%	0.0%	0.0%
Well # 14	0.0%	0.0%	0.0%	0.0%	0.0%	0.0%	0.0%
GSP # 14a	0.0%	0.0%	18.0%	0.0%	0.0%	0.0%	0.0%
Well # 15	166.0%	14.0%	214.0%	0.0%	0.0%	0.0%	86.0%
GSP # 15a	6.0%	2.0%	228.0%	0.0%	0.0%	0.0%	0.0%
Well # 16	6.0%	0.0%	138.0%	0.0%	0.0%	0.0%	4.0%
GSP # 16a	0.0%	298.0%	138.0%	0.2%	0.0%	6.0%	0.0%
Well # 17	214.0%	6.0%	304.0%	150.0%	0.0%	8.0%	NS
GSP # 17a	0.0%	0.0%	288.0%	504.0%	0.0%	0.0%	0.0%
Well # 18	0.0%	2.0%	96.0%	0.0%	0.0%	0.0%	2.0%
GSP # 18a	0.0%	78.0%	6.0%	0.0%	0.0%	0.0%	0.0%
Well # 19	484.0%	200.0%	1024.0%	794.0%	318.0%	66.0%	184.0%
GSP # 19a	0.0%	0.0%	356.0%	0.0%	20.0%	0.0%	0.0%
Well # 20	0.0%	0.0%	0.0%	0.0%	0.0%	0.0%	0.0%
GSP # 20a	6.0%	0.0%	0.0%	0.0%	0.0%	0.0%	0.0%
Well # 21	0.0%	0.0%	0.0%	0.0%	0.0%	0.0%	0.0%
Well # 22	0.0%	0.0%	0.0%	0.0%	0.0%	0.0%	2.0%
GSP # 22 @ 5'	0.0%	0.0%	0.0%	0.0%	0.0%	0.0%	0.0%
Well # 23	0.0%	0.0%	0.0%	0.0%	0.0%	0.0%	0.0%
Flare (F-1)	684.0%	106.0%	118.0%	32.0%	288.0%	192.0%	64.0%
Flare (F-2)	864.0%	570.0%	770.0%	660.0%	1014.0%	692.0%	620.0%

Note:
 Data from 6-06 to 9-06 from the Quarterly Landfill Gas Survey Results, T&M Associates, October 2006
 Highlighted and Bold values exceed regulatory acceptable levels (25% LEL)

TABLE 4
MARCH 3, 2008 - OFFSITE GAS SURVEY RESULTS
 LEGLER LANDFILL (FACILITY No. 1511A)
 JACKSON TOWNSHIP, OCEAN COUNTY, NEW JERSEY

Well No./ Gas Sampling Point	Percent Methane	Percent Lower Explosive Limit	Percent Carbon Dioxide	Percent Oxygen	Comments
GSP # 8a @ 5'	0.0%	0.0%	1.9%	18.1%	
GSP # 11a @ 5'	0.0%	0.0%	3.3%	15.8%	
GSP # 12 @ 5'	4.8%	98.0%	6.7%	12.6%	
GSP # 12 @ 15'	2.4%	48.0%	6.9%	12.4%	
GSP # 12 @ 25'	0.7%	14.0%	13.8%	0.4%	
GSP # 12 @ 35'	0.0%	0.0%	1.9%	18.5%	
GSP # 13 @ 5'	23.7%	474.0%	12.6%	6.9%	
GSP # 13 @ 25'	0.0%	0.0%	4.3%	16.4%	**
GSP # 15 @ 5'	0.0%	0.0%	1.1%	19.6%	
GSP # 16 @ 5'	0.0%	0.0%	2.5%	17.8%	
GSP # 17 @ 5'	0.0%	0.0%	5.2%	13.3%	
GSP # 18 @ 5'	0.0%	0.0%	0.7%	19.8%	
GSP # 19 @ 5'	0.0%	0.0%	1.7%	18.7%	

Notes:

Results in bold exceed the 25% Lower Explosive Limit (LEL)

Background methane levels approximately 0.2% methane

NS - Not Sampled

Highlighted and Bold values exceed regulatory acceptable levels (25% LEL)

** - A large berm was directly behind sample point till approximately 25' which had an elevation of approximately 7' above the well point.

TABLE 5
OFFSITE METHANE GAS CONCENTRATIONS FROM SEPTEMBER 2006 TO MARCH 2008
 LEGLER LANDFILL (FACILITY No. 1511A)
 JACKSON TOWNSHIP, OCEAN COUNTY, NEW JERSEY

Gas Monitoring Well/ Gas Sampling Point	% CH4 (9-06)	% CH4 (12-06)	% CH4 (3-07)	% CH4 (6-07)	% CH4 (11-07)	% CH4 (12-07)	% CH4 (3-08)
GSP-8(5)	NS	NS	NS	NS	0.0%	0.0%	NS
GSP-8b(5)	NS	NS	NS	NS	0.1%	0.0%	NS
GSP-11a(5)	0.0%	0.1%	0.5%	0.0%	0.1%	0.0%	NS
GSP-11a(45)	0.0%	0.0%	0.3%	0.0%	NS	NS	NS
GSP-11a(55)	0.0%	0.0%	0.0%	NS	NS	NS	NS
GSP-11a(65)	0.0%	0.0%	0.0%	NS	NS	NS	NS
GSP-11a(85)	0.0%	0.0%	0.1%	NS	NS	NS	NS
GSP-11a(100)	0.0%	0.0%	0.0%	NS	NS	NS	NS
GSP-12(5)	0.0%	0.0%	37.6%	18.2%	38%	19.4%	4.8%
GSP-12(15)	0.0%	0.0%	17.1%	0.0%	NS	0.0%	2.4%
GSP-12(25)	NS	NS	NS	NS	NS	NS	0.7%
GSP-12(35)	0.0%	0.0%	0.0%	0.0%	NS	NS	0.0%
GSP-12(55)	2.2%	0.0%	0.0%	NS	NS	NS	NS
GSP-12(65)	0.4%	0.0%	0.0%	NS	NS	NS	NS
GSP-12(85)	0.0%	0.0%	0.0%	NS	NS	NS	NS
GSP-12a(5)	0.0%	4.6%	6.3%	2.4%	6.7%	1.6%	NS
GSP-12a(20)	1.3%	0.4%	22.2%	0.0%	NS	15.8%	NS
GSP-12a(40)	0.3%	0.0%	0.0%	6.6%	NS	0.0%	NS
GSP-12a(60)	2.6%	0.0%	NS	0.0%	NS	NS	NS
GSP-12a(80)	3.4%	NS	NS	NS	NS	NS	NS
GSP-12a(120)	0.0%	NS	NS	NS	NS	NS	NS
GSP-13(5)	NS	NS	NS	NS	NS	NS	NS
GSP-13(25)	NS	NS	NS	NS	NS	NS	23.7%
GSP-15(5)	NS	NS	NS	NS	NS	NS	0.0%
GSP-15a(5)	NS	NS	NS	NS	0.0%	NS	0.0%
GSP-16(5)	NS	NS	NS	NS	0.0%	NS	NS
GSP-16a(5)	NS	NS	NS	NS	0.0%	0.0%	0.0%
GSP-17(5)	NS	NS	NS	NS	32.7%	NS	NS
GSP-17(15)	NS	NS	NS	NS	NS	9.1%	0.0%
GSP-17a(5)	NS	NS	NS	NS	NS	NS	NS
GSP-18(5)	NS	NS	NS	NS	8.8%	NS	NS
GSP-18a(5)	NS	NS	NS	NS	0.0%	0.0%	0.0%
GSP-19(5)	NS	NS	NS	NS	0.0%	NS	NS
GSP-19(15)	NS	NS	NS	NS	1.4%	0.0%	0.0%
GSP-19a(5)	NS	NS	NS	NS	0.0%	NS	NS
GSP-22(5)	NS	NS	NS	NS	0.0%	NS	0.0%

Note:
 Data from 6-06 to 9-06 from the Quarterly Landfill Gas Survey Results, T&M Associates, October 2006
 NS - Not Sampled

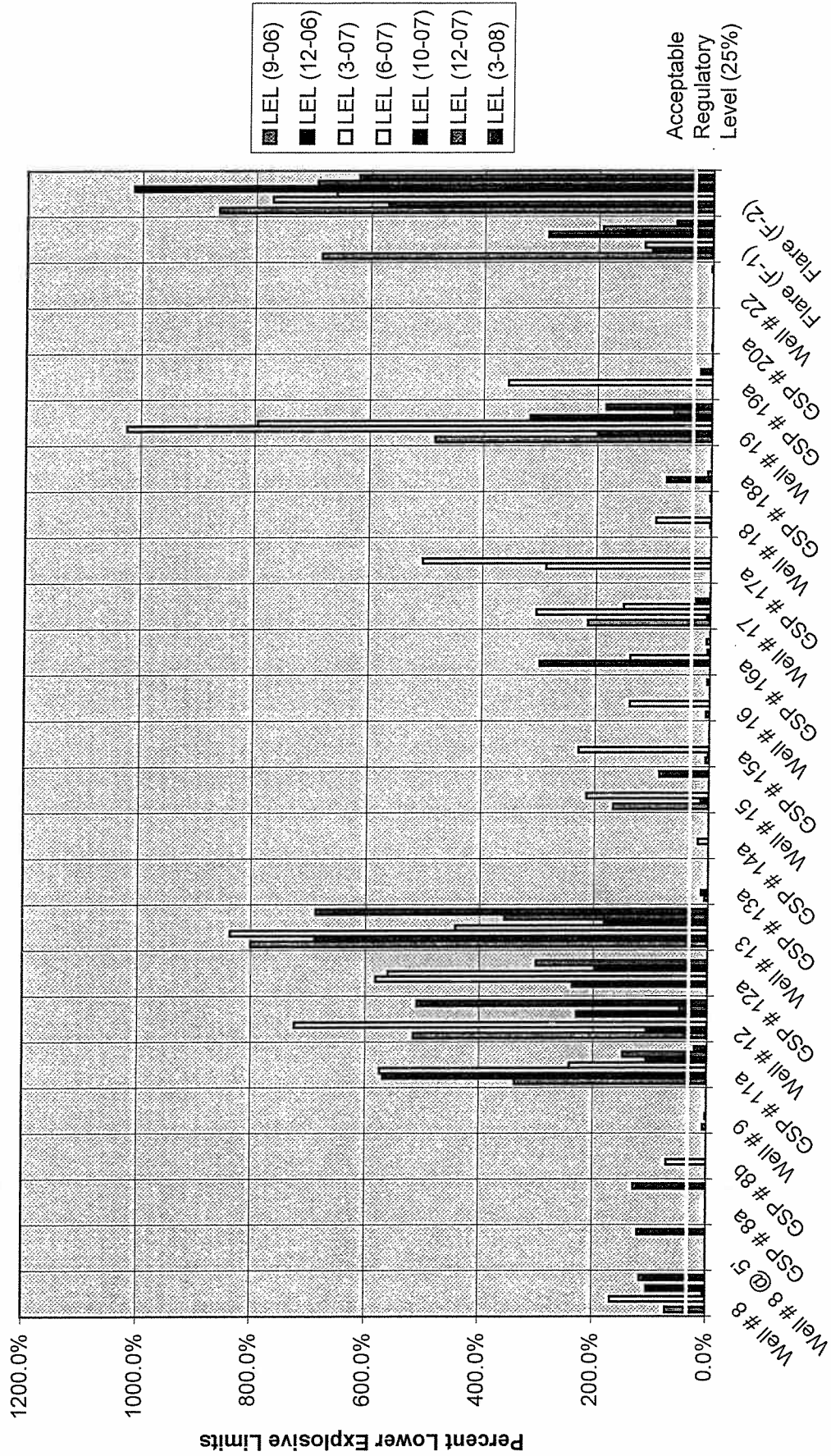
TABLE 6
OFFSITE LOWER EXPLOSIVE LIMITS FROM SEPTEMBER 2006 TO MARCH 2008
 LEGLER LANDFILL (FACILITY No. 1511A)
 JACKSON TOWNSHIP, OCEAN COUNTY, NEW JERSEY

Gas Monitoring Well/ Gas Sampling Point	LEL (9-06)	LEL (12-06)	LEL (3-07)	LEL (6-07)	LEL (11-07)	LEL (12-07)	LEL (3-08)
GSP-8(5')	NS	NS	NS	NS	0.0%	0.0%	NS
GSP-8bt(5')	NS	NS	NS	NS	2.0%	0.0%	NS
GSP-11a(5')	0.0%	2.0%	10.0%	0.0%	2.0%	0.0%	NS
GSP-11a(45')	0.0%	0.0%	6.0%	0.0%	NS	NS	NS
GSP-11a(55')	0.0%	0.0%	0.0%	NS	NS	NS	NS
GSP-11a(65')	0.0%	0.0%	0.0%	NS	NS	NS	NS
GSP-11a(85')	0.0%	0.0%	2.0%	NS	NS	NS	NS
GSP-11a(100')	0.0%	0.0%	0.0%	NS	NS	NS	NS
GSP-12(5')	0.0%	0.0%	752.0%	364.0%	760%	388.0%	96.0%
GSP-12(15')	0.0%	0.0%	342.0%	0.0%	NS	0.0%	48.0%
GSP-12(25')	NS	NS	NS	NS	NS	NS	14.0%
GSP-12(35')	0.0%	0.0%	0.0%	0.0%	NS	NS	0.0%
GSP-12(55')	44.0%	0.0%	0.0%	NS	NS	NS	NS
GSP-12(65')	0.4%	0.0%	0.0%	NS	NS	NS	NS
GSP-12(85')	0.0%	0.0%	0.0%	NS	NS	NS	NS
GSP-12a(5')	0.0%	92.0%	126.0%	48.0%	134.0%	32.0%	NS
GSP-12a(20')	26.0%	8.0%	444.0%	0.0%	NS	316.0%	NS
GSP-12a(40')	6.0%	0.0%	0.0%	132.0%	NS	0.0%	NS
GSP-12a(60')	52.0%	0.0%	NS	0.0%	NS	NS	NS
GSP-12a(80')	68.0%	NS	NS	NS	NS	NS	NS
GSP-12a(120')	0.0%	NS	NS	NS	NS	NS	NS
GSP-13(5')	NS	NS	NS	NS	NS	NS	NS
GSP-13(25')	NS	NS	NS	NS	NS	NS	474.0%
GSP-15(5')	NS	NS	NS	NS	NS	NS	0.0%
GSP-15a(5')	NS	NS	NS	NS	0.0%	NS	0.0%
GSP-16(5')	NS	NS	NS	NS	0.0%	NS	NS
GSP-16a(5')	NS	NS	NS	NS	0.0%	0.0%	0.0%
GSP-17(5')	NS	NS	NS	NS	0.0%	NS	NS
GSP-17(15')	NS	NS	NS	NS	654.0%	182.0%	0.0%
GSP17a(5')	NS	NS	NS	NS	NS	NS	NS
GSP18(5')	NS	NS	NS	NS	176.0%	NS	NS
GSP18a(5')	NS	NS	NS	NS	0.0%	0.0%	0.0%
GSP19(5')	NS	NS	NS	NS	0.0%	NS	NS
GSP19(15')	NS	NS	NS	NS	28.0%	0.0%	0.0%
GSP19a(5')	NS	NS	NS	NS	0.0%	NS	NS
GSP-22(5')	NS	NS	NS	NS	NS	NS	0.0%

Note:
 Data from 6-06 to 9-06 from the Quarterly Landfill Gas Survey Results, T&M Associates, October 2006
 NS - Not Sampled
 Highlighted and Bold values exceed regulatory acceptable levels (25% LEL)

Figures

Figure 2
Changes in Onsite Lower Explosive Limits



Acceptable
 Regulatory
 Level (25%)

Figure 4
Changes in Offsite Lower Explosive Limits

