



March 10, 2009

Mr. Mark Searfoss  
Principal Environmental Engineer  
Bureau of Landfill and Recycling Management  
**NJDEP – DIVISION OF SOLID AND HAZARDOUS WASTE**  
401 East State Street, P.O. Box 414  
Trenton, New Jersey 08625-0414

Re: Quarterly Landfill Gas Survey – 1<sup>st</sup> Quarter 2009  
**Legler Landfill, Facility No. 1511A**  
Jackson Township, Ocean County, New Jersey  
*FPA No. 08E004AGR4*

Dear Mr. Searfoss:

## INTRODUCTION

This report presents the testing procedures and analytical results of the Quarterly Landfill Gas (LFG) survey conducted by French & Parrello Associates, P.A. (FPA) on February 11, 2009, at Legler Landfill and surrounding properties, Jackson Township, Ocean County, New Jersey. The subject landfill is identified as New Jersey Department of Environmental Protection (NJDEP) Facility No. 1511A.

## BACKGROUND

As part of the Closure and Post-Closure Plan Approval dated February 21, 1996, and Corrective Action Plan dated March 2002, methane gas surveys are to be conducted around the landfill perimeter to monitor potential lateral, offsite gas migration. Since 2000, methane gas concentrations have increased in the western portion and southwestern corner of the landfill. As a result, the NJDEP directed Jackson Township to perform quarterly offsite gas surveys to monitor methane gas migration. As a result, FPA selected offsite sampling points at 10-foot intervals starting five feet behind all onsite sampling points where methane concentrations were detected above 0.1%. These samples were collected on the boundary of Block 37, Lot 1, and Block 38, Lot 16.02, and expanded outward from the onsite sampling points.

received  
3/12/09

1800 Route 34, Suite 101 • Wall, NJ • 07719 • T 732.312.9800 • F 732.312.9801 • www.fpaengineers.com

Laurence E. French, P.E. • Argo T. Parrello, P.E. • James B. Heller, P.E. • Joseph M. Edwards, P.E. • Scott D. Watkins, P.E.  
David I. Calnan, P.E. • William F. Nero, P.E., P.P., C.M.E. • Keith B. Smith, P.E., P.P., C.M.E. • Steven A. Tardy, P.E.

Offices: Wall Township, NJ • Hackettstown, NJ • Bethlehem, PA

00 11



## **LANDFILL GAS TESTING PROCEDURES**

Gas sampling was performed at 46 gas sampling locations: 23 gas monitoring wells, one gas monitoring temporary well point (TWP), 20 temporary gas sampling points (GSP) and two flares. The wells were sampled immediately after removing the locked, metal protective cap by inserting dedicated three-foot, 3/16-inch, white polyethylene tubing through a pre-drilled hole in the plastic well cap. The tubing was attached to the LANDTEC GEM-2000 Gas Extraction Monitor (GEM-2000) which instantaneously analyzed the LFG. GSP samples were collected utilizing an AMS Soil Sampling Kit. A slam bar and soil gas probe were utilized to penetrate the soil to an approximate depth of two and one-half feet. Dedicated 3/16-inch inside diameter, polyethylene tubing was pre-fed through the probe, and the GEM-2000 was utilized to instantaneously analyze LFG. The TWP was sampled by removing the plastic lid and feeding dedicated 3/16-inch, polyethylene tubing down the casing, then utilizing the LANDTEC GEM-2000 to instantaneously analyze the LFG. Onsite wells are located primarily along the property boundary; onsite GSP are located at mid-points between each well from well #8 to well #21. On February 4, 2008, four-inch PVC ball valves equipped with fabricated conversion nipples were installed on the Flares. These valves ensure a sealed connection to the LANDTECH GEM-2000 while sampling.

Offsite gas sampling was conducted on Block 38, Lots 15 and 16.02, as well as Block 37, Lot 1. Samples were collected in 10-foot increments starting five feet behind the onsite locations where methane concentrations were detected at levels above 0.2% and at the one offsite TWP. Offsite sampling included: one temporary well, constructed with one-inch inside diameter PVC and screened from approximately two-to-three feet below ground surface (bgs), and six GSP locations. Each gas sample was analyzed for percent methane, percent oxygen, percent carbon dioxide and lower explosive limit (LEL). Sampling locations are displayed on Drawing No. 1.

## **GAS TESTING RESULTS**

### **Onsite Gas Testing Results**

Methane gas was detected in 10 locations onsite, all of which were in excess of the 25 percent LEL: Well #8, Well #10, GSP #11a, Well #12, Well #13, Well #15, Well #17, Well #19, and Flare one (F-1), and Flare two (F-2); survey results are presented in Table No. 1. A comparison of the most recent monitoring results with the historical results shows no indication of additional methane migration. Changes in onsite methane gas concentrations, since September 2006, are presented in Table No. 2 and graphically on Figure No. 1. Changes in onsite LEL, since September 2006, are presented in Table No. 3, and graphically on Figure No. 2.

## OFFSITE GAS MONITORING RESULTS

During the February 2009 landfill gas monitoring event, methane gas was detected at one offsite location: GSP-12 (5'); field analysis results of the offsite gas survey are presented in Table No. 4. Since the supplemental gas survey conducted in December 2008, an increase in methane gas concentration was noted at GSP-12 (5'), and a decrease of methane gas concentration was noted at TWP-12a (5'). A comparison of the most recent monitoring results with the historical results indicates an overall decreasing trend of LELs. Changes in offsite methane gas concentrations, since September 2006, are presented in Table No. 5, and graphically on Figure No. 3. Changes in offsite LEL, since September 2006, are presented in Table No. 6 and graphically on Figure No. 4.

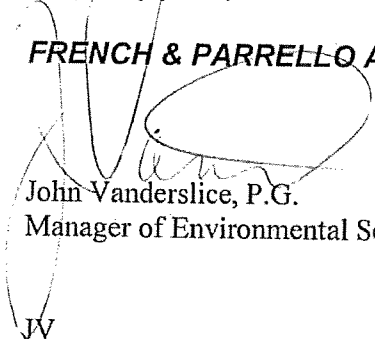
## CONCLUSIONS AND RECOMMENDATIONS

The most current quarterly gas survey indicates a decreasing trend in both onsite and offsite LELs when compared to historic surveys. An LEL was detected above the acceptable regulatory percentage in one offsite sampling point (GSP-12 [5']) in February 2009. Jackson Township has completed the modification construction of the onsite active LFG collection systems on September 30, 2008, and prior to the completion of the first quarterly gas survey for 2009, the Jackson Township Department of Public Works confirmed the modified active LFG collection system was fully operational.

Should you have any questions or comments, please do not hesitate to contact us.

Very truly yours,

**FRENCH & PARRELLO ASSOCIATES, P.A.**



John Vanderslice, P.G.  
Manager of Environmental Services

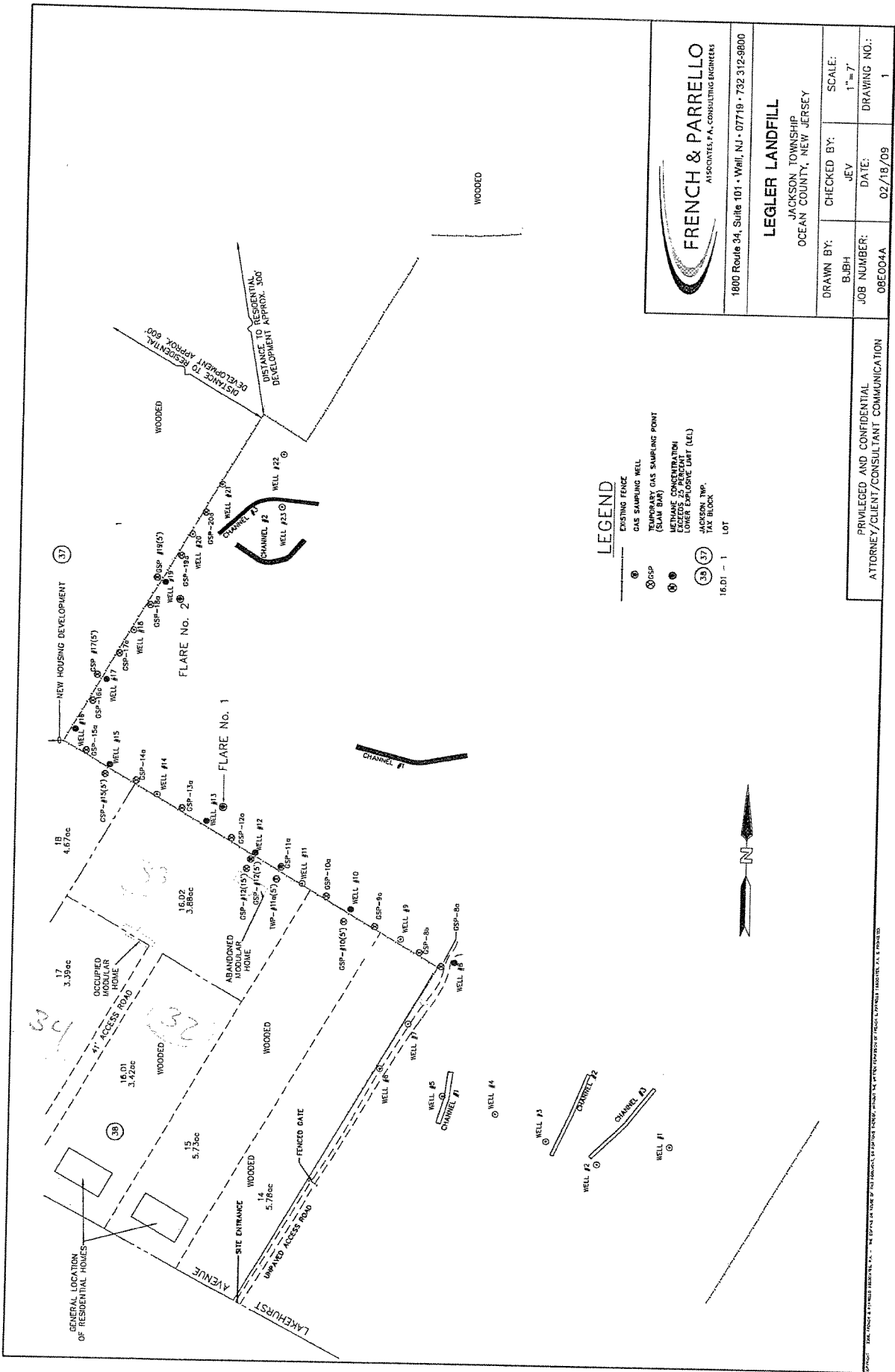
JV

cc: Dan Burke – *Jackson Township Engineer*

**DRAWINGS**

---

B1  
1/2002



**FRENCH & PARRELLO**  
 ASSOCIATES, P.A., CONSULTING ENGINEERS  
 1800 Route 34, Suite 101 • Wall, NJ • 07719 • 732.312.9800

**LEGLER LANDFILL**  
 JACKSON TOWNSHIP  
 OCEAN COUNTY, NEW JERSEY

|                        |                    |                   |
|------------------------|--------------------|-------------------|
| DRAWN BY:<br>BJBH      | CHECKED BY:<br>JEV | SCALE:<br>1"=7'   |
| JOB NUMBER:<br>08E004A | DATE:<br>02/18/09  | DRAWING NO.:<br>1 |

**LEGEND**

- ⊙ EXISTING FENCE
  - ⊙ GAS SAMPLING WELL
  - ⊙ TEMPORARY GAS SAMPLING POINT (SLAM BAR)
  - ⊙ METHANE CONCENTRATION WELL
  - ⊙ JACKSON TWP. TAX BLOCK WELL
- 16.01 - 1 LOT

PRIVILEGED AND CONFIDENTIAL  
 ATTORNEY/CLIENT/CONSULTANT COMMUNICATION

DATE PLOTTED: 02/18/09 10:00 AM. THE INFORMATION ON THIS DRAWING IS THE PROPERTY OF FRENCH & PARRELLO ASSOCIATES, P.A. © 2009.

## ***TABLES***

---

**TABLE 1**  
**February 11, 2009 - ONSITE GAS SURVEY RESULTS**  
**LEGLER LANDFILL (FACILITY No. 1511A)**  
**JACKSON TOWNSHIP, OCEAN COUNTY, NEW JERSEY**

| Well No./ Gas Sampling Point | Percent Methane | Percent Lower Explosive Limit | Percent Carbon Dioxide | Percent Oxygen | Comments |
|------------------------------|-----------------|-------------------------------|------------------------|----------------|----------|
| Well # 1                     | 0.1%            | 2.0%                          | 0.6%                   | 17.7%          |          |
| Well # 2                     | 0.1%            | 2.0%                          | 4.4%                   | 14.8%          |          |
| Well # 3                     | 0.1%            | 2.0%                          | 6.2%                   | 13.5%          |          |
| Well # 4                     | 0.1%            | 2.0%                          | 5.1%                   | 11.8%          |          |
| Well # 5                     | 0.1%            | 2.0%                          | 4.3%                   | 12.4%          |          |
| Well # 6                     | 0.1%            | 2.0%                          | 3.0%                   | 14.3%          |          |
| Well # 7                     | 0.1%            | 2.0%                          | 5.7%                   | 11.6%          |          |
| Well # 8                     | 8.3%            | <b>166.0%</b>                 | 33.4%                  | 0.1%           |          |
| GSP # 8a                     | 0.1%            | 2.0%                          | 0.0%                   | 2.5%           |          |
| GSP # 8b                     | 0.2%            | 4.0%                          | 1.1%                   | 18.8%          |          |
| Well # 9                     | 0.1%            | 2.0%                          | 19.4%                  | 3.3%           |          |
| GSP # 9a                     | 0.1%            | 2.0%                          | 0.0%                   | 2.7%           |          |
| Well # 10                    | 1.4%            | <b>28.0%</b>                  | 24.5%                  | 1.0%           |          |
| GSP # 10a                    | 0.1%            | 2.0%                          | 0.0%                   | 20.7%          |          |
| Well # 11                    | 0.1%            | 2.0%                          | 4.0%                   | 16.5%          |          |
| GSP # 11a                    | 16.4%           | <b>328.0%</b>                 | 34.4%                  | 1.4%           |          |
| Well # 12                    | 27.0%           | <b>540.0%</b>                 | 42.4%                  | 0.4%           |          |
| GSP # 12a                    | 0.1%            | 2.0%                          | 0.0%                   | 20.3%          |          |
| Well # 13                    | 38.4%           | <b>768.0%</b>                 | 48.2%                  | 0.7%           |          |
| GSP # 13a                    | 0.1%            | 2.0%                          | 2.5%                   | 16.7%          |          |
| Well # 14                    | 0.1%            | 2.0%                          | 7.3%                   | 13.4%          |          |
| GSP # 14a                    | 0.1%            | 2.0%                          | 1.0%                   | 18.2%          |          |
| Well # 15                    | 7.9%            | <b>158.0%</b>                 | 38.1%                  | 1.5%           |          |
| GSP # 15a                    | 0.1%            | 2.0%                          | 0.2%                   | 19.4%          |          |
| Well # 16                    | 0.1%            | 2.0%                          | 26.2%                  | 3.7%           |          |
| GSP # 16a                    | 0.1%            | 2.0%                          | 0.4%                   | 18.0%          |          |
| Well # 17                    | 10.3%           | <b>206.0%</b>                 | 38.1%                  | 0.3%           |          |
| GSP # 17a                    | 0.1%            | 2.0%                          | 1.0%                   | 18.7%          |          |
| Well # 18                    | 0.1%            | 2.0%                          | 26.0%                  | 3.4%           |          |
| GSP # 18a                    | 0.1%            | 2.0%                          | 1.2%                   | 17.9%          |          |
| Well # 19                    | 16.4%           | <b>328.0%</b>                 | 41.0%                  | 1.4%           |          |
| GSP # 19a                    | 0.1%            | 2.0%                          | 7.3%                   | 15.0%          |          |
| Well # 20                    | 0.1%            | 2.0%                          | 6.0%                   | 14.2%          |          |
| GSP # 20a                    | 0.1%            | 2.0%                          | 2.2%                   | 19.1%          |          |
| Well # 21                    | 0.1%            | 2.0%                          | 4.2%                   | 17.1%          |          |
| Well # 22                    | 0.1%            | 2.0%                          | 40.8%                  | 22.4%          |          |
| Well # 23                    | 0.1%            | 2.0%                          | 0.0%                   | 21.7%          |          |
| Flare (F-1)                  | 1.4%            | <b>28.0%</b>                  | 3.2%                   | 16.7%          |          |
| Flare (F-2)                  | 37.5%           | <b>750.0%</b>                 | 60.2%                  | 0.5%           |          |

**Notes:**

Background methane levels approximately 0.1% methane

TABLE 2  
 ONSITE METHANE GAS CONCENTRATIONS FROM SEPTEMBER 2006 TO FEBRUARY 2009  
 LEGLER LANDFILL (FACILITY No. 1511A)  
 JACKSON TOWNSHIP, OCEAN COUNTY, NEW JERSEY

| Gas Monitoring Well/<br>Gas Sampling Point | % CH4<br>(12-06) | % CH4<br>(3-07) | % CH4<br>(6-07) | % CH4<br>(10-07) | % CH4<br>(12-07) | % CH4<br>(3-08) | % CH4<br>(6-08) | % CH4<br>(9-08) | % CH4<br>(12-08) | % CH4<br>(2-09) |
|--|------------------|-----------------|-----------------|------------------|------------------|-----------------|-----------------|-----------------|------------------|-----------------|
| Well # 1                                   | 0.0%             | 0.0%            | 0.0%            | 0.0%             | 0.0%             | 0.0%            | 0.0%            | 0.0%            | 0.0%             | 0.1%            |
| Well # 2                                   | 0.0%             | 0.0%            | 0.0%            | 0.0%             | 0.0%             | 0.0%            | 0.0%            | 0.0%            | 0.0%             | 0.1%            |
| Well # 3                                   | 0.0%             | 0.0%            | 0.0%            | 0.0%             | 0.0%             | 0.0%            | 0.0%            | 0.0%            | 0.0%             | 0.1%            |
| Well # 4                                   | 0.0%             | 0.0%            | 0.0%            | 0.0%             | 0.0%             | 0.0%            | 0.0%            | 0.0%            | 0.0%             | 0.1%            |
| Well # 5                                   | 0.0%             | 0.0%            | 0.0%            | 0.20%            | 0.0%             | 0.0%            | 0.0%            | 0.0%            | 0.0%             | 0.1%            |
| Well # 6                                   | 0.0%             | 0.0%            | 0.0%            | 0.0%             | 0.0%             | 0.0%            | 0.0%            | 0.0%            | 0.0%             | 0.1%            |
| Well # 7                                   | 0.0%             | 0.0%            | 0.0%            | 0.0%             | 0.0%             | 0.0%            | 0.0%            | 0.0%            | 0.0%             | 0.1%            |
| Well # 8                                   | 0.0%             | 8.3%            | 0.2%            | 5.1%             | 0.0%             | 0.0%            | 6.1%            | 0.0%            | 0.0%             | 0.1%            |
| GSP # 8a                                   | 0.0%             | 0.0%            | 0.0%            | 0.0%             | 0.0%             | 5.7%            | 0.0%            | 0.0%            | 0.8%             | 8.3%            |
| GSP # 8b                                   | 0.0%             | 3.5%            | 0.0%            | 0.0%             | 0.0%             | 6.3%            | 0.0%            | 0.0%            | 1.2%             | 0.1%            |
| Well # 9                                   | 0.0%             | 0.1%            | 0.0%            | 0.0%             | 0.0%             | 0.0%            | 0.0%            | 0.0%            | 0.0%             | 0.2%            |
| GSP # 9a                                   | 0.0%             | 0.0%            | 0.0%            | 0.0%             | 0.0%             | 0.0%            | 0.0%            | 0.0%            | 0.0%             | 0.1%            |
| Well # 10                                  | 0.0%             | 1.0%            | 0.0%            | 0.0%             | 0.0%             | 0.0%            | 0.0%            | 0.0%            | 0.0%             | 0.1%            |
| GSP # 10a                                  | 0.0%             | 0.4%            | 0.0%            | 0.0%             | 0.0%             | 0.0%            | 0.0%            | 0.0%            | 0.4%             | 1.4%            |
| Well # 11                                  | 0.0%             | 0.0%            | 0.0%            | 0.0%             | 0.0%             | 0.0%            | 0.0%            | 0.0%            | 0.0%             | 0.1%            |
| GSP # 11a                                  | 23.4%            | 28.7%           | 12.0%           | 5.3%             | 7.3%             | 1.1%            | 5.4%            | 0.0%            | 10.4%            | 16.4%           |
| Well # 12                                  | 5.3%             | 36.1%           | 0.0%            | 11.4%            | 2.4%             | 25.4%           | 27.0%           | 2.1%            | 10.2%            | 27.0%           |
| GSP # 12a                                  | 11.8%            | 29.1%           | 28.0%           | 9.8%             | 15.0%            | 0.0%            | 0.0%            | 0.0%            | 0.6%             | 0.1%            |
| Well # 13                                  | 34.4%            | 41.8%           | 22.1%           | 9.0%             | 17.8%            | 34.3%           | 29.5%           | 9.7%            | 18.9%            | 38.4%           |
| GSP # 13a                                  | 0.6%             | 0.0%            | 0.0%            | 0.0%             | 0.0%             | 0.0%            | 0.0%            | 0.0%            | 0.0%             | 0.1%            |
| Well # 14                                  | 0.0%             | 0.0%            | 0.0%            | 0.0%             | 0.0%             | 0.0%            | 0.0%            | 0.0%            | 0.0%             | 0.1%            |
| GSP # 14a                                  | 0.0%             | 0.9%            | 0.0%            | 0.0%             | 0.0%             | 0.0%            | 0.0%            | 0.0%            | 0.0%             | 0.1%            |
| Well # 15                                  | 0.7%             | 10.7%           | 0.0%            | 0.0%             | 0.0%             | 0.0%            | 0.0%            | 0.0%            | 0.0%             | 0.1%            |
| GSP # 15a                                  | 0.1%             | 11.4%           | 0.0%            | 0.0%             | 0.0%             | 4.3%            | 1.7%            | 0.0%            | 2.0%             | 7.9%            |
| Well # 16                                  | 0.0%             | 6.9%            | 0.0%            | 0.0%             | 0.0%             | 0.0%            | 0.0%            | 0.0%            | 0.0%             | 0.1%            |
| GSP # 16a                                  | 14.9%            | 6.9%            | 0.2%            | 0.0%             | 0.0%             | 0.2%            | 0.2%            | 0.0%            | 0.8%             | 0.1%            |
| Well # 17                                  | 0.3%             | 15.2%           | 7.5%            | 0.0%             | 0.3%             | 0.0%            | 0.7%            | 0.0%            | 0.0%             | 0.1%            |
| GSP # 17a                                  | 0.0%             | 14.4%           | 25.2%           | 0.0%             | 0.4%             | NS              | 9.6%            | 1.0%            | 5.7%             | 10.3%           |
| Well # 18                                  | 0.1%             | 4.8%            | 0.0%            | 0.0%             | 0.0%             | 0.0%            | 0.0%            | 0.0%            | 0.0%             | 0.1%            |
| GSP # 18a                                  | 3.9%             | 0.3%            | 0.0%            | 0.0%             | 0.0%             | 0.1%            | 0.0%            | 0.0%            | 0.0%             | 0.1%            |
| Well # 19                                  | 10.0%            | 51.2%           | 39.7%           | 15.9%            | 3.3%             | 0.0%            | 1.0%            | 0.0%            | 0.0%             | 0.1%            |
| GSP # 19a                                  | 0.0%             | 17.8%           | 0.0%            | 1.0%             | 0.0%             | 9.2%            | 10.2%           | 16.8%           | 10.7%            | 16.4%           |
| Well # 20                                  | 0.0%             | 0.0%            | 0.0%            | 0.0%             | 0.0%             | 0.0%            | 0.0%            | 0.0%            | 0.5%             | 0.1%            |
| GSP # 20a                                  | 0.0%             | 0.0%            | 0.0%            | 0.0%             | 0.0%             | 0.0%            | 0.0%            | 0.0%            | 0.0%             | 0.1%            |
| Well # 21                                  | 0.0%             | 0.0%            | 0.0%            | 0.0%             | 0.0%             | 0.0%            | 0.0%            | 0.0%            | 0.0%             | 0.1%            |
| Well # 22                                  | 0.0%             | 0.0%            | 0.0%            | 0.0%             | 0.0%             | 0.1%            | 0.0%            | 0.0%            | 0.0%             | 0.1%            |
| GSP # 22 @ 5'                              | NS               | NS              | NS              | NS               | NS               | 0.0%            | NS              | NS              | NS               | 0.1%            |
| Well # 23                                  | 0.0%             | 0.0%            | 0.0%            | 0.0%             | 0.0%             | 0.0%            | 0.0%            | 0.0%            | 0.0%             | NS              |
| Flare (F-1)                                | 5.3%             | 5.9%            | 1.6%            | 14.4%            | 9.6%             | 3.2%            | 0.5%            | 0.0%            | 0.0%             | 0.1%            |
| Flare (F-2)                                | 26.5%            | 38.5%           | 33.0%           | 50.7%            | 34.6%            | 31.0%           | 41.5%           | 34.0%           | 16.0%            | 37.5%           |

Note:  
 NS - Not Sampled



TABLE 3  
 ONSITE LOWER EXPLOSIVE LIMITS FROM SEPTEMBER 2006 TO DECEMBER 2008  
 LEGLER LANDFILL (FACILITY No. 1511A)  
 JACKSON TOWNSHIP, OCEAN COUNTY, NEW JERSEY

| Gas Monitoring Well/<br>Gas Sampling Point | LEL<br>(12-06) | LEL<br>(3-07) | LEL<br>(6-07) | LEL<br>(10-07) | LEL<br>(12-07) | LEL<br>(3-08) | LEL<br>(6-08) | LEL<br>(9-08) | LEL<br>(12-08) | LEL<br>(2-09) |
|--|----------------|---------------|---------------|----------------|----------------|---------------|---------------|---------------|----------------|---------------|
| Well # 1                                   | 0.0%           | 0.0%          | 0.0%          | 0.0%           | 0.0%           | 0.0%          | 0.0%          | 0.0%          | 0.0%           | 2.0%          |
| Well # 2                                   | 0.0%           | 0.0%          | 0.0%          | 0.0%           | 0.0%           | 0.0%          | 0.0%          | 0.0%          | 0.0%           | 2.0%          |
| Well # 3                                   | 0.0%           | 0.0%          | 0.0%          | 0.0%           | 0.0%           | 0.0%          | 0.0%          | 0.0%          | 0.0%           | 2.0%          |
| Well # 4                                   | 0.0%           | 0.0%          | 0.0%          | 0.0%           | 0.0%           | 0.0%          | 0.0%          | 0.0%          | 0.0%           | 2.0%          |
| Well # 5                                   | 0.0%           | 0.0%          | 0.0%          | 0.0%           | 0.0%           | 0.0%          | 0.0%          | 0.0%          | 0.0%           | 2.0%          |
| Well # 6                                   | 0.0%           | 0.0%          | 0.0%          | 0.20%          | 0.0%           | 0.0%          | 0.0%          | 0.0%          | 0.0%           | 2.0%          |
| Well # 7                                   | 0.0%           | 0.0%          | 0.0%          | 0.0%           | 0.0%           | 0.0%          | 0.0%          | 0.0%          | 0.0%           | 2.0%          |
| Well # 8                                   | 0.0%           | 0.0%          | 0.0%          | 0.0%           | 0.0%           | 0.0%          | 0.0%          | 0.0%          | 0.0%           | 2.0%          |
| GSP # 8a                                   | 0.0%           | 166.0%        | 4.0%          | 102.0%         | 0.0%           | 114.0%        | 122.0%        | 0.0%          | 16.0%          | 166.0%        |
| GSP # 8b                                   | 0.0%           | 0.0%          | 0.0%          | 0.0%           | 0.0%           | 126.0%        | 0.0%          | 0.0%          | 24.0%          | 2.0%          |
| Well # 9                                   | 0.0%           | 200.0%        | 0.0%          | 0.0%           | 0.0%           | 0.0%          | 0.0%          | 0.0%          | 0.0%           | 4.0%          |
| GSP # 9a                                   | 0.0%           | 0.0%          | 0.0%          | 0.0%           | 0.0%           | 0.0%          | 0.0%          | 0.0%          | 0.0%           | 2.0%          |
| Well # 10                                  | 0.0%           | 20.0%         | 0.0%          | 0.0%           | 0.0%           | 0.0%          | 0.0%          | 0.0%          | 0.0%           | 2.0%          |
| GSP # 10a                                  | 0.0%           | 8.0%          | 0.0%          | 0.0%           | 0.0%           | 0.0%          | 0.0%          | 0.0%          | 8.0%           | 28.0%         |
| Well # 11                                  | 0.0%           | 0.0%          | 0.0%          | 0.0%           | 0.0%           | 0.0%          | 0.0%          | 0.0%          | 0.0%           | 2.0%          |
| GSP # 11a                                  | 568.0%         | 574.0%        | 240.0%        | 106.0%         | 146.0%         | 0.0%          | 0.0%          | 0.0%          | 0.0%           | 2.0%          |
| Well # 12                                  | 106.0%         | 722.0%        | 0.0%          | 228.0%         | 48.0%          | 508.0%        | 108.0%        | 0.0%          | 208.0%         | 328.0%        |
| GSP # 12a                                  | 236.0%         | 582.0%        | 560.0%        | 196.0%         | 300.0%         | 0.0%          | 540.0%        | 42.0%         | 204.0%         | 540.0%        |
| Well # 13                                  | 688.0%         | 836.0%        | 442.0%        | 180.0%         | 356.0%         | 686.0%        | 590.0%        | 194.0%        | 12.0%          | 2.0%          |
| GSP # 13a                                  | 12.0%          | 0.0%          | 0.0%          | 0.0%           | 0.0%           | 0.0%          | 0.0%          | 0.0%          | 378.0%         | 768.0%        |
| Well # 14                                  | 0.0%           | 0.0%          | 0.0%          | 0.0%           | 0.0%           | 0.0%          | 0.0%          | 0.0%          | 0.0%           | 2.0%          |
| GSP # 14a                                  | 0.0%           | 18.0%         | 0.0%          | 0.0%           | 0.0%           | 0.0%          | 0.0%          | 0.0%          | 0.0%           | 2.0%          |
| Well # 15                                  | 14.0%          | 214.0%        | 0.0%          | 0.0%           | 0.0%           | 0.0%          | 0.0%          | 0.0%          | 0.0%           | 2.0%          |
| GSP # 15a                                  | 2.0%           | 228.0%        | 0.0%          | 0.0%           | 0.0%           | 86.0%         | 34.0%         | 0.0%          | 40.0%          | 158.0%        |
| Well # 16                                  | 0.0%           | 138.0%        | 0.0%          | 0.0%           | 0.0%           | 4.0%          | 4.0%          | 0.0%          | 0.0%           | 2.0%          |
| GSP # 16a                                  | 298.0%         | 138.0%        | 0.2%          | 0.0%           | 6.0%           | 0.0%          | 4.0%          | 0.0%          | 12.0%          | 2.0%          |
| Well # 17                                  | 6.0%           | 304.0%        | 150.0%        | 0.0%           | 8.0%           | NS            | 14.0%         | 0.0%          | 114.0%         | 206.0%        |
| GSP # 17a                                  | 0.0%           | 288.0%        | 504.0%        | 0.0%           | 0.0%           | 0.0%          | 0.0%          | 0.0%          | 0.0%           | 2.0%          |
| Well # 18                                  | 2.0%           | 96.0%         | 0.0%          | 0.0%           | 0.0%           | 2.0%          | 0.0%          | 0.0%          | 0.0%           | 2.0%          |
| GSP # 18a                                  | 78.0%          | 6.0%          | 0.0%          | 0.0%           | 0.0%           | 0.0%          | 0.0%          | 0.0%          | 0.0%           | 2.0%          |
| Well # 19                                  | 200.0%         | 1024.0%       | 794.0%        | 318.0%         | 66.0%          | 184.0%        | 204.0%        | 0.0%          | 4.0%           | 2.0%          |
| GSP # 19a                                  | 0.0%           | 356.0%        | 0.0%          | 20.0%          | 0.0%           | 0.0%          | 210.0%        | 336.0%        | 214.0%         | 328.0%        |
| Well # 20                                  | 0.0%           | 0.0%          | 0.0%          | 0.0%           | 0.0%           | 0.0%          | 0.0%          | 0.0%          | 10.0%          | 2.0%          |
| GSP # 20a                                  | 0.0%           | 0.0%          | 0.0%          | 0.0%           | 0.0%           | 0.0%          | 0.0%          | 0.0%          | 0.0%           | 2.0%          |
| Well # 21                                  | 0.0%           | 0.0%          | 0.0%          | 0.0%           | 0.0%           | 0.0%          | 0.0%          | 0.0%          | 0.0%           | 2.0%          |
| Well # 22                                  | 0.0%           | 0.0%          | 0.0%          | 0.0%           | 0.0%           | 0.0%          | 0.0%          | 0.0%          | 0.0%           | 2.0%          |
| GSP # 22 @ 5'                              | NS             | NS            | NS            | NS             | NS             | 2.0%          | 0.0%          | 0.0%          | 0.0%           | 2.0%          |
| Well # 23                                  | 0.0%           | 0.0%          | 0.0%          | 0.0%           | 0.0%           | 0.0%          | 0.0%          | 0.0%          | 0.0%           | NS            |
| Flare (F-1)                                | 106.0%         | 118.0%        | 32.0%         | 288.0%         | 192.0%         | 0.0%          | 0.0%          | 0.0%          | 0.0%           | 2.0%          |
| Flare (F-2)                                | 570.0%         | 770.0%        | 660.0%        | 1014.0%        | 692.0%         | 620.0%        | 830.0%        | 228.0%        | 6.0%           | 28.0%         |
|  |                |               |               |                |                |               |               | 680.0%        | 320.0%         | 750.0%        |

Notes:  
 Highlighted and Bold values exceed regulatory acceptable levels (25% LEL)  
 NS - Not Sampled

TABLE 4

February 11, 2009 - OFFSITE GAS SURVEY RESULTS  
 LEGLER LANDFILL (FACILITY No. 1511A)  
 JACKSON TOWNSHIP, OCEAN COUNTY, NEW JERSEY

| Well No./ Gas Sampling Point | Percent Methane | Percent Lower Explosive Limit | Percent Carbon Dioxide | Percent Oxygen | Comments |
|------------------------------|-----------------|-------------------------------|------------------------|----------------|----------|
| GSP-10 (5')                  | 0.1%            | 2.0%                          | 0.0%                   | 20.0%          |          |
| TWP-11a (5')                 | 0.1%            | 2.0%                          | 9.9%                   | 9.2%           |          |
| GSP-12 (5')                  | 2.9%            | <b>58.0%</b>                  | 6.5%                   | 14.1%          |          |
| GSP-12 (15')                 | 0.1%            | 2.0%                          | 0.0%                   | 20.3%          |          |
| GSP-15 (5')                  | 0.1%            | 2.0%                          | 0.8%                   | 19.6%          |          |
| GSP-17 (5')                  | 0.1%            | 2.0%                          | 2.2%                   | 18.6%          |          |
| GSP-19 (5')                  | 0.2%            | 4.0%                          | 4.3%                   | 15.2%          |          |

Notes:

Background methane levels approximately 0.1% methane

**Background values exceed regulatory acceptable levels (25% LEL)**

TABLE 5  
 OFFSITE METHANE GAS CONCENTRATIONS FROM SEPTEMBER 2006 TO FEBRUARY 2009  
 LEGLER LANDFILL (FACILITY No. 1511A)  
 JACKSON TOWNSHIP, OCEAN COUNTY, NEW JERSEY

| Gas Monitoring Well/<br>Gas Sampling Point | % CH4<br>(12-06) | % CH4<br>(3-07) | % CH4<br>(6-07) | % CH4<br>(10-07) | % CH4<br>(12-07) | % CH4<br>(3-08) | % CH4<br>(6-08) | % CH4<br>(9-08) | % CH4<br>(12-08) | % CH4<br>(2-09) |
|--|------------------|-----------------|-----------------|------------------|------------------|-----------------|-----------------|-----------------|------------------|-----------------|
| GSP-8(5)                                   | NS               | NS              | NS              | 0.0%             | 0.0%             | NS              | NS              | NS              | 0.0%             | NS              |
| GSP-8b(5)                                  | NS               | NS              | NS              | 0.1%             | 0.0%             | NS              | NS              | NS              | NS               | NS              |
| GSP-10(5)                                  | NS               | NS              | NS              | NS               | NS               | NS              | NS              | NS              | NS               | NS              |
| TWP-11a(5)                                 | 0.1%             | 0.5%            | 0.0%            | 0.1%             | 0.0%             | NS              | 6.8%            | NS              | 0.0%             | 0.1%            |
| GSP-11a(15')                               | NS               | NS              | NS              | NS               | NS               | NS              | 4.2%            | NS              | NS               | NS              |
| GSP-11a(25')                               | NS               | NS              | NS              | NS               | NS               | NS              | 0.8%            | NS              | NS               | NS              |
| GSP-12(5)                                  | 0.0%             | 37.6%           | 18.2%           | 38%              | 19.4%            | 4.8%            | 2.4%            | 0.0%            | 0.3%             | 2.9%            |
| GSP-12(15')                                | 0.0%             | 17.1%           | 0.0%            | NS               | 0.0%             | 2.4%            | 0.0%            | NS              | 0.0%             | 0.1%            |
| GSP-12(25')                                | NS               | NS              | NS              | NS               | NS               | 0.7%            | NS              | NS              | NS               | NS              |
| TWP-12a(5)                                 | 4.6%             | 6.3%            | 2.4%            | 6.7%             | 1.6%             | NS              | 2.7%            | 0.0%            | 3.5%             | NS              |
| GSP-12a(15')                               | NS               | NS              | NS              | NS               | NS               | NS              | 27.8%           | NS              | 0.0%             | NS              |
| GSP-12a(25')                               | NS               | NS              | NS              | NS               | NS               | NS              | 0.0%            | NS              | NS               | NS              |
| GSP-13(5)                                  | NS               | NS              | NS              | NS               | NS               | 23.7%           | NS              | NS              | NS               | NS              |
| GSP-13(25')                                | NS               | NS              | NS              | NS               | NS               | 0.0%            | NS              | NS              | NS               | NS              |
| GSP-15(5)                                  | NS               | NS              | NS              | 0.0%             | NS               | 0.0%            | 0.0%            | NS              | 0.0%             | NS              |
| GSP-15a(5')                                | NS               | NS              | NS              | 0.0%             | NS               | NS              | NS              | NS              | NS               | 0.1%            |
| GSP-16(5)                                  | NS               | NS              | NS              | 0.0%             | NS               | NS              | NS              | NS              | NS               | NS              |
| GSP-16a(5')                                | NS               | NS              | NS              | 0.0%             | 0.0%             | 0.0%            | 0.0%            | NS              | 0.0%             | NS              |
| GSP-17(5')                                 | NS               | NS              | NS              | 0.0%             | NS               | NS              | 0.0%            | NS              | NS               | NS              |
| GSP-17(15')                                | NS               | NS              | NS              | 32.7%            | 9.1%             | 0.0%            | 0.0%            | 0.0%            | 0.0%             | 0.1%            |
| GSP-17a(5')                                | NS               | NS              | NS              | NS               | NS               | NS              | NS              | NS              | NS               | NS              |
| GSP-18(5)                                  | NS               | NS              | NS              | 8.8%             | NS               | NS              | NS              | NS              | NS               | NS              |
| GSP-18a(5')                                | NS               | NS              | NS              | 0.0%             | 0.0%             | 0.0%            | NS              | NS              | NS               | NS              |
| GSP-19(5)                                  | NS               | NS              | NS              | 0.0%             | NS               | NS              | 0.0%            | NS              | 0.0%             | NS              |
| GSP-19(15')                                | NS               | NS              | NS              | 1.4%             | 0.0%             | 0.0%            | 0.0%            | 0.0%            | 0.0%             | 0.1%            |
| GSP-19a(5')                                | NS               | NS              | NS              | 0.0%             | NS               | NS              | NS              | NS              | NS               | NS              |
| GSP-22(5')                                 | NS               | NS              | NS              | 0.0%             | NS               | 0.0%            | 0.0%            | NS              | 0.0%             | NS              |

Note:  
 NS - Not Sampled

TABLE 6  
 OFFSITE LOWER EXPLOSIVE LIMITS FROM SEPTEMBER 2006 TO DECEMBER 2008  
 LEGLER LANDFILL (FACILITY No. 1511A)  
 JACKSON TOWNSHIP, OCEAN COUNTY, NEW JERSEY

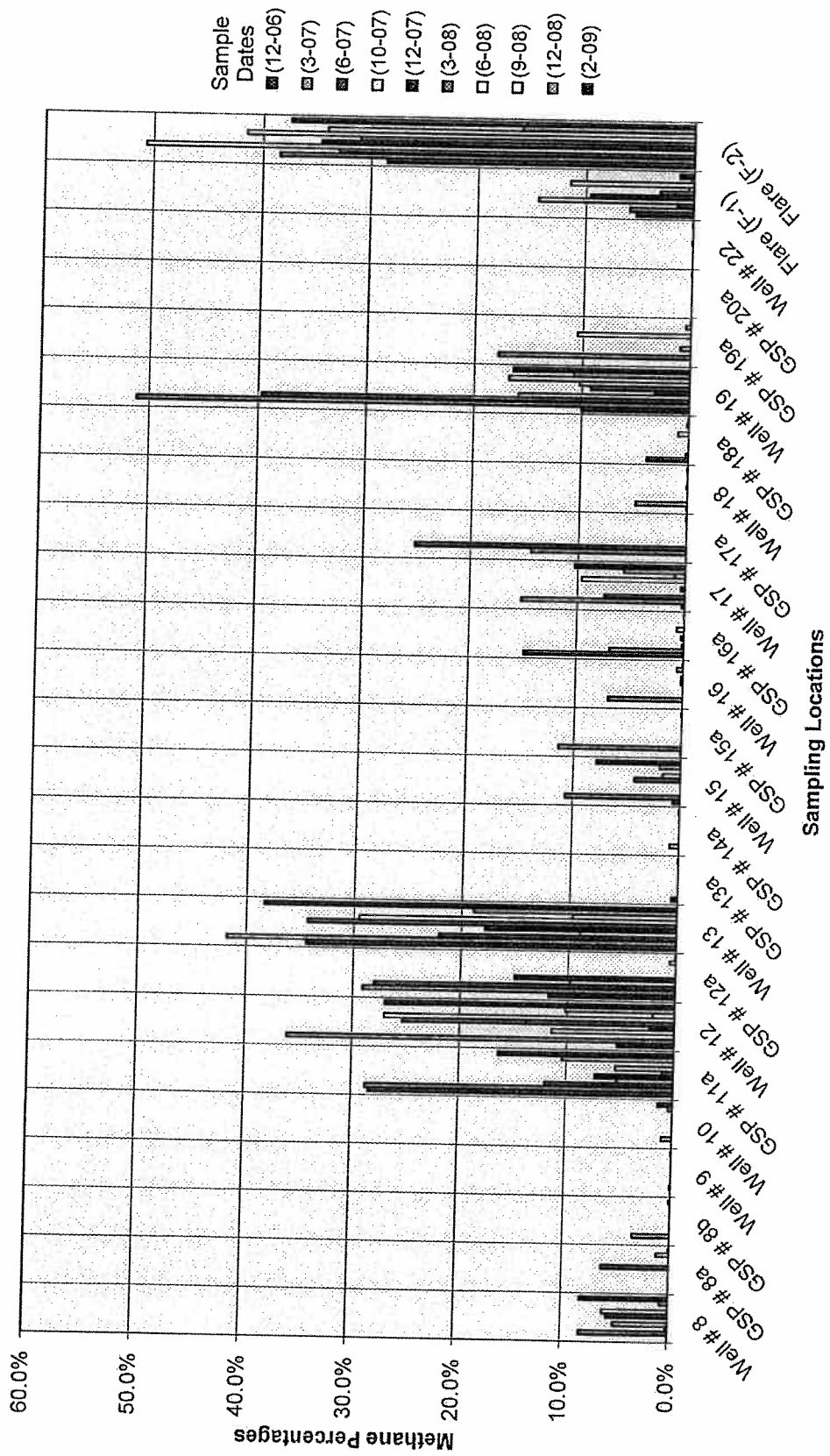
| Gas Monitoring Well/<br>Gas Sampling Point | LEL<br>(12-06) | LEL<br>(3-07) | LEL<br>(6-07) | LEL<br>(10-07) | LEL<br>(12-07) | LEL<br>(3-08) | LEL<br>(6-08) | LEL<br>(9-08) | LEL<br>(12-08) | LEL<br>(12-08) |
|--|----------------|---------------|---------------|----------------|----------------|---------------|---------------|---------------|----------------|----------------|
| GSP-8a(5)                                  | NS             | NS            | NS            | 0.0%           | 0.0%           | NS            | NS            | NS            | 0.0%           | NS             |
| GSP-8b(5)                                  | NS             | NS            | NS            | 2.0%           | 0.0%           | NS            | NS            | NS            | NS             | NS             |
| GSP-10(5)                                  | NS             | NS            | NS            | NS             | NS             | NS            | NS            | NS            | NS             | NS             |
| TWP-11a(5)                                 | 2.0%           | 10.0%         | 0.0%          | 2.0%           | 0.0%           | NS            | NS            | NS            | NS             | 2.0%           |
| GSP-11a(15)                                | NS             | NS            | NS            | NS             | NS             | NS            | 136.0%        | NS            | NS             | 2.0%           |
| GSP-11a(25)                                | NS             | NS            | NS            | NS             | NS             | NS            | 84.0%         | NS            | NS             | NS             |
| GSP-12(5)                                  | 0.0%           | 752.0%        | 364.0%        | NS             | 388.0%         | 96.0%         | 16.0%         | NS            | NS             | NS             |
| GSP-12(15)                                 | 0.0%           | 342.0%        | 0.0%          | NS             | 0.0%           | 48.0%         | 48.0%         | 0.0%          | 0.3%           | 58.0%          |
| GSP-12(25)                                 | NS             | NS            | NS            | NS             | NS             | 14.0%         | 0.0%          | NS            | 0.0%           | 2.0%           |
| GSP-12a(5)                                 | 92.0%          | 126.0%        | 48.0%         | 134.0%         | 32.00%         | NS            | NS            | NS            | NS             | NS             |
| GSP-12a(15)                                | NS             | NS            | NS            | NS             | NS             | NS            | 54.0%         | NS            | 3.5%           | NS             |
| GSP-12a(25)                                | NS             | NS            | NS            | NS             | NS             | NS            | 556.0%        | NS            | 0.0%           | NS             |
| GSP-13(5)                                  | NS             | NS            | NS            | NS             | NS             | NS            | 0.0%          | NS            | NS             | NS             |
| GSP-13(25)                                 | NS             | NS            | NS            | NS             | NS             | 474.0%        | NS            | NS            | NS             | NS             |
| GSP-15(5)                                  | NS             | NS            | NS            | 0.0%           | NS             | 0.0%          | NS            | NS            | NS             | NS             |
| GSP-15a(5)                                 | NS             | NS            | NS            | 0.0%           | NS             | NS            | 0.0%          | NS            | 0.0%           | 2.0%           |
| GSP-16(5)                                  | NS             | NS            | NS            | 0.0%           | NS             | NS            | NS            | NS            | NS             | NS             |
| GSP-16a(5)                                 | NS             | NS            | NS            | 0.0%           | 0.0%           | 0.0%          | 0.0%          | NS            | 0.0%           | NS             |
| GSP-17(5)                                  | NS             | NS            | NS            | 0.0%           | NS             | NS            | NS            | NS            | NS             | NS             |
| GSP-17(15)                                 | NS             | NS            | NS            | 654.0%         | 182.0%         | 0.0%          | 0.0%          | 0.0%          | 0.0%           | 2.0%           |
| GSP17a(5)                                  | NS             | NS            | NS            | NS             | NS             | NS            | NS            | NS            | NS             | 2.0%           |
| GSP18(5)                                   | NS             | NS            | NS            | 176.0%         | NS             | NS            | NS            | NS            | NS             | NS             |
| GSP18a(5)                                  | NS             | NS            | NS            | 0.0%           | 0.0%           | 0.0%          | NS            | NS            | NS             | NS             |
| GSP19(5)                                   | NS             | NS            | NS            | 0.0%           | NS             | NS            | 0.0%          | NS            | NS             | NS             |
| GSP19(15)                                  | NS             | NS            | NS            | 28.0%          | 0.0%           | NS            | 0.0%          | NS            | 0.0%           | NS             |
| GSP19a(5)                                  | NS             | NS            | NS            | 0.0%           | NS             | NS            | NS            | NS            | NS             | 4.0%           |
| GSP-22(5)                                  | NS             | NS            | NS            | 0.0%           | NS             | NS            | 0.0%          | NS            | 0.0%           | NS             |
| GSP-22(5)                                  | NS             | NS            | NS            | NS             | NS             | 0.0%          | NS            | NS            | NS             | NS             |

Note:  
 NS - Not Sampled  
 Highlighted and Bold values exceed regulatory acceptable levels (25% LEL)

***FIGURES***

---

**Figure 1**  
**Changes in Onsite Methane Concentrations**





**Figure 3**  
**Changes in Offsite Methane Concentrations**

