

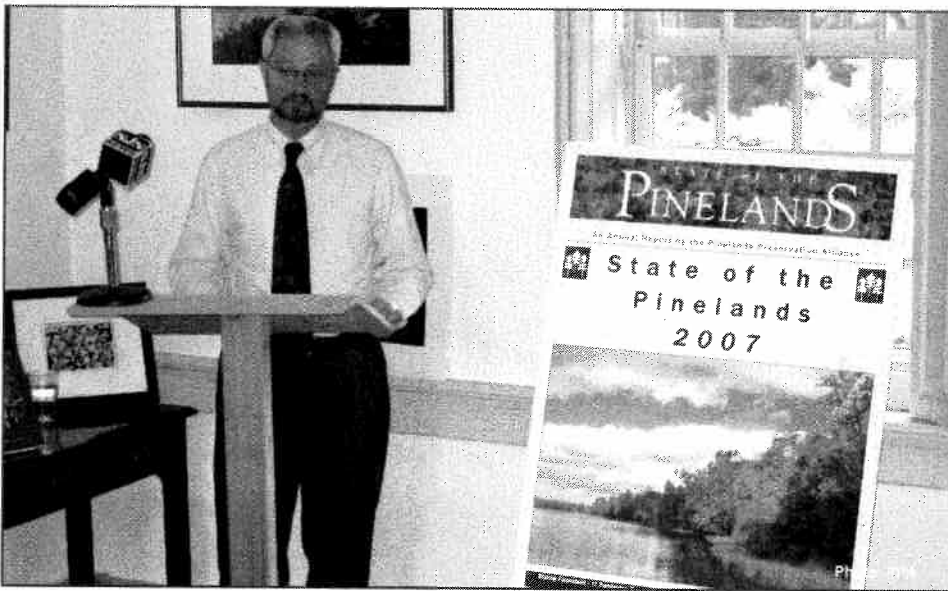
I N S I D E T H E PINELANDS

AUGUST/SEPT. 2007

A Report by the Pinelands Preservation Alliance

VOLUME 14, NUMBER 6

THE STATE OF THE PINELANDS 2007: PPA'S ANNUAL REPORT



Rich Bizub speaks at press conference unveiling 1st annual State of the Pinelands report

by Rich Bizub

This year the Pinelands Preservation Alliance celebrated the 28th anniversary of the signing of New Jersey's Pinelands Protection Act of 1979 with the release of our first annual *State of the Pinelands* report. The report assesses the state of Pinelands preservation and rates how specific actions of government agencies, elected officials and the courts have either helped or harmed the Pinelands since the beginning of 2006. The two words that best describe the intent of the report are, inform and provoke. The *State of the Pinelands* report will be released each year during

the last week of June to coincide with the anniversary date of the signing of the Pinelands Protection Act.

The Pinelands Protection Act was a monumental achievement. The act implemented federal legislation creating the Pinelands National Reserve (PNR), established the Pinelands Commission, and required the creation of a Comprehensive Management Plan (CMP), the rules that govern land use within the 1.1 million acres of the PNR. Last year a milestone was reached, since 2006 marked the 25th anniversary of the CMP. To commemorate this historic event, PPA, the Pinelands

Commission, and other agencies and organizations hosted a banquet and two-day conference on regional planning. On reflection, many wonder how the Pinelands will fare during the next 25 years, considering that New Jersey is the most densely populated state in the nation and still growing. Twenty-five years from now, will we still be celebrating this remarkable achievement, or lamenting that we let it slowly slip away by not holding the government agencies entrusted with its protection to the highest standard?

Since the fate of the Pinelands ultimately rests with decisions by government agencies, PPA realized that a focused approach was needed to inform the public on what typically are complex land-use issues. In addition, this "tool" needed to address actions of other government agencies, not just the Pinelands Commission. There needed to be some way to hold these agencies accountable on an ongoing and cumulative basis. Through the annual *State of the Pinelands* report, we will rate the actions of the Pinelands Commission, New Jersey Department of Environmental Protection, State Legislature, Governor, mayors, local governing bodies, federal agencies and

continued on page 3




In June, the Pinelands Preservation Alliance presented its first annual report on the State of the Pinelands in order to sum up the Pinelands preservation efforts of our state and local government agencies. The report may seem to some readers as a “Okay, but what have you done for us lately?” approach, as we focus most of the report on the areas where we think the Commission and agencies have made poor decisions or not carried out needed reforms. The report is particularly critical of the Pinelands Commission on several issues we feel need greater public attention, including vital policy changes to protect water resources and habitats that have been stalled for too long. Our goal, however, is not to tear down the public servants at these agencies — people who are working hard for that same end. The report instead reflects our deep concern that — for all the incredible successes of the Pinelands Commission and Comprehensive Management Plan over the last 25 years — carrying on as we have been is quite possibly a recipe for disaster in the long run, through the gradual, almost imperceptible destruction of water

quality, draining of aquifers and fragmentation of wildlife and plant habitats. The report can be found on our web site at www.pinelandsalliance.org. We hope you take the opportunity to read it and let us know what you think.



Patt Osborne gets up close and personal with an endangered Corn Snake at the Pinelands Summer Teacher Institute in July

3RD ANNUAL

“TOUR DE PINES”

October 3 - 7

5 day-long bicycle tours
celebrating the Pinelands,
with stops at various locations to
highlight the natural, cultural and
historic treasures of the region
For details call
(609) 859-8860 x24 or email
mikeh@pinelandsalliance.org

PINELANDS

HALL OF FAME

Saturday, November 3, 5 pm

Braddock's Tavern, Medford

**Join us as we honor heroes of
Pinelands preservation!**

For details call Becky at
(609) 859-8860 x21 or email
becky@pinelandsalliance.org

INSIDE THE PINELANDS

*Published six times a year by the
PINELANDS PRESERVATION ALLIANCE*

Executive Editor:
Carleton Montgomery

Editor:
Mike Hunninghake

PPA Staff:

*Richard Bizub, Becky Free, Russell Juelg,
Theresa Lettman, Jaclyn Rhoads, and Jane Wiltshire*

Distributed to:

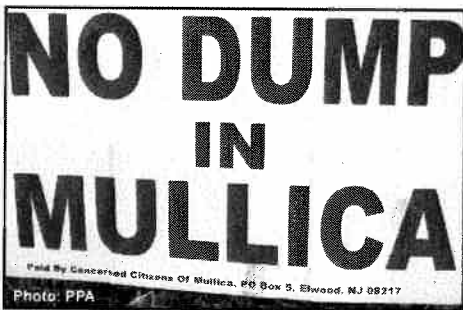
PPA members and volunteers,
state legislators, Pinelands municipalities, elected
officials, planning boards, and selected officials.

Our newsletter is available online at:
www.pinelandsalliance.org

Printed on 100% recycled paper (made from 100% post-
consumer pulp produced in a chlorine-free pulping and
bleaching process)



the courts on an annual basis. Five criteria are used to guide the preparation of the report. They included how agencies: 1) maintain the integrity of the CMP; 2) protect native habitats for plants and wildlife; 3) safeguard water quality in aquifers and surface water; 4) ensure the integrity of water supply, and 5) promote education about the Pinelands.



A waste transfer station in Mullica was denied by the federal district court

This first report highlights a number of cases that raise great concern for the long-term success of the Pinelands. In too many cases, we see the impulse to develop growth zones taking precedence over the core Pinelands principle of protecting Pinelands resources. Key examples from the past year include the Stafford Business Park decision, and the Commission's inability over a period of several years to advance any region-wide policy changes to address the degradation of Pinelands water quality associated with suburban and agricultural development. Even the Medford-Evesham Subregional protection plan and the Commission Science Committee's "White Paper" on preserving water quality — two outstanding initiatives of the past few years —

have been stalled, with no actual implementation of their recommendations.

The report also points out some of the success of the past year. These included the 18th Annual Pinelands Short Course run by the Pinelands Commission, a wonderful educational opportunity. This year the attendance was higher than previous years, indicating that there is a genuine interest in the Pinelands. The New Jersey Department of Environmental Protection committed almost \$2.9 million to restore Batsto Mansion and purchase the James Still homestead building (circa 1850). And a federal district court judge ruled against a property owner interested in building a solid waste transfer station in Mullica Township. The report, therefore, highlights the Good and the Bad.

We anticipate that this annual report will evolve and grow in sophistication with time. We also believe that it is a fair means of judging the scope and nature of environmental issues that PPA tackles on a regular basis. It is our hope that a yearly *State of the Pinelands* report will serve as another tool to ensure that the next 25 years of protecting the Pinelands will be as promising as the last. The complete report, with all the details can be viewed or downloaded from our website at www.pinelandsalliance.org.

PPA VISITS THE NJ MEADOWLANDS

PPA staffers spent a beautiful May day in the Meadowlands, where NJ Meadowlands Commission staff graciously treated us to a tour of their offices and an excellent overview of the regulations governing the Meadowlands and the challenges of promoting environmental protection in such a severely impacted landscape. Some highlights of our visit below.



PPA staff get a Meadowlands overview



An up close view of the marshland



Cruising under a railroad drawbridge



We at the Pinelands Preservation Alliance appreciate all our donors have given us over the years. Your donations of time, money and property have sustained us and helped us to continue advocating for one of New Jersey's most unique natural resources.

Some members support our crucial conservation work by including PPA in their estate plans. These members are part of PPA's Evergreen Society and have made a gift that not only funds our present, but also ensures the future of PPA. Bequests help protect the future of our organization by funding our endowment, thus enabling PPA to advance its important mission for years to come.

You can help protect the Pinelands when you name PPA to receive:

- A specific dollar amount from your estate, or
- A percentage of your estate's value, or
- All or part of the remainder of your estate in your will or trust, or
- All or part of the proceeds of a life insurance policy or retirement plan, or
- A gift of "long term" appreciated securities

A gift through the Evergreen Society can extend the impact of your lifetime philanthropy, as well as provide a more secure future for your loved ones. Careful estate planning preserves your wealth, lowers estate and income taxes, perpetuates your values and provides for your family and loved ones.

Recently, Congress passed the Pension Protection Act of 2006, which permits you to make tax-free contributions to qualified charitable organizations directly from your IRA. This is only

available for payouts in 2006 and 2007. To benefit you must be at least 70 1/2 years of age. No more than \$100,000 can be donated under this new rule in 2007. Making a contribution in this way will reduce your taxable estate. There are some caveats to this rule so be sure to consult your tax attorney first.

If you love the outdoors, if you cherish the joys of nature and want to save New Jersey's wilderness for others, a planned gift to PPA might be for you. Your attorney is the best person to help you decide the form and wording of your bequest or gift to PPA. If you choose to remember PPA in your will a simple codicil is all that is needed and your attorney can help you with the wording. Please contact us for sample wording to take to your attorney.

Please consider leaving a long-lasting legacy, and notify us when you do. To discuss joining the Evergreen Society, contact Director of Philanthropy, Becky Free, at (609) 859-8860 ext. 21 or by email at becky@pinelandsalliance.org.

The New Jersey Pinelands are a scenic treasure - help us keep it that way forever.

**MANAGING THE NJ
PINELANDS FOR PEOPLE,
PLANTS & WILDLIFE
August 15, 7:00 pm**

A FREE workshop about new perspectives in forest management.

See the PPA website for more information. Co-sponsored by PPA and NJ Audubon Society.

Questions or to RSVP, contact:

Elizabeth Ciuzio
NJ Audubon Society
(609) 861-0700 ext. 24

**PINELANDS
DISCOVERY FESTIVAL
Sunday, October 7**

11 am - 4 pm

**Environmental exhibits, walks
and talks, music, food and chil-
dren's activities. Parking \$5.**

Historic Whitesbog Village

Rt. 539, Browns Mills

FAIRS & FESTIVALS

AUGUST 12

**BATSTO PIG IRON 5-K, HISTORY
WALK & KIDS DASHES**

BATSTO VILLAGE

AUGUST 18 & 19

**MONMOUTH COUNTY
FRIENDS OF CLEARWATER
32ND ANNUAL FESTIVAL**

SUNSET PARK, ASBURY PARK

SEPTEMBER 8

**SOUTHAMPTON HISTORICAL
SOCIETY**

SOUTHAMPTON

**SEPTEMBER 15 & 16
24TH WINGS N' WATER
FESTIVAL**

**WETLANDS INSTITUTE
STONE HARBOR**

SEPTEMBER 23

**ARTS IN THE PARK
SMITHVILLE PARK, EASTAMPTON**

**SEPTEMBER 29 & 30
OCEAN COUNTY DECOY &
GUNNING SHOW**

TUCKERTON

OCTOBER 7

**PINELANDS DISCOVERY FESTIVAL
WHITESBOG HISTORIC VILLAGE**



Each year October is proclaimed as Pinelands Month in the state of New Jersey. This year the Pinelands Preservation Alliance is celebrating the 12th year of hosting the gateway event to begin the fall festival season in the Pinelands. The Pinelands Discovery Festival encourages a day of discovery and environmental awareness, while providing a microcosm of the Pinelands experience. Held at Historic Whitesbog Village in Browns Mills, Burlington County, on Sunday, October 7, the event runs from 11am to 4pm. A parking fee of \$5.00 per vehicle will be charged. All events at the festival are free.

The day will include the release of a rehabilitated animal, walking and tractor driven tours, presenters on a wide range of Pinelands subjects, sounds provided by icons in the Pine Barrens music community (Mountain Thunder Drum, Home Cookin', Nancy Longenecker & Medford Station, Valerie Vaughn, Bad Dogz), children's activities, great food, and exhibits that offer a wealth of information.

The presentation schedule will include historian Tim Hart's discussion about The Affair at Cedar Bridge; Russell Juelg, PPA naturalist, will give an overview of Threatened and Endangered Pinelands Animal Species; Ray Young will offer A Glimpse into the Prehistoric Past of New Jersey; Brian Smith will give an Introduction to Geocaching; Richard Dovey will discuss Alternative Energy Resources; and author Barbara Solem-Stull will give a presentation on the Ghost Towns of the Pines.

Historic Whitesbog is the site of the first cultivated blueberry. The surrounding bogs and forest provide an opportunity to view a pinelands ecosystem. Tours will include cranberry bog tours, historic tours of Whitesbog Village, and ecology walks led by naturalists. Tours will continue throughout the day.

A wide variety of exhibitors, artists, nature photographers, and interactive displays will be showcased, all featuring the different facets and crafts of the Pinelands. Many of the region's environmental organizations will be on hand. Information and pamphlets will be available for festival-goers to collect as a resource.

The Tour de Pines, a series of volunteer bicycle rides celebrating the importance of the Pinelands, will arrive at Whitesbog on the afternoon of the festival. Riders are invited to participate in rides from Wednesday through Sunday.

Discover something new about the New Jersey Pinelands!

"The New Jersey Pinelands: a forest of and by the sea"

Sunday, September 16, 1 - 4 pm
Pinelands Visitor Center at the Bishop Farmstead

The closing event for this photographic essay on the effects of light on the natural form in the Pinelands, by photographer Ann-Marie Woods. The exhibit at PPA began in April and will run through September 30. All of the artwork is for sale.

1st Annual Life Science Field Training Institute

PPA held its first annual Life Science Field training Institute in June, designed to assist middle and high school teachers with planning and designing science-based field programs for their students. Ten teachers from across NJ and PA attended the week-long program, travelling to various places throughout the Pinelands, including the Lighthouse Camp in Waretown, Cattus Island County park in Toms River, Rutgers Pinelands Field Station in New Lisbon, and Brigantine Wildlife Management Area. Led by Ron Smith, Haddonfield high school teacher and PPA member, attendees learned about data analysis, population studies and indices, taxonomy, species area curves, and transect sampling.



Photo: PPA
 Sampling quadrats along salt marsh transect at the Lighthouse Camp in Waretown



Photo: PPA
 Sampling grassland at Bishop Farmstead



PPA: How long have you been a member of PPA?

JF: Since 2000.

PPA: What prompted you to become a member?

JF: A developer submitted an application for an active retirement community down the street from my house. The site is forest and contains wetlands and several T&E species. A group of concerned citizens got together to try and persuade our governing body to deny the application. We called many non-profit and environmental groups looking for help and guidance. PPA was fantastic. They helped us organize, gave us valuable insights and information on what we could do, and how to go about it. They helped us set up a database to keep residents informed, aided us in organizing public meetings, and used their publication, "The Pinelands Watch" to educate the people in our community.

PPA: What PPA programs or events have you attended?

JF: As a rule I try to make it to the Pinelands Discovery Festival held every October by PPA. I've attended a threatened and endangered species presentation hosted by Russell Juelg, and a presentation on Pinelands aquifers presented by Rich Bizub, in which Rich explained the delicate balance between our Pinelands rivers and streams and the Kirkwood-Cohansey aquifer. And a nature walk.

PPA: What specific PPA activity has really impressed you?

JF: The way PPA gets involved in development issues that threaten the Pine Barrens and the knowledge and professionalism they bring to the table. When I got involved in the Jackson Valley project I wanted to make a difference and protect something I saw as extremely valuable, but I wasn't sure how. Theresa Lettman

had the knowledge and experience. It was Theresa's dedication and commitment to preserve and save the Pinelands that forced the developer to make concessions and rework their proposal to adhere to our township ordinances.



Janet Fair

PPA: What has PPA done for you, your family or your town?

JF: PPA has inspired me. It is my favorite non-profit organization because I see where the money I donate goes. It goes back into my community. PPA works on so many different levels, helping to educate through special programs and activities. They are there when developers try to negate the Comprehensive Management Plan and are willing to do whatever it takes to make sure growth in the Pinelands is attuned to the unique Pinelands environment.

PPA: Why would you urge others to join PPA?

JF: Because they care about what happens in the Pinelands. They are present and working on behalf of all the people within New Jersey to see that this unique and special ecosystem remains unique and special. They do that by working directly with the people and communities affected by development and through their education and recreation programs. I'm truly amazed at what they are able to accomplish on behalf of us all.

PPA INTERNSHIP

PPA was fortunate to have Andrew Bernard from Moorestown Friends School devote the month of May to assisting us with our work. Andrew worked in the office, got out into the field, and attended Pinelands Commission meetings.

Thanks Andrew, and good luck in your first year at Bates!



Andrew Bernard

PINELANDS WATCH

Get involved in our activist network and help make a difference! To receive the Pinelands Watch or alert us to an issue of concern in your community, call (609) 859-8860 x22 or e-mail theresa@pinelandsalliance.org

PINELANDS COMMISSION MEETINGS

Friday, August 10, 9:30 am

Friday, September 14, 9:30 am

OPEN TO THE PUBLIC

CALL (609) 894-7300 FOR DETAILS

BOARD OF TRUSTEES

Hon. Brendan Byrne
*Honorary Chair
Former Governor,
State of New Jersey*

Howard P. Boyd
*Trustee Emeritus
Pinelands Author*

Beryl Robichaud Collins, Ph.D.
*Trustee Emeritus
Pinelands Author*

David F. Moore
Chair

Leon M. Rosenson, Ph.D.
*Vice Chair
Retired, Liposome Company*

Thomas B. Harvey
*Treasurer
Attorney*

Timothy J. Byrne
*Secretary
Attorney*

Dr. Kevin Browngoehl
Medical Doctor

Robert E. Bruneau
Outdoor Club of South Jersey

Charles M. Chapin
Upper Raritan Watershed Association

Emile DeVito, Ph.D.
New Jersey Conservation Foundation

John Dighton, Ph.D.
Director, Rutgers Pinelands Field Station

Michael Gallaway
Sierra Club

Michael W. Huber
American Littoral Society

Sam Huber
Educator, Trustee, Open Space Institute

Janet N. Larson
League of Women Voters of NJ

Franklin E. Parker
Advisor, Trust for Public Land

Richard J. Sullivan
Proprietor, NJ First, Inc.

James T. B. Tripp, Esq.
*General Counsel,
Environmental Defense Fund*

Robert K. Tucker, Ph.D.
Retired Scientist

Richard Turner
Director, New Jersey Audubon

Gerard Vriens, Ph.D.
Retired Chemical Engineer

Nan Hunter Walnut
Pine Barrens Coalition

Annette Zimmermann
Pinelands Resident

Carleton K. Montgomery
Executive Director, Pinelands Preservation Alliance

PINELANDS CALENDAR OF EVENTS

August & September 2007

NOTE: Names, addresses, and phone numbers are provided here for frequently mentioned event sponsors. Please contact the sponsor of the event for full information and details of the event.

NJ Audubon (NJA), Cape May Observatory, 600 Route 47 North, Cape May Court House, (609) 861-0700

NJ Pinelands Commission (NJPC), 15 Springfield Road, Pemberton Twp., (609)894-7300, info@njpines.state.nj.us

Outdoor Club of South Jersey (OCSJ). Call leaders to confirm trip. www.ocsj.org

Pinelands Institute for Natural & Environmental Studies (P.I.N.E.S.), 120-13 Whitesbog Road, Browns Mills, NJ 08015, Phone: 609-893-1765

Pinelands Preservation Alliance (PPA), 17 Pemberton Rd., Southampton. (609) 859-8860. www.pinelandsalliance.org. 10% discount on Pinelands Adventures programs to PPA members. Pre-registration required for all PPA programs.

Wells Mills County Park (WMCP). Rt. 532, Waretown, (609) 971-3085.

Whitesbog (W). All events meet at the Whitesbog General Store. Historic Whitesbog, mile marker 13, Rt. 530, Pemberton Township, (609) 893-4646, www.whitesbog.org.

Thursday, August 16

Canoe/Kayak Mullica River

We launch at the old Cotton Mill ruins at Atsion at 9:00 am, which are on the south side of the Mullica one-quarter mile off Rt. 206. We paddle about 14 miles to Pleasant Mills. Please contact leaders to confirm trip, logistics and participation. This is a trip for experienced Pines paddlers. Leaders: George & Leona F, (609) 259-3734 or leona@pineypaddlers.com. OCSJ.

Saturday, August 25

Canoe/Kayak North Branch Rancocas Creek

We will paddle either from Greenwood Bridge to Pemberton or from the trailhead behind Burlington County Community College to Smithville Park. Meet at 9 am at the Canoe Trail launch ramp - behind BCCC's Pemberton campus on W. Rancocas Rd. Contact leader to confirm trip participation. Leader: Dave L. Cell (609) 784-4066 or Home (609) 735-9109 or dlynch@dandy.net. OCSJ.

Moonlight Walk (Sturgeon Moon)

1-2 or 3-5 mile walk around the village and bogs, a great opportunity to learn about Whitesbog and discover the seasonal changes of the Pinelands. 7:00 pm. Led by experienced guides. \$5 per person. W.

Sunday, August 26

Shorebirds at Brigantine Van Tour

This is the peak time to see migrant shorebirds at the Forsythe National Wildlife Refuge's Brigantine Unit. The shorebirds should be abundant with over 20 species possible, including some rare ones. Pack a lunch, bug repellent and binoculars. Some walking. Pick-Up: Parking Lot, Wells Mills County Park, Waretown. Time: 8:00 a.m. - 4:00 p.m. Fee: \$14.00 per person. Age: 9 years - Adult. WMCP.

Saturday, September 1

Mullica River Hike & Swim

6-7 miles, moderate pace. We'll dip along the way to keep cool. Wear old swim wear or shorts. Old sneakers or water shoes a must. Bring lunch and beverage. Meet at 10:00 am in woods opposite the Pleasant Mills Church off Rt 542, Between Hammonton and Green Bank. Leader: Christine Denner (856) 461-5379. OCSJ.

Saturday, September 8

Whitesbog Lecture Series: Remembering the Child Labor Controversy - Who Picked Your Cranberries?

1pm. Reservations. \$5 for members. \$7 for nonmembers. Call (609) 893-4646. W.

Chasing Cape May's Early Migrants

Rise early in hopes of catching the "morning flight" of spring migrants in the world-famous Cape May. We will visit the tower near the dike at Higbees Beach Wildlife Management Area for starters. Once the morning flight is over we will visit other popular birding spots in and around Cape May. Pack a lunch, bring binoculars, and be prepared for some walking. Pick-Up: Parking Lot, Wells Mills County Park, Waretown. Time: 5:00 a.m. - 3:00 p.m. Fee: \$14.00 per person. Age: 9 years - Adult. WMCP.

Sunday, September 9

27th Ocean County Bluegrass Festival

Noon thru 5:00pm. Doors open at 11:00am. 131 Wells Mill Road (Rt. 532) Waretown, NJ. (609) 971-1593.

Wednesday, September 19

Pine Barrens Ecology Car Caravan Tour

Enjoy a guided tour featuring swamps, pine and oak forests, cedar water, mudflats and more. Along the way, your feet will stay dry as the "Nature in a Bag" kits bring the Pine Barrens right to your vehicle. Time: 9:30 - 12:00 noon. Location: Whitesbog Village. Cost \$10. Call (609) 893-1765 to reserve space. PINES.

Thursday, September 20

Canoe/Kayak Wading River

The Wading is one of the most popular streams in the Pinelands; but we'll have it to ourselves on a weekday. We'll paddle 10 miles from Hawkins Bridge to Beaver Branch. Meet at 10am. Rentals available from Pine Barrens Canoe Rental at www.pinebarrenscanoe.com Please contact leaders to confirm trip participation. Leaders: George & Leona F. (609) 259-3734 or Leona@pineypaddlers.com. OCSJ.

Saturday, September 29

Moonlight Walk (Harvest Moon)

1-2 or 3-5 mile walk around the village and bogs, a great opportunity to learn about Whitesbog and discover the seasonal changes of the Pinelands. 7:00 pm. Led by experienced guides. \$5 per person. W.

Sunday, October 7

Pinelands Discovery Festival

Join us at historic Whitesbog Village (mile marker 13, Rt. 530, Browns Mills) for a day of environmental exhibits, walks and talks, music, food, and children's activities. 11 am - 4 pm. Call (609) 859-8860 for details. PPA.

If your organization is having an activity you would like to see listed, contact *Inside the Pinelands*, 17 Pemberton Road, Southampton, NJ 08088; ph: (609) 859-8860; e-mail mikeh@pinelandsalliance.org. Next deadline: August 30, 2007.

THE PINELANDS NEEDS YOUR HELP...AND SO DO WE!
PLEASE SUPPORT OUR MISSION & BECOME A MEMBER

Name: _____

Address: _____

City: _____ County: _____ State: _____ Zip: _____

Phone (Day): _____ (Evening): _____

E-Mail: _____

Check enclosed payable to PPA

Mastercard

Visa

Discover

Card Number: _____ Exp. Date: _____

Signature of Card Holder: _____

Membership Categories

- Basic \$35
- Family \$60
- Sponsor \$100
- Patron \$250
- Benefactor \$500
- Chairman's Circle \$1,000
- Other _____

All members receive:

- A PPA membership card
- A year's subscription to *Inside the Pinelands*
- A Free *Pinelands Adventure* (new members)
- A PPA window sticker
- Discounts on PPA merchandise and events

**CHECK OUT OUR
FAIRS & FESTIVALS
SCHEDULE ON PAGE 4**

- A Sponsor will receive an *Exploring the Pine Barrens of New Jersey* map
- A Patron will receive a copy of *Exploring the Pine Barrens of New Jersey* book
- A Benefactor will receive a **Pinelands Botanical Print** by Robin Jess
- A member of the Chairman's Circle will receive a personalized tour of the Pinelands



PINELANDS PRESERVATION ALLIANCE
BISHOP FARMSTEAD
17 PEMBERTON ROAD
SOUTHAMPTON, NJ 08088

ADDRESS SERVICE REQUESTED

Nonprofit Organization
U.S. Postage
PAID
Permit #4
Pemberton, NJ
08068

STATE OF THE PINELANDS 2007

ALSO INSIDE:

PLANNED GIVING - P. 4

PINELANDS DISCOVERY FESTIVAL - P. 5

PPA MEMBERANDUM - P. 6

CALENDAR - P. 7