

I N S I D E T H E PINELANDS

DECEMBER 2006/JAN. 2007 A Report by the Pinelands Preservation Alliance

VOLUME 14, NUMBER 2

REGIONAL PLANNING CONFERENCE & PINELANDS 25TH ANNIVERSARY BANQUET



Pinelands 25th Anniversary Banquet

by Carleton Montgomery

This year marks the 25th anniversary of the Pinelands Comprehensive Management Plan, first adopted in 1981. We at the Pinelands Preservation Alliance believe the Plan has been an extraordinary success in keeping intensive development out of several hundred thousand acres of the Pine Barrens — in the nation's most developed and crowded state. This success is all the more praiseworthy when seen in the context of how Americans elsewhere manage — or fail to manage — growth and all its impacts on open space, water, plants and animals. The Pinelands Plan was at its inception, and remains today, the nation's most innovative and aggressive body of laws for protecting a landscape from destruction by suburban sprawl.

We also see that for all its successes, the Pinelands Plan is neither perfect nor secure for the future. The Plan allows development in some places, and special deal-making for development, that it should not. The Plan says where development should go, but does little to help make sure the growth areas are well-planned and successful. The Pinelands Commission does not always enforce the Plan rigorously or consistently, and a future Commission could choose to drastically weaken the Plan. The Pinelands laws are just that: laws which our legislature could amend or revoke at any time.

So we have a picture of extraordinary success, tempered by some important weaknesses and a deep concern for the future.

When a number of people got together

to talk about how to celebrate the 25th anniversary of the Pinelands Plan, we knew we wanted to do something more than have a celebration among people already involved in the Pinelands. We wanted to spark a broader discussion of regional land use planning, of all the many policy issues, regulatory strategies, and challenges that our society faces in trying to save natural resources and bring about truly sustainable growth in a rapidly suburbanizing region. We wanted an event that would trumpet the Pinelands' successes so others can learn from and apply Pinelands ideas, but would also help us to learn from the successes and setbacks that others have experienced in their efforts.

So we organized the "Regional Planning Comes of Age" conference, which was held on September 28-29 in New Brunswick. The conference focused on regional planning in the mid-Atlantic and Northeast states. It drew 300 people from Virginia, Maine, and everywhere in between. Bruce Babbitt, former Secretary of the Interior and a champion of regional planning, gave the opening keynote address, in which he singled out the Pinelands as the country's foremost regional land use plan. Robert Yaro, President of the Regional Plan

continued on page 3

**TAKE OUR ONLINE
MEMBER SURVEY!**
Visit PPA's Homepage:
www.pinelandsalliance.org




You may have seen some criticism in the press that we held the Pinelands 25th anniversary celebration outside the Pinelands. (See our cover story this month.) While I understand the point, I think the criticism was misplaced for a very important reason: if the Pinelands is to be saved, it will not be saved by the residents of the Pinelands alone, but by the people of New Jersey as a whole. We who live inside the Pinelands boundary cannot do it by ourselves, and since we need the support of the entire state, we also need to get the message of the Pinelands out to as many people as we can. Tying the Pinelands anniversary celebration to a high-level policy conference, and holding it in a very central, very accessible location helped advance that goal.

The mayor of Egg Harbor Township also copied me on a letter in which he said he cannot celebrate the Pinelands anniversary because the Pinelands Plan has forced too much growth on Egg Harbor Township, which has the largest of the Regional Growth Areas assigned by the Plan. Again, I understand the mayor's complaint, but I hope that he, his constituents and others who see the flaws in the Plan can also see its amazing accomplishments.

If not for the Pinelands Plan, municipalities (including Egg Harbor Township) could not have protected their towns

from uncontrolled sprawl. Though some progress has been made in the last few years, our normal statewide laws just do not give towns the tools to really preserve large open spaces through local zoning, and few towns have the resources to fight the knock-down, drag-out legal battles they face when they do try to use those tools aggressively. At best, most towns outside the Pinelands can, if they work hard at it, achieve low-density sprawl with occasional small parks or preserved farms — a far cry from the protection of vast stretches of forest and wetlands from environmentally incompatible uses that the Pinelands Plan has achieved for hundreds of thousands of acres in the Pine Barrens.

So while I share a lot of very real disappointments over places that the Pinelands Plan has allowed to be converted from forest or field into housing developments, schools and strip malls, I also recognize the Plan's genuine and unique achievements. In fact, the Pinelands Preservation Alliance long ago decided that the best way to protect the most Pinelands habitat and resources is to support — not oppose — the Pinelands Comprehensive Management Plan, and to fight to make it better and to ensure it is applied rigorously and consistently. I think we have done well in meeting that goal. I hope our readers agree. If not, be sure to let me know!

The Special Pinelands Plants Course of 2006, "Plant Families of the Pinelands," organized by PPA, was a great success, due to the innovative and thorough work of instructors Wayne Ferren and Bill Olson. In six sessions, they steered the class through the morphology of most of the families of the region, clarifying the concepts and terminology via lectures, drawings, specimens, and plant dissection. The classroom work was supplemented by several field trips, during which the class encountered rarities such as *Xyris fimbriata*, *Rhynchospora cephalantha*, and *Schizaea pusilla*.

PPA MEMBER SURVEY

Please take a few minutes to help us improve our communications with our members and supporters and identify opportunities to develop new programs.

Survey respondents are eligible for a \$100 value prize basket!

To take the survey, go online to:

www.pinelandsalliance.org

Not on the web? Call (609) 859-8860 x24 to request a paper copy.

INSIDE THE PINELANDS

Published six times a year by the
PINELANDS PRESERVATION ALLIANCE

Executive Editor:
Carleton Montgomery

Editor:
Mike Hunninghake

PPA Staff:
Richard Bizub, Diana Byrd, Russ Juelg,
Theresa Lettman and Jaclyn Rhoads

Distributed to:
PPA members and volunteers,
state legislators, Pinelands municipalities, elected
officials, planning boards, and selected officials.

Our newsletter is available online at:
www.pinelandsalliance.org

Printed on 30% recycled paper





Photo: PPA

Frank Parker accepting Hall of Fame award Association, showed us the surprising number and extent of regional planning efforts now underway in this part of the country. Eighty-four experts in a wide range of fields led 37 different breakout seminars on topics like protecting threatened and endangered species through regional planning, social equity in regional planning, and how to plan for growth. The conference closed with a plenary address by Doug Foy, recently retired Secretary of Commonwealth Development of the state of Massachusetts, who spoke eloquently of the critical role that successful cities play in limiting sprawl and in controlling the greenhouse gases that are driving global climate change today.



Photo: PPA

Delaware Bayshore seminar

We did not neglect the celebration! A banquet was held as part of the conference specifically to celebrate the Pinelands anniversary. The dinner was attended by 275 people, including many PPA members and supporters. At the dinner, Pinelands Preservation

Alliance inducted Frank Parker, first Chair of the Pinelands Commission, and Terry Moore, first Executive Director of the Commission, into the Pine Barrens Hall of Fame. Speakers recounted the turbulent founding of the Pinelands Plan and praised the activists, and the leaders such as Brendan Byrne, Jim Florio, Frank Parker and Terry Moore, who steered the Pinelands Protection Act and Comprehensive Management Plan through stormy waters to their adoption.



Photo: NJ Pinelands Commission

Terry Moore speaking about the history of the Pinelands Plan

Pinelands Preservation Alliance was the lead organizer of the conference and celebration, and the Alliance chaired a steering committee that included representatives of the agencies listed at right. The conference and banquet received financial support from a number of foundations, government and nonprofit agencies, professional firms and corporations, which are also listed in the panel at right.

We believe the conference was a great success, not only in celebrating the Pinelands, but also in beginning a broader dialogue and strengthening the work of people who believe the many growth and environmental challenges we face today require innovative, regional planning of how we use and change the landscapes in which we live.

STEERING COMMITTEE MEMBERS

AMERICAN PLANNING ASSOCIATION

ASSOCIATION OF NJ ENVIRONMENTAL COMMISSIONS

CONSERVATION RESOURCES, INC.

DELAWARE RIVER BASIN COMMISSION

DELAWARE VALLEY REGIONAL PLANNING COMMISSION

DEPARTMENT OF ENVIRONMENTAL PROTECTION

NJ MEADOWLANDS COMMISSION

NATIONAL PARK SERVICE

NEW JERSEY CONSERVATION FOUNDATION

NEW JERSEY LEAGUE OF MUNICIPALITIES

NEW JERSEY OFFICE OF SMART GROWTH

NJ PINELANDS COMMISSION

PINELANDS MUNICIPAL COUNCIL

REGIONAL PLAN ASSOCIATION

THE NATURE CONSERVANCY

SPONSORS, PATRONS AND SUPPORTERS

FUND FOR NEW JERSEY, GERALDINE R. DODGE FOUNDATION, WILLIAM PENN FOUNDATION, NATIONAL PARK SERVICE, PSE&G, PINELANDS PRESERVATION ALLIANCE, NJ MEADOWLANDS COMMISSION, NJ CONSERVATION FOUNDATION, NJ PINELANDS COMMISSION, ARCHER & GREINER, ATLANTIC CITY ELECTRIC, CONSERVE WILDLIFE FOUNDATION OF NJ, GENOVA BURNS & VERNOLA, HERPETOLOGICAL ASSOCIATES, JOHNSON & JOHNSON, MARESSA-PATTERSON, LLC, TITLE AMERICA AGENCY CORP., AMY S. GREENE ASSOCIATES, CENTER FOR URBAN WATERSHED RENEWAL, CONSERVATION RESOURCES, INC., ENVIRONMENTAL RESOLUTIONS, MARAZITTI, FALCON & HEALEY, PLEXUS PUBLISHING, SCHOOR DEPALMA, TAYLOR, WISEMAN & TAYLOR



At the end of each year, it has become customary for PPA to provide a sampling of the past years' events and government decisions that will impact the Pinelands, and rate them accordingly. Again, this is just a fraction of what PPA and other like-minded organizations have been involved with either directly or indirectly over the past 12 months.

The Governor

Still Waiting



Of the fifteen-member Pinelands Commission, one member is appointed by the U.S. Secretary of the Interior and one member appointed by each freeholder board of the seven counties with land holdings in the Pinelands. The Governor also appoints seven members. At present there are one gubernatorial vacancy and three (3) expired terms of existing commissioners. It is important that the Governor maintain a strong Commission by filling the vacancy, and appointing conservation-minded commissioners.

Pinelands Commission

Dangerous Adventure



By a vote of 9 to 4 the Commission approved a memorandum of agreement (MOA) to allow a private developer to build several hundred homes and a shopping center, destroying critical habitats of threatened and endangered species, on and around the old landfills at the Stafford Business Park. In exchange for getting a pass on T&E habitat protections, the developer is paying for the town's obligation to "cap" the landfills. For the first time in its history, the Commission know-

ingly authorized destruction of legally-protected T&E habitats, and approved a massive private, for-profit development through a negotiation process that is supposed to be reserved for "public development" alone. PPA and others vigorously opposed this



Pine snake den, Stafford Landfill

misguided proposal, but in the end the Commission embraced this process for trading environmental protections for private financing of public obligations. It doesn't take much imagination to see where this way of doing business could lead the Pinelands.

A Step in the Right Direction



The Pinelands Commission, along with Medford and Evesham Townships, endorsed a new resource conservation plan for 22 square miles of the two municipalities. This area includes the famous Sanctuary development and much else. The plan calls for zoning changes, innovative transfer of development rights and clustering rules, and land acquisitions to protect water quality and rare species habitats in a part of the Pinelands that was erroneously designated for growth in the original Comprehensive Management Plan — before people realized what exceptional Pine Barrens resources are found there. Now the big question is how long it will take the Commission and the two

municipalities to implement the conservation plan through rule changes and acquisitions.

NJ Department of Environmental Protection

Inaction



The silence was disappointing when the Department of Environmental Protection gave a pass on protecting threatened pine snakes so the Commission could approve the Stafford Business Park development (see above). PPA and others urged the Department to step in and apply the state laws for threatened and endangered wildlife, but the Department chose not to, in conflict with the advice of the Department's own wildlife biologists.



Batsto Mansion

Cash for the Past



Kudos to the NJDEP for recognizing the importance of preserving cultural and historic resources of the Pinelands by committing to invest \$2 million for the restoration of Batsto Mansion and its recent acquisition of the James Still Homestead for \$875,000. Batsto Mansion is the centerpiece of Batsto Village, a bog iron and glassmaking center from 1766 to 1867. James Still,

the son of former slaves and medical practitioner, was renowned for his botanical remedies. The Still office building (circa 1850's) was at risk of being demolished to make way for commercial development.



Water for Grass Denied

The Department denied requests by a homeowners association in Jackson Township and a golf course in Egg Harbor Township for additional water for the exclusive purpose of watering grass. They were seeking an increase in their allocation of 2.2 million gallons per month, and 14.76 million gallons per month, respectively. PPA requested a public hearing for both applications and provided testimony requesting that both applications be denied.

Courts



Trash Train Derailed

A federal district court judge has ruled against a railroad company and property owner interested in building a solid waste transfer station in Mullica Township. PPA participated in the case on the side of the Pinelands Commission as a "friend of the court." The defendants asserted that the proposed solid waste transfer station is not subject to Pinelands regulations because federal laws governing railroad facilities overrule state law. The

judge saw through this ruse and ruled in favor of the Pinelands Commission. This is one train that won't be getting out of the station any time soon.



Double track ORV ruts

Local Governments



Municipalities Get Tough

Having reached their limit with illegal Off-Road Vehicle (ORV) use, twenty-eight municipalities have responded to a request by PPA to implement ORV ordinances. Many municipalities answered this call by either establishing ordinances or increasing fines of existing ordinances for illegal riders. Some of the first municipalities to respond included Buena Vista, Barnegat, Lacey, Plumsted, Woodland and Woodbine.

Pinelands Advocates



Milestones

This year the Rancocas Conservancy has a number of achievements to celebrate. In June they celebrated their 15th anniversary, and in that same month they hosted the first ever Rancocas Festival. In addition to these milestones, in September the Conservancy surpassed the 1,000-acre mark in their efforts to preserve land throughout the Rancocas Watershed.

PINELANDS COMMISSION MEETINGS

Friday, December 8, 9:30am

January TBA

OPEN TO THE PUBLIC

CALL (609) 894-7300 FOR DETAILS

FAIRS & FESTIVALS

SATURDAY, FEBRUARY 3

CUMBERLAND COUNTY WINTER

EAGLE FESTIVAL

MAURICETOWN

PINELANDS DISCOVERY FESTIVAL: THANK YOU!

PPA wishes to offer our appreciation to the following groups and individuals that made this event possible:

Ann-Marie Woods

Jean Conti

Janet Jackson-Gould

Nancy Longnecker

Mark Ehlenfeldt

Dan Rappoport

Burlington County College

Woodford Cedar Run Wildlife Refuge

Pinelands Antique Engines Association

Whitesbog Preservation Trust

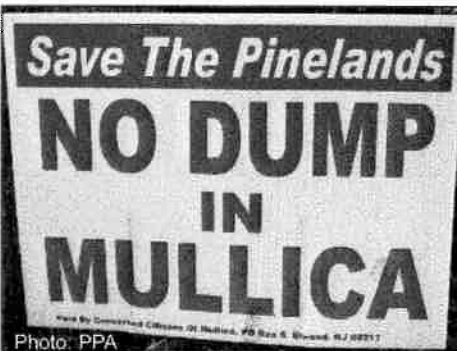
Brendan Byrne State Forest

Pemberton Township

Pinelands Institute for Natural and Environmental Studies at Burlington County College

Burlington County College

WBZC 88.9FM

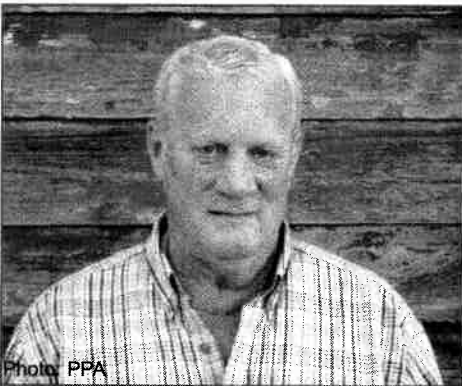




PPA: How long have you been a member of PPA?

LH: From the very beginning in 1989, when PPA was operating out of 3 or 4 rented rooms in Elizabeth White's house in Whitesbog Village

PPA: What prompted you to become a member?



LH: I had been poking around the Pine Barrens since the early 1960's with interests in ecology and history, and instinctively knew that this was a place which had to be preserved. Several environmental organizations to which I belonged had missions which only partially included Pine Barrens issues. Finally, when PPA was formed with its sole mission to "protect and preserve the resources of the NJ Pinelands", I fairly leapt at the chance to join and volunteer in any way that I could.

PPA: What PPA programs or events have you attended?

LH: I have attended many field trips, van and bus tours, rallies, town meetings, symposia, lectures and festivals.

PPA: What specific PPA activity has really impressed you?

LH: The activity that I admire most is the fact that since its inception and to the present, the PPA staff and board of trustees have always been composed of the right people at the right time to get the job done.

PPA: What has PPA done for you or your family?

LH: Because of my longtime involvement with PPA, I have been rewarded by the knowledge of how the government operates and how non-profit advocacy organizations work. PPA has also exposed me to more places and knowledgeable people in the Pinelands than I could have imagined. Some of my volunteer activities over the years have been more rewarding experiences for me personally than for PPA, but I have to think that I've contributed positively to the Alliance.

PPA: Why would you urge others to join PPA?

LH: For anyone who has an interest in protecting and preserving the NJ Pinelands to not join PPA is almost incomprehensible. It is the premier Pinelands advocacy group, has an excellent track record, offers myriad educational and volunteer activities, and will more personally connect you to the Pine Barrens environment than any other organization anywhere.

Tour de Pines Wrap Up

PPA wishes to thank the following people who bicycled at least one day (and sometimes two or three days!) of the 2nd Annual Tour de Pines and made it a great success!

Loretta Connitto, Mark Conolly, Vicki Debaets, Joe DeMarie, Michelle Drezler, Helen Dudar, Tina Good, Tara King, Wayne Lambert, Warren Marchioni, Jim Moten, Joe Perrine, Tom Piccuci, Jr., Tom Piccuci, Sr., Bob Pickus, Loretta Pickus, Valerie Polding, Kim Russ, Barbara Signorelli, Terry Snyder, Mike Thompson, Christine Torello and OUR TOUR LEADER, DAN RAPPOPT



Tour de Pines riders taking a break in historic Smithville on Saturday's ride



Resting their legs along the shore after the Friday Corson's Inlet Lighthouse ride

BOARD OF TRUSTEES

Hon. Brendan Byrne
*Honorary Chair
Former Governor,
State of New Jersey*

Howard P. Boyd
*Trustee Emeritus
Pinelands Author*

Beryl Robichaud Collins, Ph.D.
*Trustee Emeritus
Pinelands Author*

David O. Johnson
*Trustee Emeritus
Graphic Arts Consultant*

David F. Moore
Chair

Leon M. Rosenson, Ph.D.
*Vice Chair
Retired, Liposome Company*

Thomas B. Harvey
*Treasurer
Attorney*

Timothy J. Byrne
*Secretary
Attorney*

Dr. Kevin Browngoehl
Medical Doctor

Robert E. Bruneau
Outdoor Club of South Jersey

Charles M. Chapin
Upper Raritan Watershed Association

Sara deCelis Little
Attorney

Emile DeVito, Ph.D.
New Jersey Conservation Foundation

John Dighton, Ph.D.
Director, Rutgers Pinelands Field Station

Michael Galloway
Sierra Club

Michael W. Huber
American Littoral Society

Sam Huber
Educator; Trustee, Open Space Institute

Janet N. Larson
League of Women Voters of NJ

Franklin E. Parker
Advisor, Trust for Public Land

Richard J. Sullivan
Proprietor, NJ First, Inc.

James T. B. Tripp, Esq.
*General Counsel,
Environmental Defense Fund*

Robert K. Tucker, Ph.D.
Stony Brook-Millstone Watershed Association

Gerard Vriens, Ph.D.
Retired Chemical Engineer

Nan Hunter Walnut
Pine Barrens Coalition

Annette Zimmermann
Pinelands Resident

Carleton K. Montgomery
Executive Director, Pinelands Preservation Alliance

PINELANDS CALENDAR OF EVENTS

December 2006 & January 2007

NOTE: Names, addresses, and phone numbers are provided here for frequently mentioned event sponsors. Please contact the sponsor of the event for full information and details of the event.

Albert Music Hall (AMH) 131 Rt. 532, Warctown, (609) 971-1593.

NJ Audubon (NJA), Cape May Observatory, 600 Route 47 North, Cape May Court House, (609) 861-0700.

Outdoor Club of South Jersey (OCSJ). Call leaders to confirm trip. www.ocsj.org

Pinelands Preservation Alliance (PPA), 17 Pemberton Rd., Southampton, (609) 859-8860. www.pinelandsalliance.org. 10% discount on Pinelands Adventures programs to PPA members. Pre-registration required for all PPA programs.

Tuckerton Seaport (TS), 120 West Main Street, Tuckerton, www.tuckertonseaport.org, (609) 296 - 8868.

Wells Mills County Park (WMCP), Rt. 532, Warctown, (609) 971-3085.

Whitesbog (W). All events meet at the Whitesbog General Store. Historic Whitesbog, mile marker 13, Rt. 530, Pemberton Township, (609) 893-4646, www.whitesbog.org.

Saturday, December 2

Eyre Haven Folk Club at the Hunting Shanty

Guest Musician Bonnie Leigh, dulcimer player. Bonnie will perform and conduct a workshop on dulcimer playing. Visit www.bonnieleigh.com. Tuckerton Seaport. 7:00 p.m. Call (609) 296-4089 for reservations. \$10 donation for guest musician. TS.

Friday, December 8

Jersey Devil Hunt

Location to be announced to registrants. We start with an old-fashioned campfire (bring your hot dogs & marshmallows!) We calm our nerves with some good, old-time music. Then, with a little ghostly light from the moon, we search the woods, cautiously, for that most infamous denizen of the Pine Barrens. 7-10 pm, pre-registration required. \$10. PPA.

Sunday, December 10

Big Swamp Cougar Hunt

Be prepared for some rugged trekking, as we'll be going into places few others go. Dress wisely, and pack a lunch and drinks. We'll examine our surroundings for cougar sign as we pass through some of the most remote locations in the

Pinelands. 9 am - 4 pm. \$35. Pre-registration required. Meets at Batsto Village Visitor Center in Wharton State Forest. PPA.

Saturday, December 9

Albert Music Hall Holiday Celebration.

Music: 7:30-11:30pm. Adults: \$5, Children: \$1. AMH.

Owl-y Haunts

Join Pat Sutton for an afternoon and sunset afield to explore two wintering sites that draw Short-eared Owls, Rough-legged Hawks, Bald and Golden Eagles, and other raptors each winter: Manahawkin WMA and Cedar Run Dock Road. Chances are good that some birds have already settled in. Limit: 20. 2-5pm. Pre-registration required. Cost: \$15 members, \$25 nonmembers. (609) 861-0700. NJA.

Winter Celebration at Whitesbog

Make crafts using gifts from Mother Nature, or help Santa round up his reindeer (nature walk and candy cane find). Pictures with Santa available - donation. 1:00pm. \$5 per person. W.

Monday, December 11

Winter Coastal Birds

Now is the time to start looking at all our coastal birds as winter approaches. New populations of ducks, gulls and other seabirds are beginning to show up. Amongst them we can almost always expect to find a rarity, such as eiders, kittiwakes, and murres. We will also discuss the best locations for viewing in New Jersey and Ocean County. 7-9pm. \$2 per person. WMCP.

Sunday, December 17

Atsion Hike

7-8 miles, moderate to brisk pace. We'll hike on roads and trails to our lunch stop at Goshen Pond, with a view of some old beaver lodges. Meet at 10am at Atsion. Leaders: Christine Denneler, (856) 461-5379. Pat Burton, (856) 767-8064. OCSJ.

Thursday, December 21

Celebrate the Winter Solstice on the Wading River

We'll paddle 6 miles from Hawkin Bridge to Evans Bridge. Join us for our annual solstice celebration as the sun begins anew its journey to longer days. Contact leaders to confirm trip. Meet at 10am. Leaders: George & Leona F, (609) 259-3734 or leona@pincypaddlers.com. OCSJ.

Saturday, December 23

Annual Christmas Hike

7-8 miles, moderate pace. The tradition continues. A festive hike as we renew old friendships, reminisce about past events, partake of holiday treats on the tailgate, get into a holiday mood. Meet at 10am opposite the campsites, Byrne S.F. Entrance is off Rt. 72, one mile SE of jet. Rts 70/72. Follow signs. Leaders: Joseph Trujillo, (856) 468-4849. Christine Denneler, (856) 461-5379. OCSJ.

Saturday, December 30

Friendly Friendship Hike

9-10 miles, moderate pace. Hike the old bogs and a side trip to the Blueberry Monument. Could be wet in spots. Bring lunch. Meet at Friendship at 10am. Leaders: Dave and Julie Hegelcin, (825) 235-8792. OCSJ.

Monday, January 1

New Year's Day on the Oswego River

Meet at 10am at Lake Oswego and paddle one of the most beautiful Pineland rivers. Tailgate picnic after the paddle - bring something to share! Please contact leaders to confirm trip and your participation. Leaders: George & Leona F, (609) 259-3734 or leona@pincypaddlers.com. OCSJ.

Saturday, January 13

Whitesbog Nature and History Walk

Traveling to Browns Mills. Join us as we explore this preserved company town - home of the first cultivated blueberry. Meet at Parking Lot, Wells Mills County Park, Warctown. 9:00 a.m. - Noon. \$4.00 per person, 9 years - Adult. WMCP.

Wednesday, January 17

Lunch and Learn Speaker Series

Mike Celestino from the NJ Department of Environmental Protection Bureau of Shellfisheries reports on the the drastic decline of hard clams and potential reasons for the decline. Presented by Jacques Cousteau National Estuary Research Reserve and Tuckerton Seaport. 12:30pm. TS.

If your organization is having an activity you would like to see listed, contact *Inside the Pinelands*, 17 Pemberton Road, Southampton, NJ 08088; ph: (609) 859-8860; e-mail mikeh@pinelandsalliance.org. Next deadline: Jan. 5, 2007.

THE PINELANDS NEEDS YOUR HELP...AND SO DO WE!
PLEASE SUPPORT OUR MISSION & BECOME A MEMBER

Name: _____

Address: _____

City: _____ County: _____ State: _____ Zip: _____

Phone (Day): _____ (Evening): _____

E-Mail: _____

Check enclosed payable to PPA

Mastercard

Visa

Discover

Card Number: _____ Exp. Date: _____

Signature of Card Holder: _____

Membership Categories

- Basic \$35
Family \$60
Sponsor \$100
Patron \$250
Benefactor \$500
Chairman's Circle \$1,000
Other _____

All members receive:
A PPA membership card
A year's subscription to *Inside the Pinelands*
A Free *Pinelands Adventure* (new members)
A PPA window sticker
Discounts on PPA merchandise and events

**WHY NOT GIVE A PPA
MEMBERSHIP AS A
HOLIDAY GIFT?**

A Sponsor will receive an *Exploring the Pine Barrens of New Jersey* map
A Patron will receive a copy of *Exploring the Pine Barrens of New Jersey* book
A Benefactor will receive a Pinelands Botanical Print by Robin Jess
A member of the Chairman's Circle will receive a personalized tour of the Pinelands



PINELANDS PRESERVATION ALLIANCE
BISHOP FARMSTEAD
17 PEMBERTON ROAD
SOUTHAMPTON, NJ 08088

ADDRESS SERVICE REQUESTED

Nonprofit Organization
U.S. Postage
PAID
Permit #4
Pemberton, NJ
08068

REGIONAL PLANNING CONFERENCE & PINELANDS BANQUET/
HITS AND MISSES OF 2006