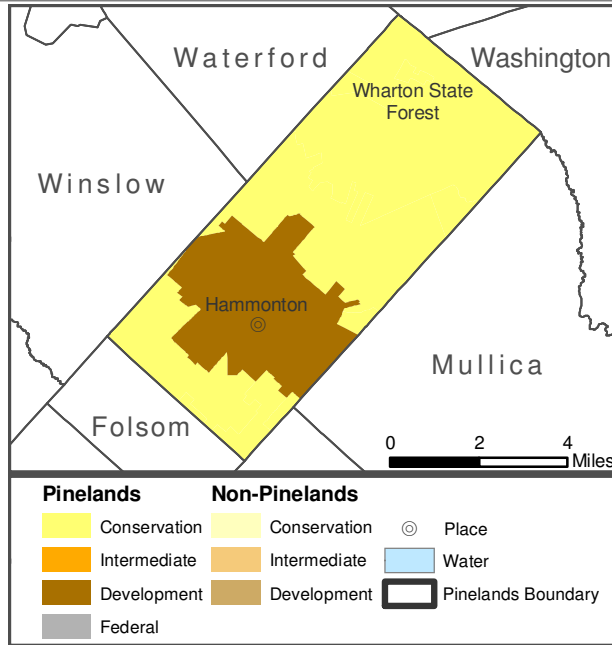


Hammonton Town, Atlantic County

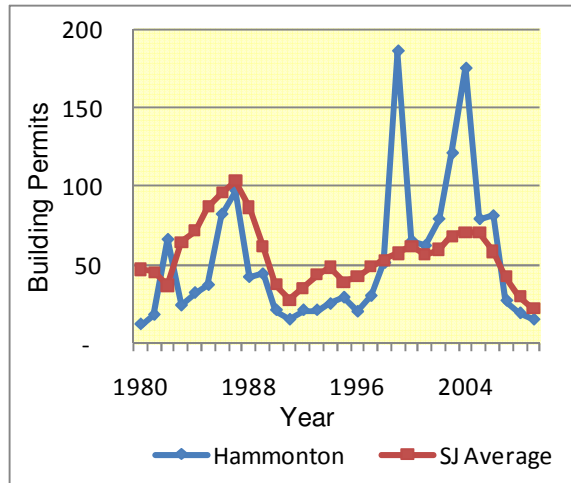
% Population in Pinelands Area: 100% (12,604 residents / 12,604 total)

% of Housing Units in Pinelands Area: 100% (4,843 units / 4,843 total)

% Land in Pinelands Area: 100% (26,581 acres / 26,581 total)



**Building Permits
1980 - 2009**



Preserv	Forest	Ag Prod	Special Ag Prod	Rural Dev	Regional Growth	Pine Town	Pine Village	Military & Federal	
33%	5%	33%	2%			26%			
				Municipal Value	South Jersey Municipal Avg	South Jersey Municipal Rank			
Population Estimate 2009				13,433	11,978	49			
Population Density 2009 (per sq mile)				325.6	2,020.5	154			
Population Change 1999 – 2009				7.0%	7.0%	77			
Land Area (sq miles) 2000				41.0	17.8	34			
% Land State-Owned Open Space 2009				35.4%	8.4%	16			
Assessed Acres of Farmland 2008				6,768	2,303	28			
Building Permits 2009				15	22	60			
Residential Housing Transactions 2009				94	25.6	54			
Median Sale Price of Homes 2009				\$217,333	\$226,800	110			
Equalized Value of Property 2009(Million\$)				\$1,526.3	\$1,685.5	59			
Effective Tax Rate 2009				1.92	2.02	118			
Average Residential Property Tax Bill 2009				\$4,536	\$5,195.5	125			
Per Capita Income 2000 (in 2000 Dollars)				\$19,889	\$23,813	137			
Unemployment Rate 2009				15.6%	10.0	18			
Establishments 2002	Agric	Mining	Constru	Manufac	Wholsal & Retail	Utils & Trans	Services	Public	UnClass
519	10%		15%	3%	22%	4%	45%	2%	1%
Assessment Class Proportions in Municipal Valuations 2006			Vacant	Residential	Agricultural	Commercial	Industrial	Apartment	
			3%	73%	3%	17%	3%	1%	