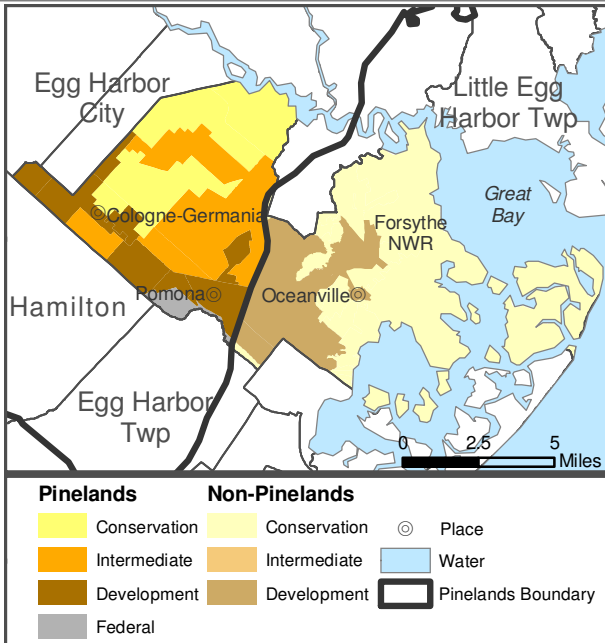


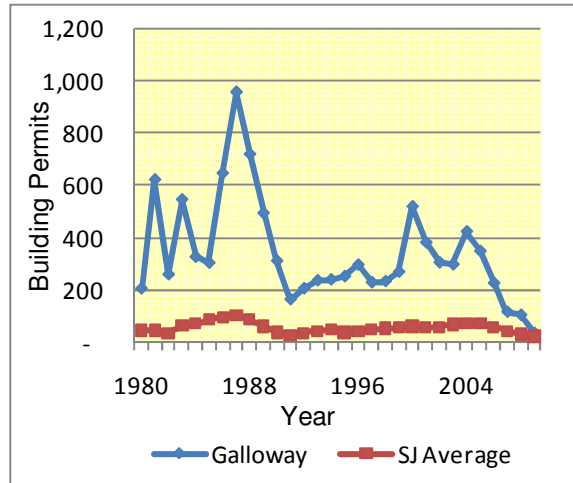
Galloway Township, Atlantic County

% Population in Pinelands Area: 34% (10,658 residents / 31,209 total)
 % of Housing Units in Pinelands Area: 28% (3,194 units / 11,406 total)
 % Land in Pinelands Area: 38% (27,005 acres / 70,619 total)

* According to 2000 census data on group quarters, 2,080 residents are college students living in dormitories. The college is located inside the Pinelands boundary.



**Building Permits
1980 - 2009**



Preserv	Forest	Ag Prod	Special Ag Prod	Rural Dev	Regional Growth	Pine Town	Pine Village	Military & Federal	
11%	11%	14%		36%	12%	9%	3%	3%	
				Municipal Value	South Jersey Municipal Avg	South Jersey Municipal Rank			
Population Estimate 2009				36,578	11,978	17			
Population Density 2009 (per sq mile)				404.2	2,020.5	150			
Population Change 1999 – 2009				19.0%	7.0%	26			
Land Area (sq miles) 2000				89.0	17.8	6			
% Land State-Owned Open Space 2009				4.1%	8.4%	62			
Assessed Acres of Farmland 2008				2,824	2,303	54			
Building Permits 2009				35	22	40			
Residential Housing Transactions 2009				203	25.6	22			
Median Sale Price of Homes 2009				\$209,323	\$226,800	118			
Equalized Value of Property 2009(Million\$)				\$3,614.9	\$1,685.5	27			
Effective Tax Rate 2009				1.84	2.02	127			
Average Residential Property Tax Bill 2009				\$4,268	\$5,195.5	138			
Per Capita Income 2000 (in 2000 Dollars)				\$21,048	\$23,813	124			
Unemployment Rate 2009				10.7%	10.0	74			
Establishments 2002	Agric	Mining	Constru	Manufac	Wholsal & Retail	Utils & Trans	Services	Public	UnClass
378	1%	<1%	12%	2%	15%	3%	63%	4%	1%
Assessment Class Proportions in Municipal Valuations 2006			Vacant	Residential	Agricultural	Commercial	Industrial	Apartment	
			4%	83%	1%	10%	<1%	2%	

* The non-institutionalized group quarters population (students) increased by 193 between 1990 and 2000. The non-group quarters population increased by 7,726.