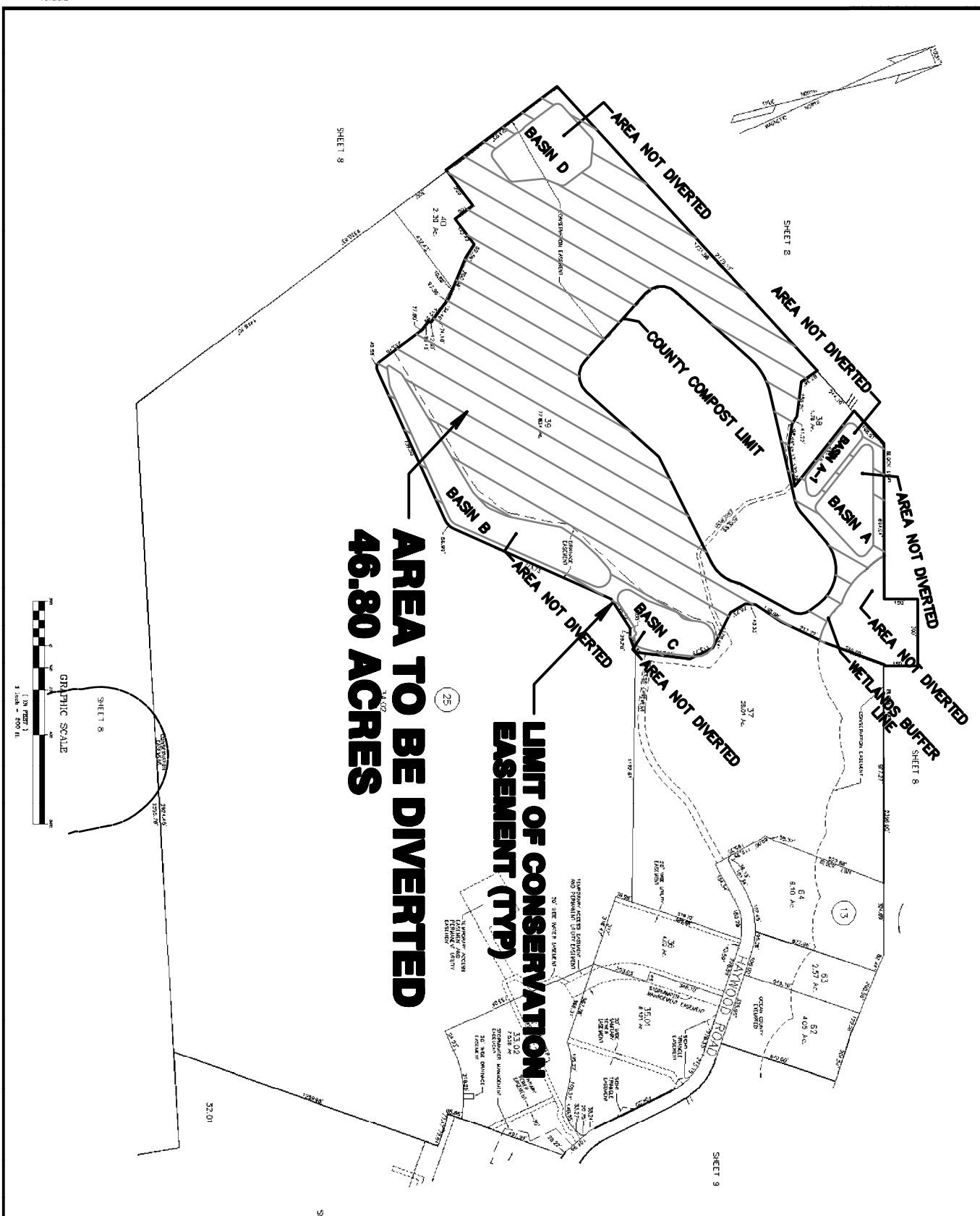
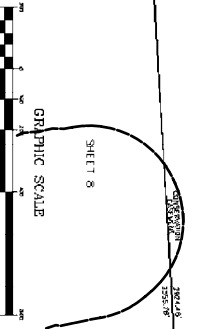


NOV 2009 9.60 AC LOTS 20, 21, 22 & 23 BLDG 25
 NEW LOTS 20, 21, 22, 23 & 24 BLDG 25
 SEP 2008 LOT 25 BLDG 13 REVERSE TO Q.C. EXEMPTED
 MAY 2007 LOTS 22 & 23 BLDG 25 REVERSE TO Q.C. EXEMPTED
 AUG 2007 REVERSE LINE BLDG 25 BETWEEN LOTS 22 & 23
 DEC 2004 SUBDIVISION BUSINESS PLAN
 DEC 2002 ADD BLDG 25 LOT 20
 JAN 1995 ADD 84.5 LOTS 19 & 21 5.02 & 19.03 BLDG 25 07
 LOT 21-05 BLDG 25
 JAN 1991 ASSESS LOTS 82-88 BLDG 12, LOTS 1-10 BLDG 36 03 & REVISIONS



**AREA TO BE DIVERTED
 46.80 ACRES**

**LIMIT OF CONSERVATION
 EASEMENT (TYP)**



TAX MAP
 STAFFORD TOWNSHIP
 OCEAN COUNTY, NEW JERSEY
 THOMAS CRADER, P.L.S. 21782
 SCHORR DEPALMA
 118 MAP HAS BEEN EXAMINED AND APPROVED FOR THE BOARD OF SUPERVISORS (C-10) AND COMMISSIONER (C-1000)