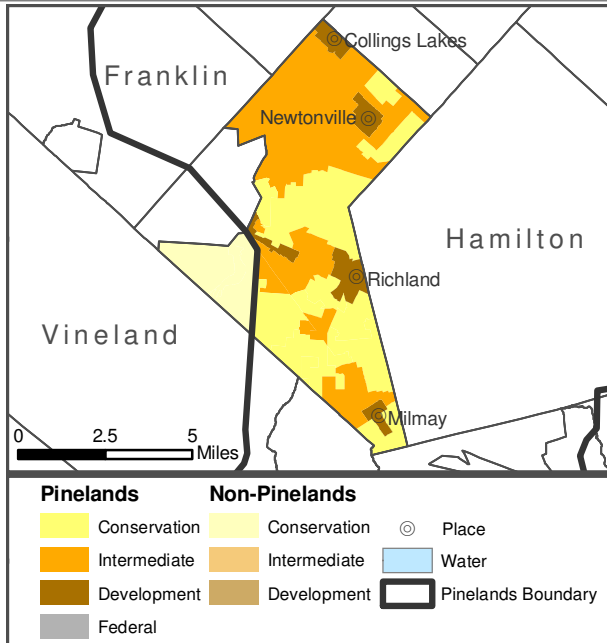


Buena Vista Township, Atlantic County

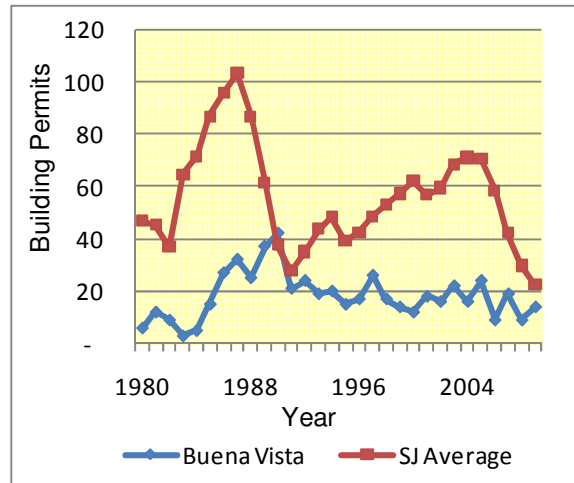
% Population in Pinelands Area: 84% (6,248 residents / 7,436 total)

% of Housing Units in Pinelands Area: 79% (2,246 units / 2,827 total)

% Land in Pinelands Area: 90% (26,598 acres / 23,954 total)



**Building Permits
1980 - 2009**



Preserv	Forest	Ag Prod	Special Ag Prod	Rural Dev	Regional Growth	Pine Town	Pine Village	Military & Federal	
	31%	12%		48%		1%	7%		
				Municipal Value	South Jersey Municipal Avg	South Jersey Municipal Rank			
Population Estimate 2009				7,360	11,978	93			
Population Density 2009 (per sq mile)				177.9	2,020.5	171			
Population Change 1999 - 2009				-1.0%	7.0%	146			
Land Area (sq miles) 2000				41.0	17.8	33			
% Land State-Owned Open Space 2009				5.3%	8.4%	57			
Assessed Acres of Farmland 2008				3,999	2,303	48			
Building Permits 2009				14	22	62			
Residential Housing Transactions 2009				26	25.6	131			
Median Sale Price of Homes 2009				\$190,972	\$226,800	133			
Equalized Value of Property 2009(Million\$)				\$637.3	\$1,685.5	110			
Effective Tax Rate 2009				1.82	2.02	129			
Average Residential Property Tax Bill 2009				\$3,952	\$5,195.5	159			
Per Capita Income 2000 (in 2000 Dollars)				\$18,382	\$23,813	168			
Unemployment Rate 2009				10.3%	10.0	85			
Establishments 2002	Agric	Mining	Constru	Manufac	Wholsal & Retail	Utils & Trans	Services	Public	UnClass
76	11%		18%	7%	14%	7%	37%	7%	
Assessment Class Proportions in Municipal Valuations 2006			Vacant	Residential	Agricultural	Commercial	Industrial	Apartment	
			7%	79%	4%	8%	2%		